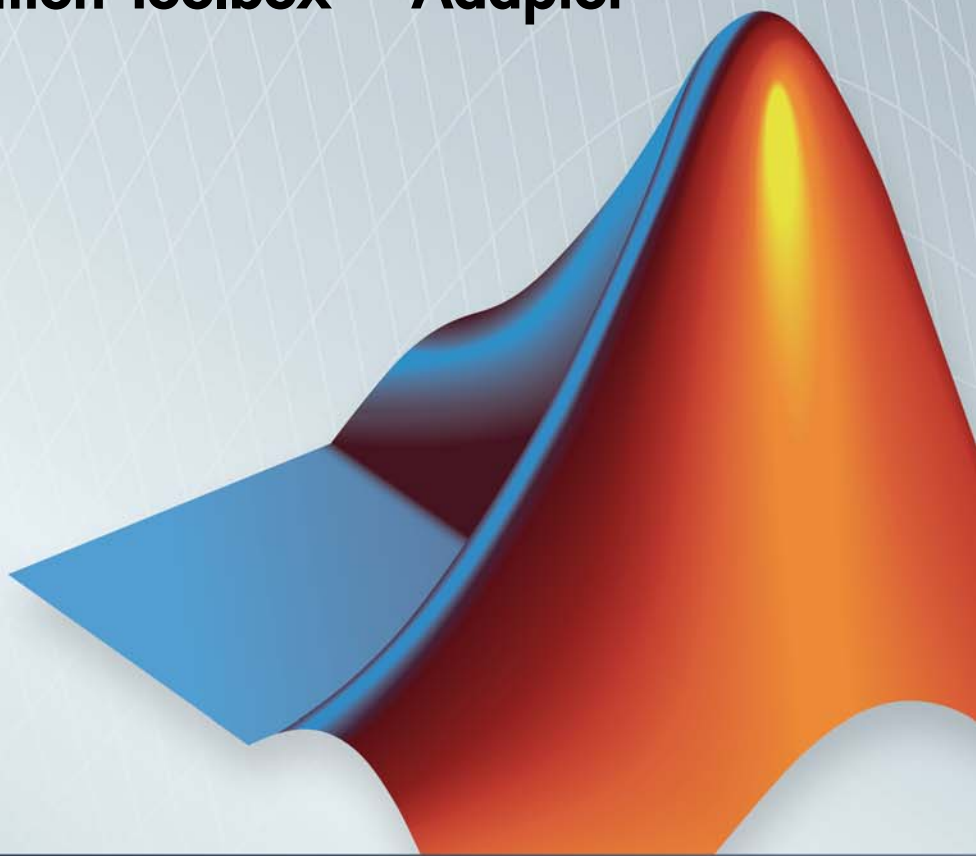


# Image Acquisition Toolbox™ Adaptor Kit

User's Guide

R2013b



# MATLAB®



## How to Contact MathWorks



[www.mathworks.com](http://www.mathworks.com)  
[comp.soft-sys.matlab](mailto:comp.soft-sys.matlab)  
[www.mathworks.com/contact\\_TS.html](http://www.mathworks.com/contact_TS.html)

Web  
Newsgroup  
Technical Support



[suggest@mathworks.com](mailto:suggest@mathworks.com)  
[bugs@mathworks.com](mailto:bugs@mathworks.com)  
[doc@mathworks.com](mailto:doc@mathworks.com)  
[service@mathworks.com](mailto:service@mathworks.com)  
[info@mathworks.com](mailto:info@mathworks.com)

Product enhancement suggestions  
Bug reports  
Documentation error reports  
Order status, license renewals, passcodes  
Sales, pricing, and general information



508-647-7000 (Phone)



508-647-7001 (Fax)



The MathWorks, Inc.  
3 Apple Hill Drive  
Natick, MA 01760-2098

For contact information about worldwide offices, see the MathWorks Web site.

*Image Acquisition Toolbox™ Adaptor Kit User's Guide*

© COPYRIGHT 2005–2013 by The MathWorks, Inc.

The software described in this document is furnished under a license agreement. The software may be used or copied only under the terms of the license agreement. No part of this manual may be photocopied or reproduced in any form without prior written consent from The MathWorks, Inc.

FEDERAL ACQUISITION: This provision applies to all acquisitions of the Program and Documentation by, for, or through the federal government of the United States. By accepting delivery of the Program or Documentation, the government hereby agrees that this software or documentation qualifies as commercial computer software or commercial computer software documentation as such terms are used or defined in FAR 12.212, DFARS Part 227.72, and DFARS 252.227-7014. Accordingly, the terms and conditions of this Agreement and only those rights specified in this Agreement, shall pertain to and govern the use, modification, reproduction, release, performance, display, and disclosure of the Program and Documentation by the federal government (or other entity acquiring for or through the federal government) and shall supersede any conflicting contractual terms or conditions. If this License fails to meet the government's needs or is inconsistent in any respect with federal procurement law, the government agrees to return the Program and Documentation, unused, to The MathWorks, Inc.

### Trademarks

MATLAB and Simulink are registered trademarks of The MathWorks, Inc. See [www.mathworks.com/trademarks](http://www.mathworks.com/trademarks) for a list of additional trademarks. Other product or brand names may be trademarks or registered trademarks of their respective holders.

### Patents

MathWorks products are protected by one or more U.S. patents. Please see [www.mathworks.com/patents](http://www.mathworks.com/patents) for more information.

## Revision History

September 2005	PDF only
March 2007	PDF only
September 2007	PDF only
March 2008	PDF only
October 2008	PDF only
March 2009	PDF only
September 2009	PDF only
March 2010	PDF only
September 2010	PDF only
April 2011	PDF only
September 2011	PDF only
March 2012	PDF only
September 2012	PDF only
March 2013	PDF only
September 2013	PDF only

New for Version 1.0 (Release 14SP3)
Revised for Version 1.0 (Release 2007a)
Revised for Version 1.0 (Release 2007b)
Revised for Version 1.0 (Release 2008a)
Minor Revision for Version 1.0 (Release 2008b)
Minor Revision for Version 1.0 (Release 2009a)
Minor Revision for Version 1.0 (Release 2009b)
Minor Revision for Version 1.0 (Release 2010a)
Minor Revision for Version 1.0 (Release 2010b)
Minor Revision for Version 1.0 (Release 2011a)
Minor Revision for Version 1.0 (Release 2011b)
Minor Revision for Version 1.0 (Release 2012a)
Minor Revision for Version 1.0 (Release 2012b)
Minor Revision for Version 1.0 (Release 2013a)
Minor Revision for Version 1.0 (Release 2013b)



## Getting Started

### 1

<b>Custom Adaptors</b> .....	1-2
What Knowledge Is Required? .....	1-3
<b>Creating an Adaptor</b> .....	1-4
Staged Development Model .....	1-4
<b>Looking at the Demo Adaptor</b> .....	1-7
Finding the Demo Adaptor Source Files .....	1-7
Viewing the Demo Adaptor Source Files .....	1-8
Setting Breakpoints .....	1-10
Building the Demo Adaptor .....	1-10
Registering an Adaptor with the Toolbox .....	1-11
Running the Demo Adaptor .....	1-11

## Setting Up Your Build Environment

### 2

<b>Setting up a Build Environment on Windows</b>	
<b>Systems</b> .....	2-2
Required Header Files and Libraries .....	2-2
Using Environment Variables .....	2-3
Creating an Adaptor Project Using Microsoft Visual C++ .....	2-4
Specifying Header File Locations .....	2-8
Specifying Libraries and Library Paths .....	2-10
Configuring Other Project Parameters .....	2-14
<b>Setting up a Build Environment on Linux and Macintosh Systems</b> .....	2-19
Required Libraries and Include Files for Adaptor Development .....	2-19

Creating a Makefile Based on the Demo Adaptor	
Makefile .....	2-20

## Providing Hardware Information

# 3

<b>Using Adaptor Exported Functions</b> .....	3-2
<b>Creating a Stub Adaptor</b> .....	3-4
<b>Performing Adaptor and Device SDK Initialization</b> ...	3-7
Example .....	3-7
<b>Specifying Device and Format Information</b> .....	3-8
Using Objects to Store Device and Format Information ...	3-8
Suggested Algorithm .....	3-10
Storing Device Information .....	3-11
Storing Format Information .....	3-12
Example: Providing Device and Format Information .....	3-14
<b>Defining Classes to Hold Device-Specific</b>	
<b>Information</b> .....	3-17
Defining a Device or Format Information Class .....	3-17
Storing Adaptor Data .....	3-17
<b>Unloading Your Adaptor DLL</b> .....	3-19
Example .....	3-19
<b>Returning Warnings and Errors to the MATLAB</b>	
<b>Command Line</b> .....	3-20

## Defining Your Adaptor Class

# 4

<b>Defining Your Adaptor Class</b> .....	4-2
<b>Using IAdaptor Abstract Class Virtual Functions</b> .....	4-4
<b>Creating Stub Implementation of Your Adaptor Class</b> .....	4-6
<b>Identifying Video Sources</b> .....	4-11
Suggested Algorithm .....	4-11
<b>Instantiating an Adaptor Object</b> .....	4-13
Suggested Algorithm .....	4-13
Implementing Your Adaptor Class Constructor .....	4-14
Implementing Your Adaptor Class Destructor .....	4-15

## Acquiring Image Data

# 5

<b>Acquiring Image Data</b> .....	5-2
User Scenario .....	5-2
Triggering .....	5-2
Overview of Virtual Functions Used to Acquire Data .....	5-3
<b>Specifying the Format of the Image Data</b> .....	5-6
Specifying Image Dimensions .....	5-6
Specifying Frame Type .....	5-8
<b>Opening and Closing Connection with a Device</b> .....	5-11
Suggested Algorithm for openDevice() .....	5-11
Suggested Algorithm for closeDevice() .....	5-14
<b>Starting and Stopping Image Acquisition</b> .....	5-16
Suggested Algorithm for startCapture() .....	5-16

Suggested Algorithm for stopCapture() .....	5-18
<b>Implementing the Acquisition Thread Function .....</b>	<b>5-20</b>
User Scenario .....	5-20
Suggested Algorithm .....	5-20
Example .....	5-24
<b>Supporting ROIs .....</b>	<b>5-27</b>
Implementing Software ROI .....	5-27
Implementing Hardware ROI .....	5-29
<b>Supporting Hardware Triggers .....</b>	<b>5-30</b>
Example .....	5-31
<b>Using Critical Sections .....</b>	<b>5-33</b>
Understanding Critical Sections .....	5-33
Example: Using a Critical Section .....	5-34
<b>Specifying Device Driver Identification Information ..</b>	<b>5-37</b>
User Scenario .....	5-37
Example .....	5-37

## Defining Device-Specific Properties

# 6

<b>Defining Device-Specific Properties .....</b>	<b>6-2</b>
User Scenario .....	6-2
Suggested Algorithm .....	6-3
<b>Creating Device Properties .....</b>	<b>6-6</b>
Selecting the Property Creation Function .....	6-6
Creating Property Help .....	6-7
Example getDeviceAttributes() Function .....	6-7
<b>Defining Hardware Trigger Configurations .....</b>	<b>6-10</b>



<b>Implementing Get and Set Support for Device-Specific Properties</b> .....	<b>6-11</b>
Setting Up Get Listeners in Your Adaptor .....	<b>6-11</b>
Setting Up Set Listeners in Your Adaptor .....	<b>6-16</b>

## Storing Adaptor Information in an IMDF File

# 7

<b>Using the IMDF Markup Language</b> .....	<b>7-2</b>
User Scenario .....	<b>7-2</b>
Elements of the IMDF Markup Language .....	<b>7-2</b>
 <b>Creating an IMDF File: Toplevel Elements</b> .....	<b>7-4</b>
 <b>Specifying Help in an IMDF File</b> .....	<b>7-6</b>
User Scenario: Viewing Property Help .....	<b>7-7</b>
Creating AdaptorHelp Nodes .....	<b>7-9</b>
 <b>Specifying Device Information</b> .....	<b>7-12</b>
Example: Device Node .....	<b>7-13</b>
 <b>Specifying Property Information</b> .....	<b>7-15</b>
Specifying Property Element Attributes .....	<b>7-16</b>
 <b>Specifying Format Information</b> .....	<b>7-19</b>
 <b>Specifying Hardware Trigger Information</b> .....	<b>7-21</b>
Specifying Trigger Sources .....	<b>7-22</b>
Specifying Trigger Conditions .....	<b>7-22</b>
 <b>Specifying Video Sources</b> .....	<b>7-24</b>
 <b>Defining and Including Sections</b> .....	<b>7-25</b>

<b>Testing Adaptors or Hardware</b> .....	<b>8-2</b>
<b>Creating a Stub Adaptor Test Procedure</b> .....	<b>8-3</b>
<b>Specifying Format of Image Data Test Procedure</b> .....	<b>8-7</b>
<b>Implementing the Acquisition Thread Function Test Procedure</b> .....	<b>8-8</b>
<b>Supporting ROIs Test Procedure</b> .....	<b>8-9</b>
<b>Specifying Device Driver Identification Information Test Procedure</b> .....	<b>8-10</b>
<b>Using the Test Suite Functions and Properties</b> .....	<b>8-13</b>
Test Suite Properties .....	<b>8-13</b>
Test Suite Functions .....	<b>8-14</b>
Test Suite Example .....	<b>8-19</b>

# Getting Started

---

This section introduces the Image Acquisition Toolbox™ Adaptor Kit.

- “Custom Adaptors” on page 1-2
- “Creating an Adaptor” on page 1-4
- “Looking at the Demo Adaptor” on page 1-7

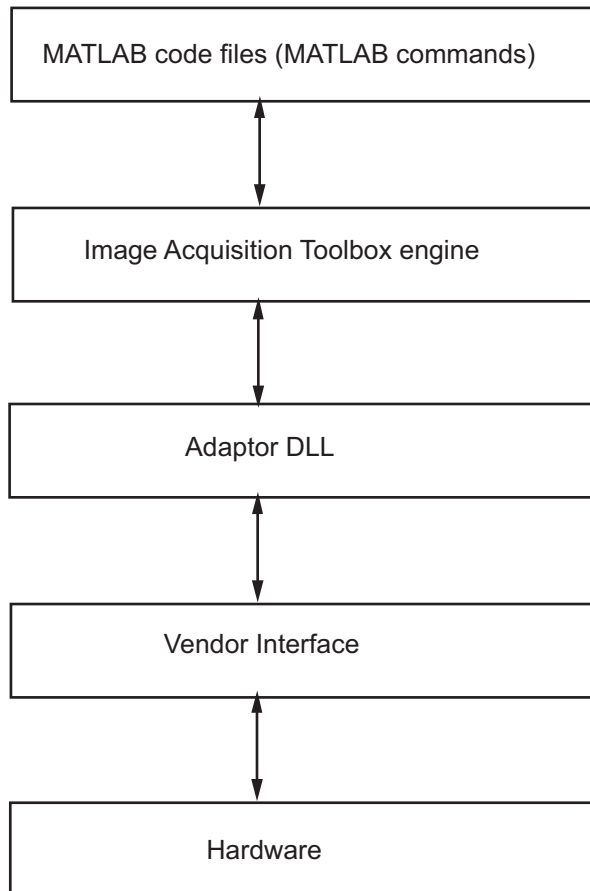
## Custom Adaptors

The Image Acquisition Toolbox Adaptor Kit is a C++ framework that you can use to create an adaptor. A C++ framework is a set of classes that work together to create a particular application. In a framework, the design of the software is already defined. With the adaptor framework, you subclass the framework classes and implement the required member functions to flesh out the design to support your particular hardware.

An adaptor is a dynamic link library (DLL), called a shared library on Linux systems, that implements the connection between the Image Acquisition Toolbox engine and a device driver via the vendor's software development kit (SDK).

You develop an adaptor to support new hardware. Adaptors enable the dynamic loading of support for hardware without requiring recompilation and linking of the toolbox. Using an adaptor to add hardware support gives you the advantage of having multiple prepackaged features such as data logging, triggering, and a standardized interface to the image acquisition device.

This diagram shows the relationship of an adaptor to the toolbox engine and a device driver.



**Relationship of Adaptor to Toolbox Components**

## **What Knowledge Is Required?**

To build an adaptor, you should have a working knowledge of

- C++
- The functionality of your hardware device, and its associated application programming interface (API)
- Image Acquisition Toolbox concepts, functionality, and terminology as described in the Image Acquisition Toolbox User's Guide documentation

## Creating an Adaptor

To create an adaptor, you must implement the C++ routines and the classes required by the adaptor framework. The following outlines one way to develop an adaptor that divides the task into several smaller tasks, called stages. This staged development model has been shown to be an effective way to create an adaptor.

- “Stage 1: Familiarize Yourself with the Adaptor Kit and Device SDK” on page 1-4
- “Stage 2: Set Up Your Build Environment” on page 1-5
- “Stage 3: Provide Hardware Information” on page 1-5
- “Stage 4: Define Your Adaptor Class” on page 1-5
- “Stage 5: Implement Virtual Functions in Adaptor Class” on page 1-5
- “Stage 6: Choose Which Device Properties to Expose” on page 1-6

### Staged Development Model

#### **Stage 1: Familiarize Yourself with the Adaptor Kit and Device SDK**

Before you start developing an adaptor, you must gather information about the device (or devices) to help you make design decisions.

- Familiarize yourself with adaptors and adaptor development by looking at the demo adaptor which is included with the adaptor kit — see “Looking at the Demo Adaptor” on page 1-7
- Familiarize yourself with your device’s SDK. Devices provide the tools you need to access and control them programmatically. You must learn your device’s requirements for initialization, startup, and acquiring data, and the SDK functions used to perform these tasks.
- Determine what device or devices you want to support with your adaptor. You can create an adaptor to support one particular device, a group of devices offered by a particular vendor, or a group of devices that all support a common interface. You must also determine the formats supported by the

device and the properties of the device that you want to make available to users of your adaptor.

## **Stage 2: Set Up Your Build Environment**

You must set up the required adaptor build environment, which includes specifying the names and locations of required header files and libraries. “Setting up a Build Environment on Windows Systems” on page 2-2 provides this information.

## **Stage 3: Provide Hardware Information**

In this stage, you start development by creating a stub implementation of your adaptor. Every adaptor must provide the toolbox with information about the device (or devices) it makes available to users. As a first step, you define the labels you want to use to identify the devices available through your adaptor and the formats they support, and you implement the adaptor functions that return this information to users. The toolbox displays these labels to users who must specify the device and format they want to use for an acquisition.

After building this stub implementation of your adaptor DLL and registering it with the toolbox, you can use the `imaqhwinfo` function and verify that the toolbox can find your adaptor and load it. For more information about this stage, see “Using Adaptor Exported Functions” on page 3-2.

## **Stage 4: Define Your Adaptor Class**

In this stage, you define your adaptor class and add a stub implementation of this class to your adaptor project. Every adaptor must define an adaptor class that is a subclass of the adaptor kit `IAdaptor` class.

After building your adaptor DLL, a call to the `videoinput` function instantiates a video input object with your adaptor. For more information, see “Defining Your Adaptor Class” on page 4-2.

## **Stage 5: Implement Virtual Functions in Adaptor Class**

In this stage, you flesh out the stub implementations of the virtual functions in your adaptor class. After completing this stage, you will be able to acquire data from your device and bring it into the MATLAB® workspace.

In addition, in this step you can also implement support for defining a region-of-interest (ROI) and for using hardware triggering, if your device supports this capability. For more information, see “Acquiring Image Data” on page 5-2.

## **Stage 6: Choose Which Device Properties to Expose**

In this stage, you decide which properties of the device you want to expose to toolbox users. You make this determination by reading the device’s SDK documentation, determining its capabilities, and deciding which capabilities toolbox users will expect to configure. Once you decide to expose a property, you must decide on a name for the property, determine its data type, and, optionally, the range of valid values. As an alternative, you can define device-specific properties in an image device definition file (IMDF). For more information, see “Defining Device-Specific Properties” on page 6-2.



## Looking at the Demo Adaptor

A good way to get a quick introduction to adaptors and adaptor development is by looking at the demo adaptor that is included with the Image Acquisition Toolbox Adaptor Kit. The demo adaptor is a functioning adaptor that does not require any hardware. You can build the demo adaptor and run it to get familiar with how an adaptor works.

- “Finding the Demo Adaptor Source Files” on page 1-7
- “Viewing the Demo Adaptor Source Files” on page 1-8
- “Setting Breakpoints” on page 1-10
- “Building the Demo Adaptor” on page 1-10
- “Registering an Adaptor with the Toolbox” on page 1-11
- “Running the Demo Adaptor” on page 1-11

### Finding the Demo Adaptor Source Files

The demo adaptor C++ source files reside in the following folder:

```
$MATLAB\toolbox\imaq\imaqadaptors\kit\demo\
```

The following table lists all the files in the demo folder in alphabetical order, with brief descriptions.

Source File	Description
DemoAdaptor.cpp	Demo adaptor class implementation
DemoAdaptor.h	Demo adaptor class definition
DemoDeviceFormat.cpp	Implementation of class that holds device format information
DemoDeviceFormat.h	Definition of class that holds device format information
DemoPropListener.cpp	Implementation of class that notifies demo adaptor when the value of a device property changes

<b>Source File</b>	<b>Description</b>
DemoPropListener.h	Definition of class that notifies demo adaptor when the value of a device property changes
DemoSourceListener.cpp	Implementation of class that listens for changes in the selected video source
DemoSourceListener.h	Definition of class used to listen for changes in the selected video source
DemoTimestampGetFcn.cpp	Implementation of class that provides a custom <code>get</code> function for the timestamp properties.
DemoTimestampGetFcn.h	Definition of class that provides a custom <code>get</code> function for the timestamp properties.
mwdemoimaq.cpp	Implementation of the five functions that every adaptor must export.
mwdemoimaq.dll	Demo adaptor library. This is the compiled and linked Dynamic Link Library (DLL) that implements the demo adaptor.
mwdemoimaq.h	Header file that defines the five functions that every adaptor must export
mwdemoimaq.imdf	Demo adaptor image device file (IMDF) that contains property definitions
mwdemoimaq.vcproj	Microsoft® Visual C++® project file for the demo adaptor

## Viewing the Demo Adaptor Source Files

This section describes a suggested order in which you should look at the demo adaptor source files.

### **mwdemoimaq.h**

A good place to start looking at the demo adaptor is to open the `mwdemoimaq.h` file. This file defines the five functions that every adaptor must export. The toolbox engine calls these functions to get information about supported

hardware, instantiate a video input object, and acquire data. Implementing these functions is typically the first step an adaptor writer takes. This header file contains comments that explain the purpose of each function.

### **mwdemoimaq.cpp**

After seeing the definition of the adaptor exported functions, see how they are implemented in the corresponding C++ implementation file, `mwdemoimaq.cpp`.

### **DemoAdaptor.h**

After viewing the exported functions, take a look at the definition of the `DemoAdaptor` class in `DemoAdaptor.h`. The adaptor class is a subclass of the `IAdaptor` class, which defines the virtual functions an adaptor must implement. This header file contains comments that explain the purpose of each member function.

### **DemoAdaptor.cpp**

After seeing the definition of the adaptor class, look at the implementation of the class in the `DemoAdaptor.cpp` file. This file contains the acquisition thread function which is the main frame acquisition loop. This is where the adaptor connects to the device and acquires image frames.

### **Other Demo Adaptor Files**

The demo directory contains other files that implement optional adaptor kit capabilities.

For example, the `DemoDeviceFormat.h` and corresponding `.cpp` files illustrate one way to store device-specific format information using adaptor data. You define a class that is a subclass of the `IMAQInterface` class to hold the information. See “Defining Classes to Hold Device-Specific Information” on page 3-17 for more information.

The `DemoPropListener.h` and corresponding `.cpp` files and the `DemoSourceListener.h` and `.cpp` files illustrate how your adaptor can get notified if a user changes the setting of a property. See “Implementing Get and Set Support for Device-Specific Properties” on page 6-11 for more information.

## Setting Breakpoints

You can use debugger breakpoints to examine which adaptor functions are called when users call toolbox functions, such as `imaqhwinfo`, `videoinput`, `start`, and `stop`. The following table lists places in the demo adaptor where you can set a breakpoints.

<b>MATLAB Command</b>	<b>Breakpoint</b>
<code>imaqhwinfo</code>	<code>initializeAdaptor()</code>
<code>imaqreset</code>	<code>uninitializeAdaptor()</code>
<code>imaqhwinfo(adaptorname)</code>	<code>getAvailHW()</code>
<code>videoinput</code>	<code>getDeviceAttributes()</code> <code>createInstance()</code>
<code>imaqhwinfo(obj)</code>	<code>getDriverDescription()</code> <code>getDriverVersion()</code> <code>getMaxWidth()</code> <code>getMaxHeight()</code> <code>getFrameType()</code>
<code>videoinput</code>	<code>getNumberOfBands()</code>
<code>start</code>	<code>openDevice()</code>
<code>start</code> or <code>trigger</code> , if manual trigger	<code>startCapture()</code>
<code>stop</code>	<code>stopCapture()</code> <code>closeDevice()</code>

## Building the Demo Adaptor

After familiarizing yourself with the demo adaptor source files, build the demo adaptor. There is a pre-built version of the demo adaptor in `matlabroot/toobox/imaq/imaqadaptors/kit/demo/$ARCH`. The Visual Studio project file and the makefile build the adaptor file in a subfolder of this folder.

---

**Note** To build the demo adaptor on Windows, you must have an environment variable named `MATLAB` defined on your system. Set the value of this environment variable to the location of your MATLAB installation directory.

---

## Registering an Adaptor with the Toolbox

After creating an adaptor, you must inform the Image Acquisition Toolbox software of its existence by registering it with the `imaqregister` function. This function tells the toolbox where to find third-party adaptor libraries. You only need to register your adaptor once. The toolbox stores adaptor location information in your MATLAB preferences.

---

**Note** Because the toolbox caches adaptor information, you might need to reset the toolbox, using `imaqreset`, before a newly registered adaptor appears in the `imaqhwinfo` listing.

---

For example, the following code registers the demo adaptor with the toolbox using the `imaqregister` function, where `<your_directory>` represents the name of the directory where you created the demo adaptor.

```
imaqregister('<your_directory>\mwdemoimaq.dll');
```

## Running the Demo Adaptor

Start MATLAB and call the `imaqhwinfo` function. You should be able to see the demo adaptor included in the adaptors listed in the `InstalledAdaptors` field. For example, on a Windows system, `imaqhwinfo` returns the following.

```
ans =
```

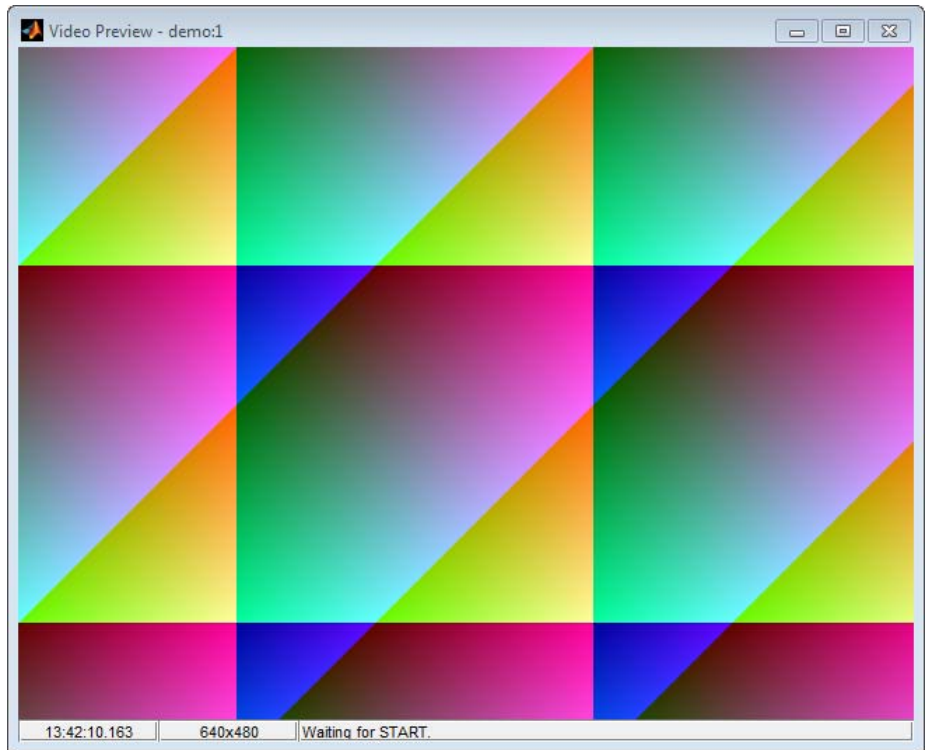
```
InstalledAdaptors: {'demo' 'matrox' 'winvideo'}  
MATLABVersion: '7.12 (R2011a)'  
ToolboxName: 'Image Acquisition Toolbox'  
ToolboxVersion: '4.1 (R2011a)'
```

Create a video input object with the demo adaptor.

```
vid = videoinput('demo');
```

Get a preview of the data being returned by the demo adaptor using the `preview` function. Note that the demo adaptor generates a grayscale pattern to mimic the data returned by a real image acquisition device. The demo adaptor does not connect to an actual device.

```
preview(vid);
```



**Preview Windows Containing Demo Adaptor Data**

# Setting Up Your Build Environment

---

This chapter describes the libraries and include files you need to build an adaptor on Windows, Linux, or Macintosh systems. The chapter also provides details about setting up the build environment in Microsoft Visual C++.

- “Setting up a Build Environment on Windows Systems” on page 2-2
- “Setting up a Build Environment on Linux and Macintosh Systems” on page 2-19

## Setting up a Build Environment on Windows Systems

Setting up the build environment involves specifying the header files and libraries that you need to create an adaptor. For those familiar with their IDE environment, see the following sections for lists of these required include files and libraries. This section also describes how to create an environment variable that you can use to specify the MATLAB installation folder. The header file and library paths use this environment variable. For detailed instructions on setting up your build environment in the Microsoft Visual C++ development environment, see “Creating an Adaptor Project Using Microsoft® Visual C++®” on page 2-4.

In this section...
“Required Header Files and Libraries” on page 2-2
“Using Environment Variables” on page 2-3
“Creating an Adaptor Project Using Microsoft® Visual C++®” on page 2-4
“Specifying Header File Locations” on page 2-8
“Specifying Libraries and Library Paths” on page 2-10
“Configuring Other Project Parameters” on page 2-14

---

**Note** Users of Microsoft Visual C++ should be aware that there are certain project parameters that they must set. See “Configuring Other Project Parameters” on page 2-14.

---

### Required Header Files and Libraries

The following table lists the locations of the header files and libraries that you need to build an adaptor.

---

**Note** You must also specify the location of the header files and libraries required by your device. Read your device’s SDK documentation to get this information.

---



Header File and Libraries	Location
Adaptor kit header files	\$(MATLAB)\toolbox\imaq\imaqadaptors\kit\include <sup>1</sup>
Image Acquisition Toolbox engine library	\$(MATLAB)\toolbox\imaq\imaqadaptors\kit\lib\<ARCH>\release\imaqmex.lib

- For information about defining environment variables, see “Using Environment Variables” on page 2-3.)
- To learn how to specify header files in Microsoft Visual C++, see “Specifying Header Files in Microsoft® Visual C++® 2010” on page 2-8.
- To learn how to specify the libraries in Microsoft Visual C++, see “Specifying Libraries and Library Paths” on page 2-10.

## Using Environment Variables

To create an environment variable on your Windows® 7 system that specifies your MATLAB installation folder, follow this procedure:

- 1 Open the System Properties dialog box. One way to do this on a Windows 7 system is to click the Start menu and then right-click the Computer option and select **Properties**.
- 2 In the System Control Panel, click the **Advanced system settings** option.
- 3 On the **Advanced** tab, click the **Environment Variables** button.
- 4 In the Environment Variables dialog box, in the **User variables** section, click **New** to create an environment variable.
- 5 In the New User Variable dialog box, assign the name **MATLAB** to the variable and set the value of the variable to your MATLAB installation folder path. Click **OK**.
- 6 Click **OK** in the Environment Variables dialog box.

1. MATLAB is an environment variable that contains the name of your MATLAB installation folder.

7 Click **OK** in the System Properties dialog box.

---

**Note** If Microsoft Visual C++ is running when you create this variable, you must restart it.

---

## Creating an Adaptor Project Using Microsoft Visual C++

As the first step toward building an adaptor, open Microsoft Visual C++ and create a new project.

---

**Note** It is strongly recommended that you use a version of Microsoft Visual Studio®. For information on supported versions, see [http://www.mathworks.com/support/compilers/current\\_release](http://www.mathworks.com/support/compilers/current_release).

---

1 Set up any required environment variables—see “Using Environment Variables” on page 2-3.

2 Start Microsoft Visual C++ 2010.

3 On the **Start Page**, click **New Project...** Visual Studio opens the New Project dialog box, shown in the following figure. You can also open this dialog box from the **File > New > Project** menu.

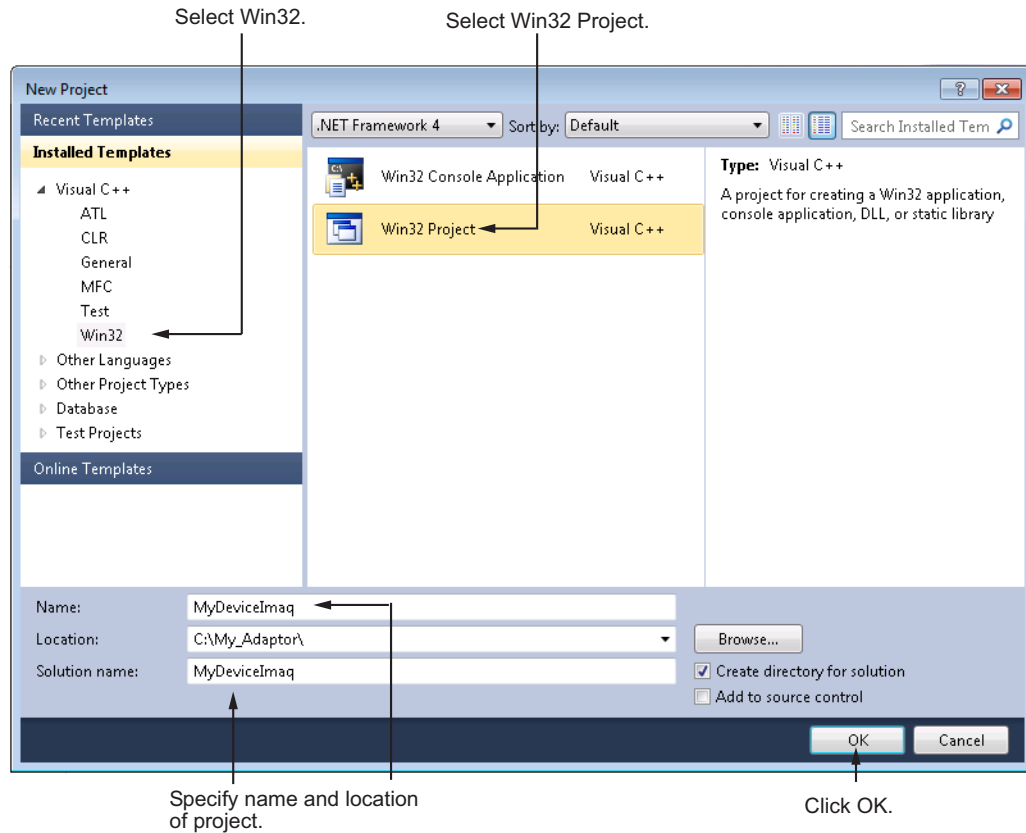
4 In the New Project dialog box:

- Expand Visual C++, under Installed Templates, if needed, and select **Win32**.
- Select **Win32 Project**.
- Enter the name you want to assign to the project in the **Name** field and specify where you want to locate the project in the **Location** field.

You can give your adaptor project any name. A convention used by the toolbox is to name adaptors as follows:

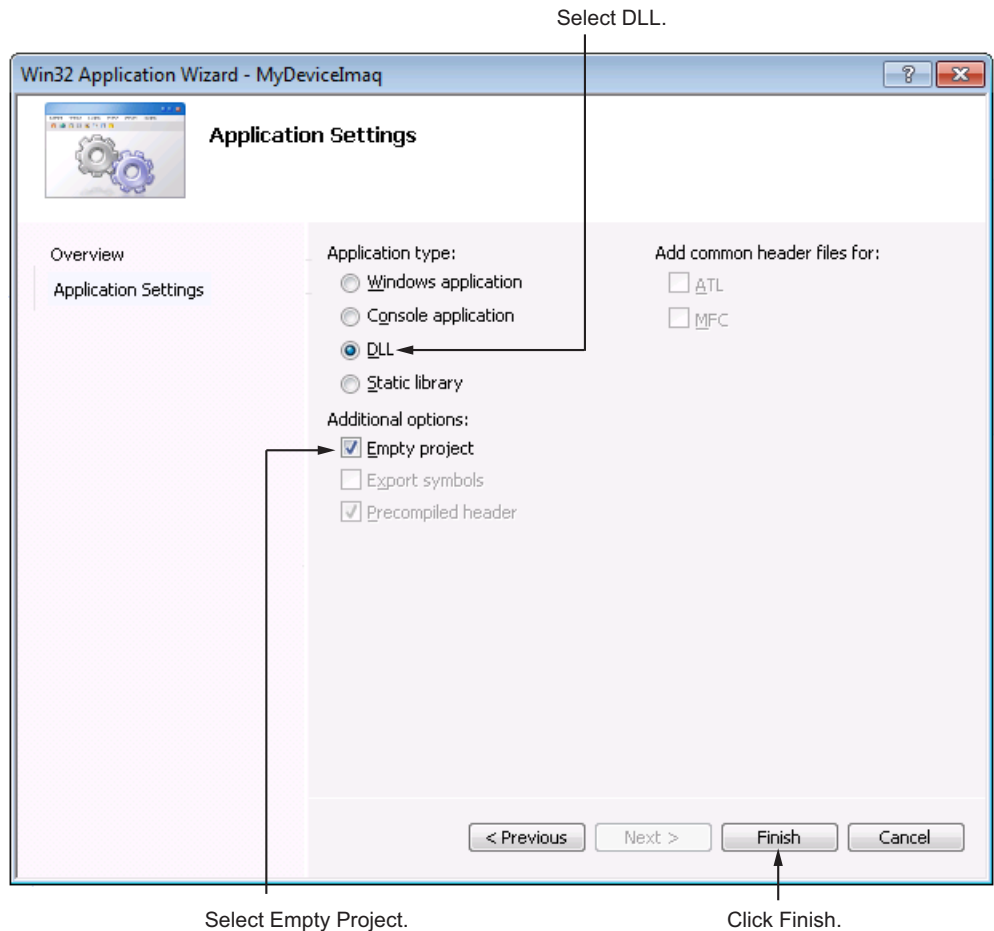
*vendor\_name* + *imaq*

where you replace the string *vendor\_name* with something appropriate to your project. For example, this documentation specifies the project name `MyDeviceImaq`. Microsoft Visual C++ uses the project name as the default adaptor DLL name. To specify a different name for the adaptor DLL, open the project property pages (**Project > Properties**), open **Linker**, click **General**, and edit the Output File field.

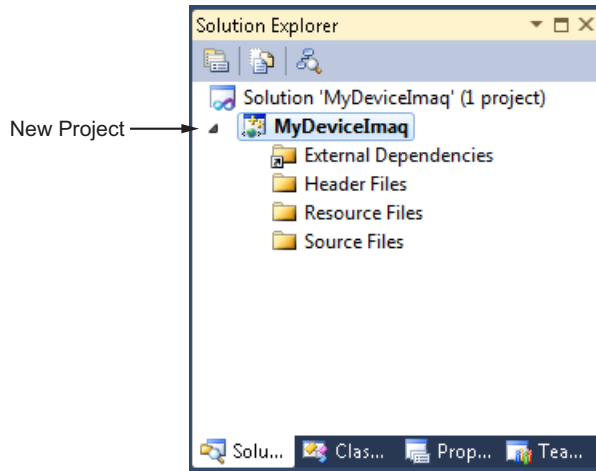


- Click **OK**. Visual C++ opens the Win32 Application Wizard.
- 5** In the Win32 Application Wizard, click **Application Settings**.

- 6 On the Application Settings page, select **DLL** from the list of application types and select **Empty project** from the Additional options section. Click **Finish** to create the project.



After you create the project, close the **Start Page**. Visual C++ displays the project in its **Solution Explorer**, with separate folders for source files, header files, and other project resources, as shown in the following figure.



## Recompiling with New Versions of the Image Acquisition Toolbox Software

After you have created an adaptor, you generally only need to recompile it for use with new major versions of the Image Acquisition Toolbox software. Adaptor writers should recompile when a major update is released, such as Image Acquisition Toolbox Version 4.0. If your adaptor works in one version but not in the new version of the toolbox, try recompiling and relinking to see if that resolves the issue.

Minor updates of the toolbox generally do not include changes to the adaptor kit, so adaptor writers generally will not need to recompile their adaptors.

## Adding the Adaptor Kit Project to Your Solution

When you create a project, Microsoft Visual C++ automatically creates a solution that contains your project. As a convenience, while you are developing your adaptor, you might want to add the adaptor kit project to your solution to make it easier to refer to adaptor kit files. Adding the adaptor kit project to your solution does not affect the compilation or linkage of your adaptor DLL.

To add the adaptor kit project to your solution, go to the **File > Add > Existing Project** menu. In the **Add Existing Project** dialog box, open the following project file,

```
matlabroot\toolbox\imaq\imaqadaptors\kit\imaqadaptorkit.vcxproj
```

where `matlabroot` represents your MATLAB installation folder.

### Specifying Header File Locations

Before you can compile your adaptor, you must specify the locations of the header files required by the adaptor kit and by your device's SDK. For a list of the header files required by the adaptor kit, see "Setting up a Build Environment on Windows Systems" on page 2-2. The following section describes how to specify these header file locations in the Microsoft Visual C++ 2010 environment.

---

**Note** The examples in the following section use environment variables. For more information, see "Using Environment Variables" on page 2-3.

---

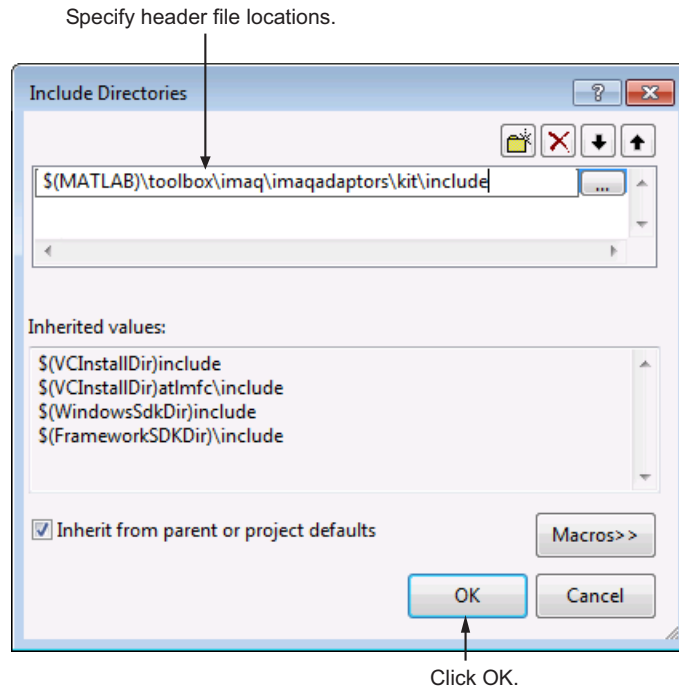
### Specifying Header Files in Microsoft Visual C++ 2010

To specify the locations of the adaptor kit header files in Microsoft Visual C++ 2010, follow these instructions:

- 1 Open the Property Pages dialog box: **Projects > Properties**.
- 2 Change the Configuration setting (at the top of the dialog box) to **All Configurations**.
- 3 Expand Configuration Properties and select **VC++ Directories**.

Then select **Include Directories** and choose **Edit** from the menu associated with that row.





5 After specifying the header file folders, click **OK**.

### Specifying Libraries and Library Paths

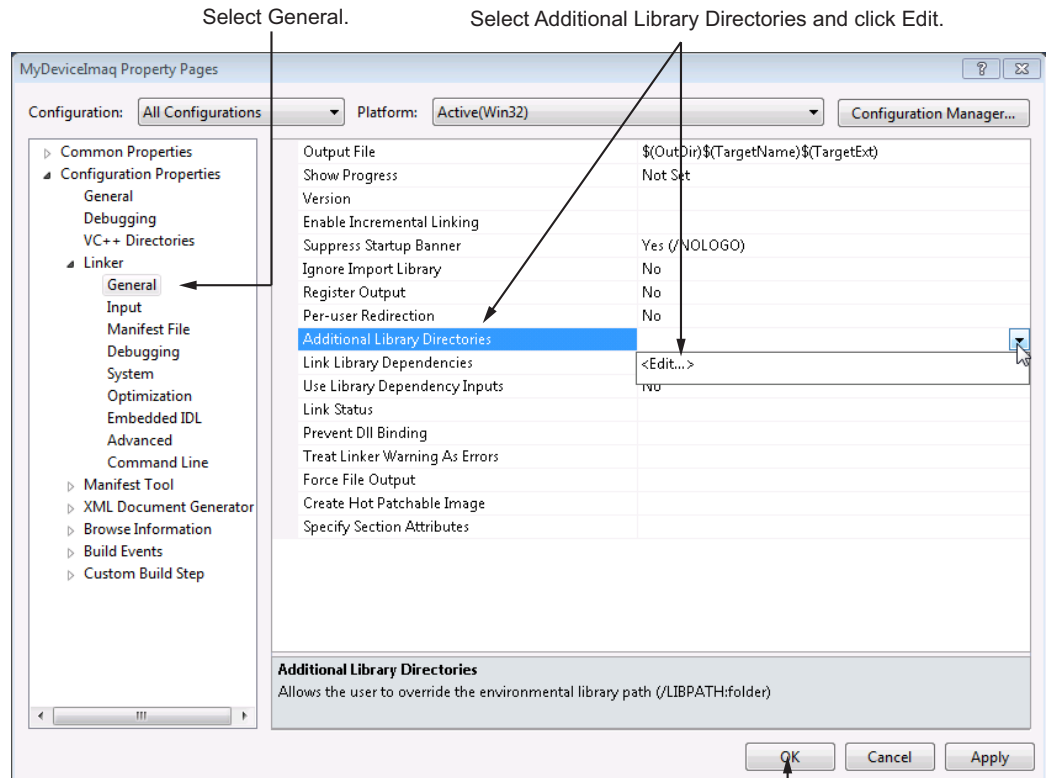
Before you can create your adaptor DLL, you must specify the libraries required by the adaptor kit and by your device's SDK. For a list of required libraries, see "Setting up a Build Environment on Windows Systems" on page 2-2. The following sections describes how to specify these libraries and library paths in Microsoft Visual C++.

### Specifying Library Locations in Microsoft Visual C++ 2010

- 1 Open the Property Pages dialog box (if it is not already open): **Projects > Properties**.
- 2 Change the Configuration setting (at the top of the dialog box) to **All Configurations**.



- 3** Expand **Configuration Properties** and then expand **Linker**. Select **General** and, on this page, select **Additional Library Directories** and click **Edit** from the menu associated with that row.



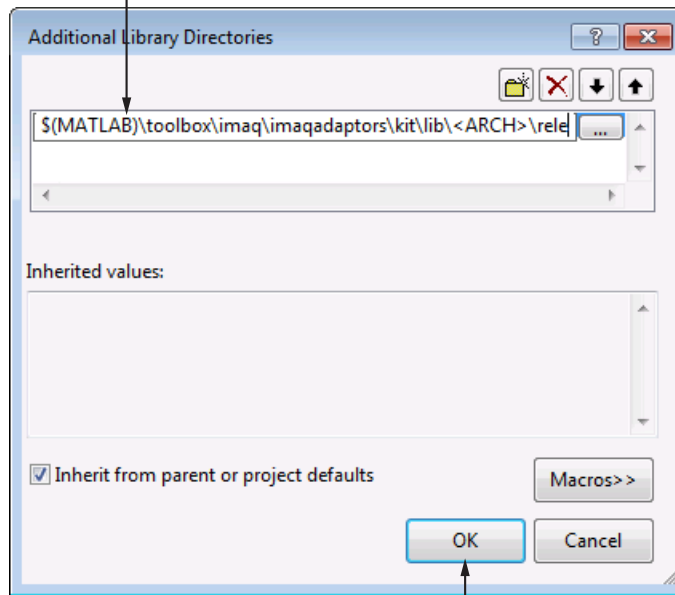
- 4** Add the locations of adaptor kit libraries and the libraries required by your device's SDK in the **Additional Library Directories** field. Use a semicolon to separate the folders.

This example adds this line to the field:

```
$(MATLAB)\toolbox\imaq\imaqadaptors\kit\lib\<ARCH>\release
```

In the example, \$(MATLAB) dereferences the environment variable MATLAB, which is set to the name of your installation folder — see “Using Environment Variables” on page 2-3. You must replace <ARCH> with the name of an architecture-specific folder, such as, win32 or win64.

Specify location of library files.

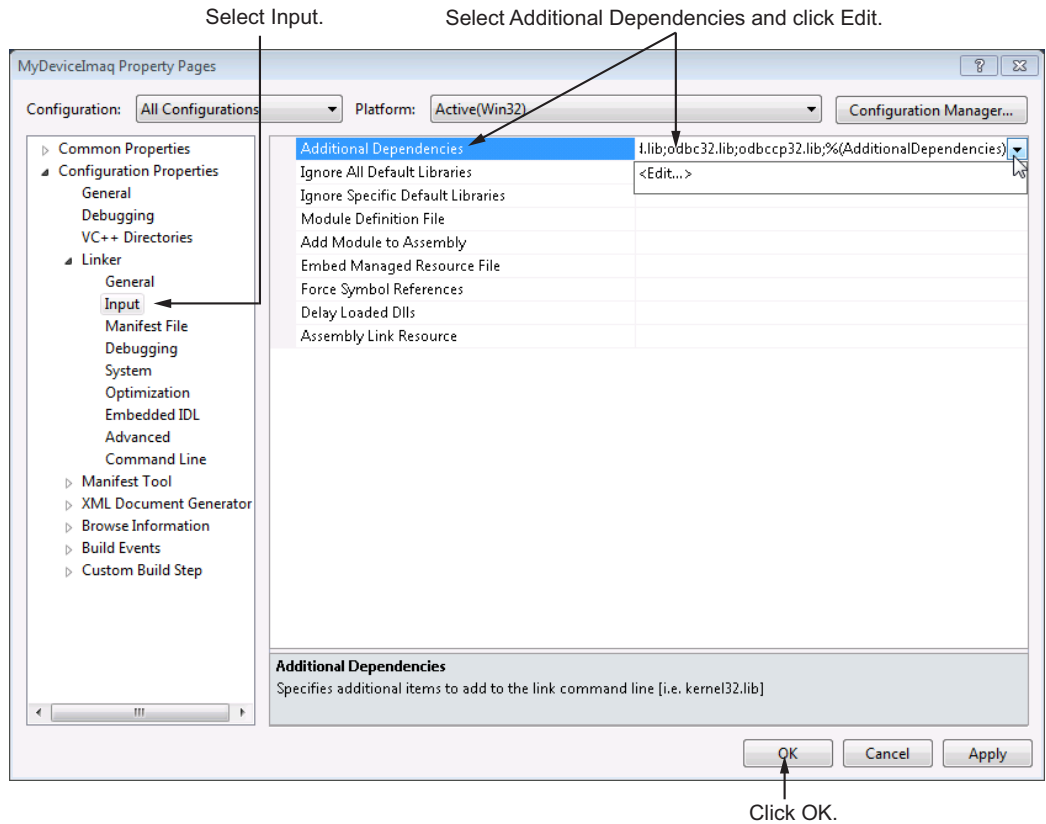


Click OK.

### Specifying Library Names in Microsoft Visual C++ 2010

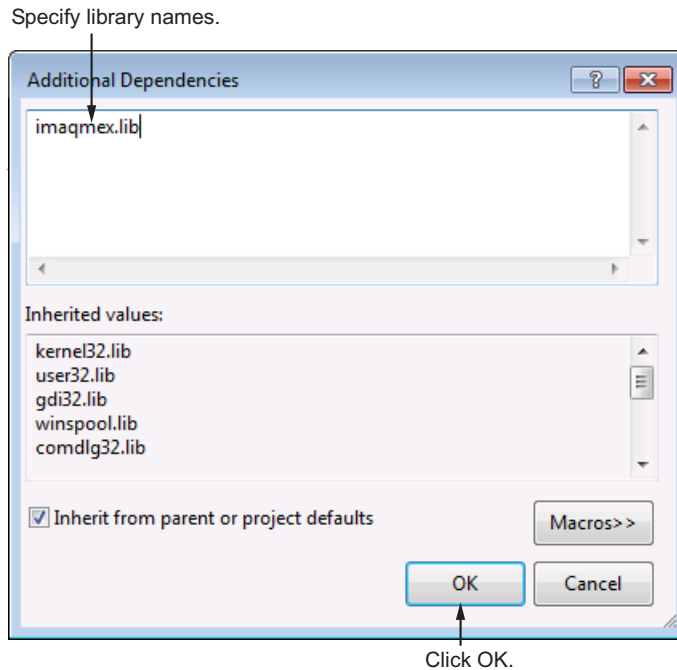
To specify the library names, follow this procedure.

- 1 Open the Property Pages dialog box (if you do not already have it open): **Projects > Properties**.
- 2 Change the Configuration setting (at the top of the dialog box) to **All Configurations**.
- 3 In the Property Pages dialog box for your project, expand **Configuration Properties** and then expand **Linker**. Select the **Input** category and, on this page, select **Additional Dependencies** and click **Edit**.



- 4** Specify the names of the adaptor kit libraries and the names of the libraries required by your device's SDK. Use spaces to separate the names of the libraries. The following shows the adaptor kit libraries.

`imaqmex.lib`



5 Click **OK**.

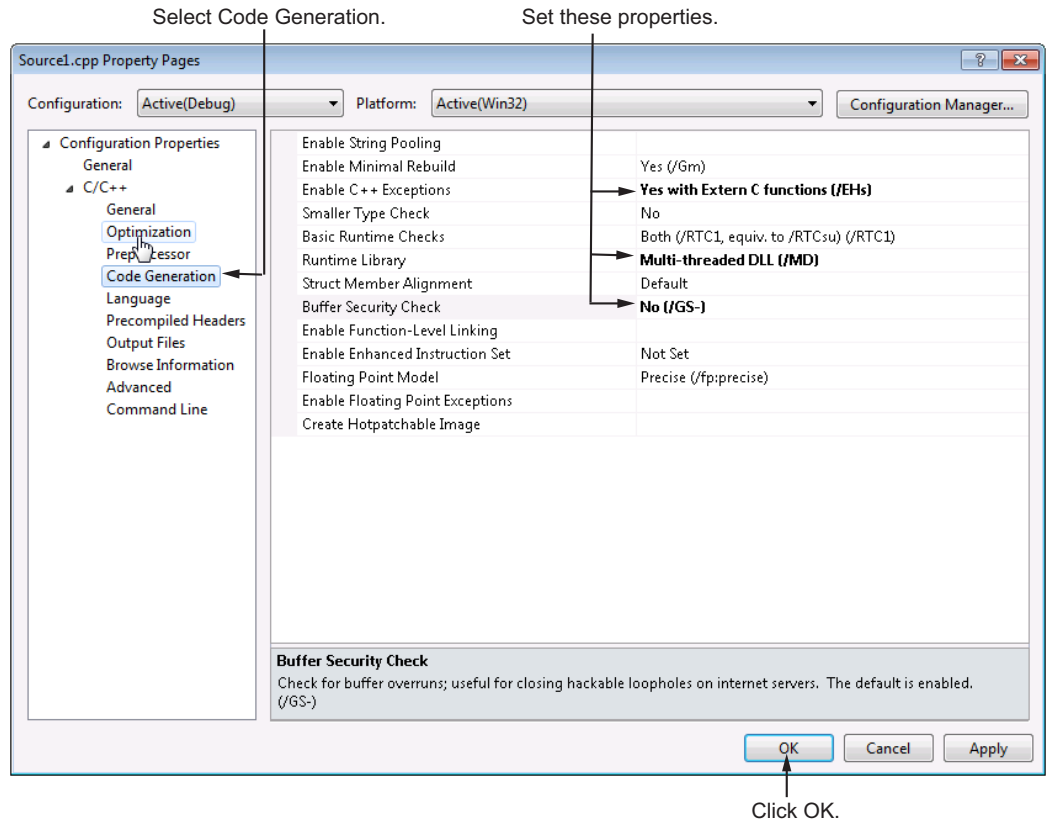
### Configuring Other Project Parameters

In addition to specifying the header files and libraries, an adaptor project requires these additional settings. If you do not set these parameters, your adaptor might encounter run-time problems.

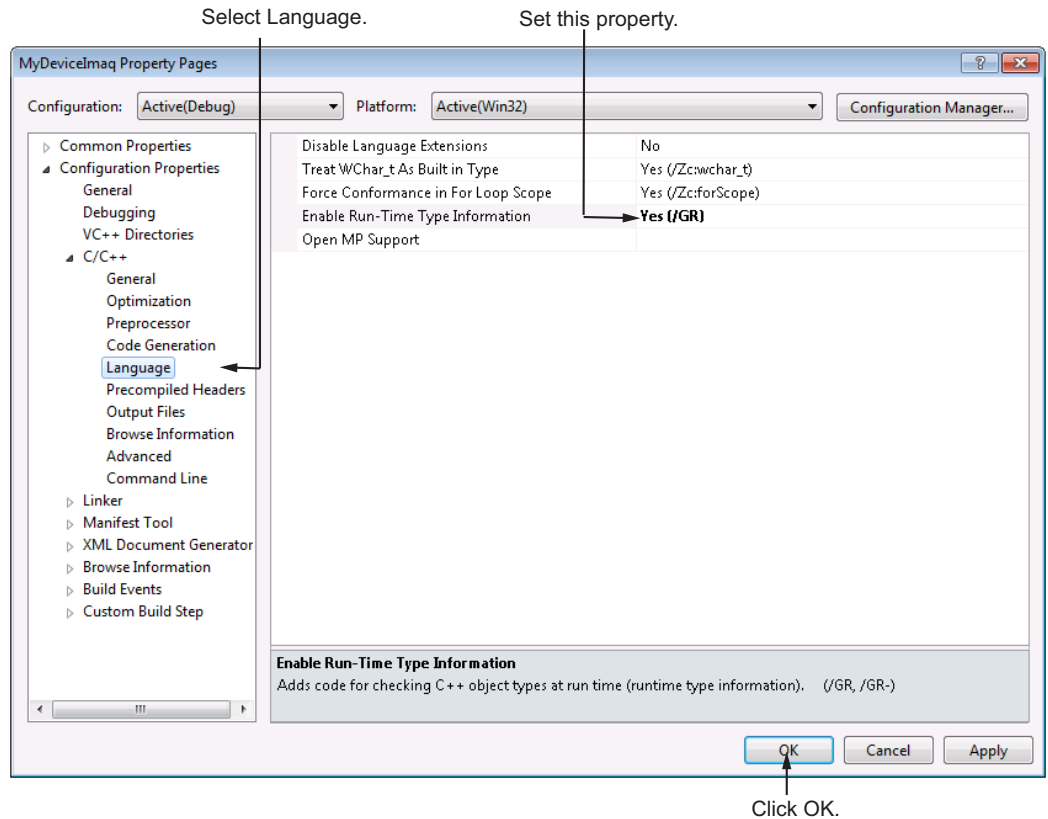
- 1 Add an empty source file to your project. To set the values of these additional properties, your project must contain files. To create a source file, follow this procedure:
  - a Select **File > New > File**.
  - b In the New File dialog box, select **Visual C++**.
  - c Select **C++ File (.cpp)** and then click **Open**.

- d** Add the new source file to your project. From the **File** menu, select **Move Source1.cpp into** and select the name of your project. Accept the default file name for now; you can always change it later.
- 2** Open the Property Pages for your project by right-clicking on your project in the Solution Explorer and choosing **Properties**, or by selecting **Properties** from the Project menu.
- 3** In the Property Pages dialog box, open **C/C++** and select **Code Generation**. On the Code Generation page, set the following values.

<b>Field</b>	<b>Setting</b>
Enable C++ Exceptions	Yes with Extern C functions (/EHs)
Runtime library	Multi-threaded DLL (/MD)
Buffer Security Check	No (/GS-)

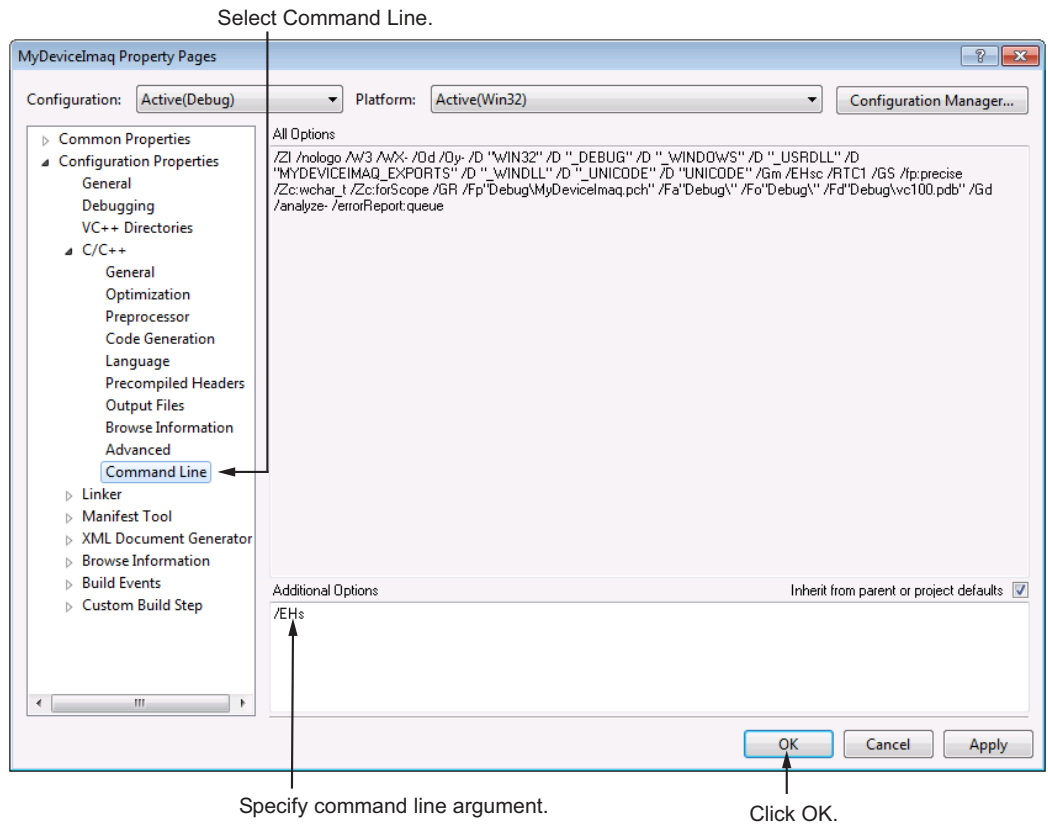


- 4 In the Property Pages dialog box, under **C/C++**, select **Language**. On the Language page, set the **Enable Run-time Type Information** field to **Yes (/GR)**.



- 5 In the Property Pages dialog box, under **C/C++**, select **Command Line** and specify the following compiler flag. Click **OK** to close the Property Pages dialog box.

/EHs





## Setting up a Build Environment on Linux and Macintosh Systems

### In this section...

“Required Libraries and Include Files for Adaptor Development” on page 2-19

“Creating a Makefile Based on the Demo Adaptor Makefile” on page 2-20

Setting up the build environment on Linux and Macintosh systems involves specifying the include file paths, library path, and libraries to link against to create an adaptor. See “Required Libraries and Include Files for Adaptor Development” on page 2-19 for a list of the files and paths you need.

The adaptor kit includes a makefile that builds the adaptor kit demo adaptor on Linux and Macintosh systems. You can use this demo makefile, with only slight modifications, to create a makefile that builds your own adaptor. See “Creating a Makefile Based on the Demo Adaptor Makefile” on page 2-20 for more information.

### Required Libraries and Include Files for Adaptor Development

The following table lists the include file paths required to build an adaptor on Linux and Macintosh systems.

---

**Note** You must also specify the location of the header files and libraries required by your device’s SDK. Read the documentation that came with the device’s SDK to get this information.

---

Header Files and Libraries	Location
Adaptor kit header files	<code>\$(MATLAB)/toolbox/imaq/imaqadaptors/kit/include<sup>2</sup></code>
Image Acquisition Toolbox engine library	Linux: <code>\$(MATLAB)/bin/&lt;ARCH&gt;/libmwimaqmex.so</code> Mac: <code>\$(MATLAB)/bin/&lt;ARCH&gt;/libmwimaqmex.dylib</code>

### Creating a Makefile Based on the Demo Adaptor Makefile

To create a makefile to build your adaptor based on the demo adaptor makefile, follow these instructions.

- 1 Make a copy of the adaptor kit demo makefile and put it in your adaptor development folder. For example, if your adaptor development folder is `/home/my_folder/my_adaptor`, you might execute this command at the system prompt:

```
cd /home/my_folder/my_adaptor
```

```
cp $(MATLAB_ROOT)/toolbox/imaq/imaqadaptors/kit/demo/makefile my_makefile
```

where `MATLAB_ROOT` is your MATLAB installation folder.

- 2 Open your copy of the makefile in any text editor.
- 3 Specify the folder where you want to create your adaptor by setting the value of the `ADAPTOR_DIR` variable. By default, the demo adaptor makefile puts the adaptor in a subfolder of your development folder called `build`, but you can put your adaptor in any folder. When you are finished creating your adaptor, register it with the Image Acquisition Toolbox by using the `imaqregister` function.

---

2. MATLAB is an environment variable that contains the name of your MATLAB installation folder.

- 4 Specify the location of your MATLAB installation folder by setting the value of the `MATLAB_ROOT` variable. You can specify a relative path or an absolute path.
- 5 Specify any libraries required by your hardware device's SDK by setting the value of the `LIBS` variable. The demo adaptor makefile already specifies the library required by the adaptor kit: `libmwimaqmex`. The makefile drops the “lib” prefix and the platform-specific file extension, such as `.so`, for these libraries because the linker does not require them.
- 6 Specify any include file folders required by your hardware device's SDK by setting the value of the `INCLUDE_DIRS` variable. The demo adaptor makefile already specifies the include folders required by the adaptor kit.
- 7 Specify the name you want to give your adaptor by setting the value of the `RESULT` variable. The makefile builds the demo adaptor, so it uses the naming convention for a MathWorks adaptor, using the “mw” prefix. Do not use this convention for the name of your adaptor. The line you modify depends on your development platform:

Platform	Line Number	Change
Linux	69	Specify the name, giving it the <code>.so</code> file extension.
Macintosh	90	Specify the name, giving it the <code>.dylib</code> file extension.

- 8 Save the makefile.

After you create your makefile, use it to build your adaptor, as in the following example:

```
make -f my_makefile
```



# Providing Hardware Information

---

This chapter describes how an adaptor provides the toolbox engine with information about the image acquisition device (or devices) available on a user's system. After completing the tasks outlined in this chapter, you will be able to create your adaptor DLL, register it with the toolbox, and see it included in the list of available adaptors returned by `imaqhwinfo`.

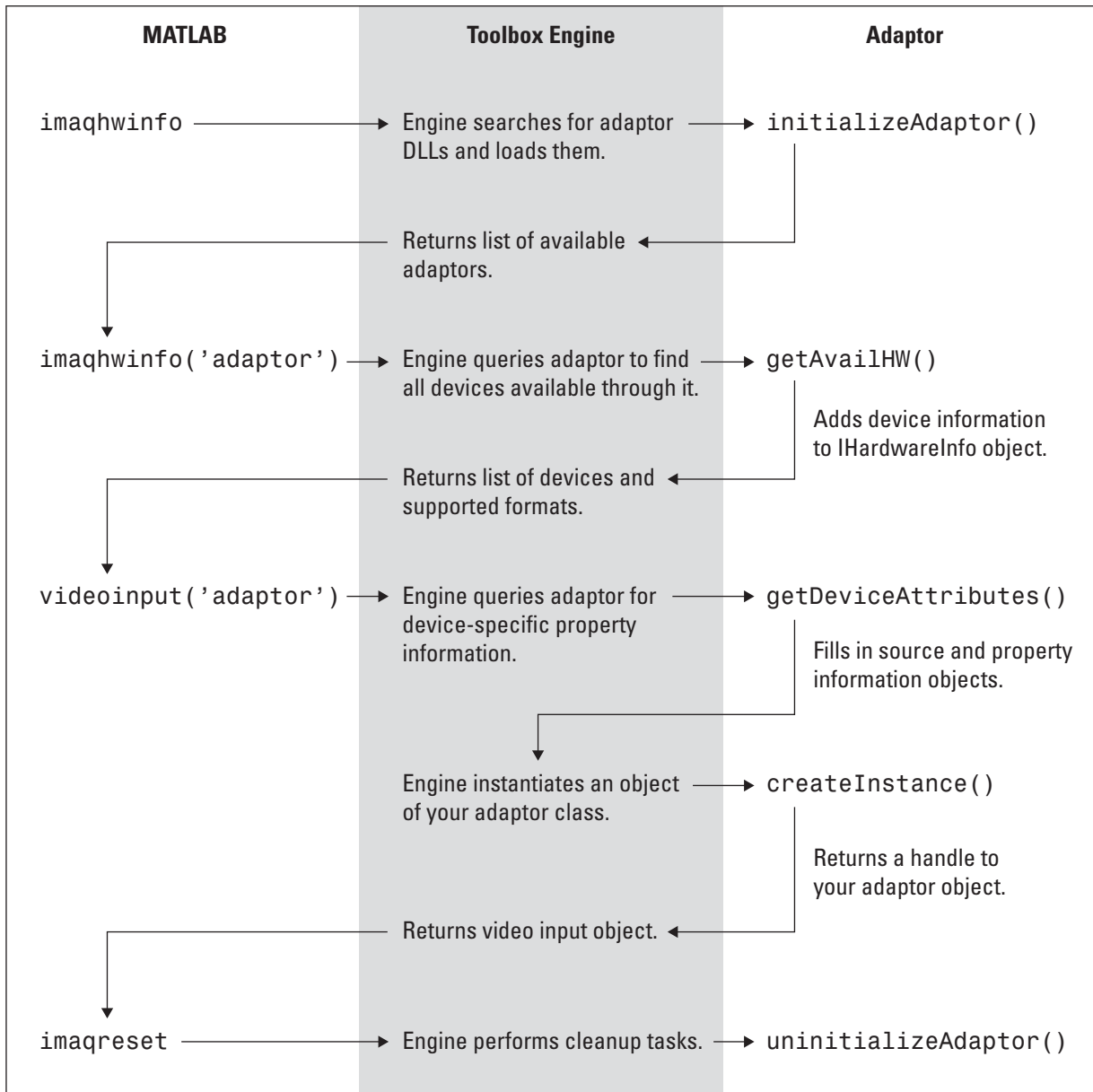
- “Using Adaptor Exported Functions” on page 3-2
- “Creating a Stub Adaptor” on page 3-4
- “Performing Adaptor and Device SDK Initialization” on page 3-7
- “Specifying Device and Format Information” on page 3-8
- “Defining Classes to Hold Device-Specific Information” on page 3-17
- “Unloading Your Adaptor DLL” on page 3-19
- “Returning Warnings and Errors to the MATLAB Command Line” on page 3-20

## Using Adaptor Exported Functions

The Image Acquisition Toolbox engine requires that every adaptor export five functions. The toolbox calls these functions to communicate with the device and acquire data. One of your primary tasks as an adaptor writer is to provide implementations of these functions. The following table lists these five exported functions with pointers to sections that provide more detail about how to implement the function. The Demo adaptor included with the Image Acquisition Toolbox software contains sample implementations of these functions in the file `mwdemoimaq.cpp`.

Export Function	Purpose
<code>initializeAdaptor()</code>	Performs any initialization required by your adaptor or your device's SDK. See "Performing Adaptor and Device SDK Initialization" on page 3-7.
<code>getAvailHW()</code>	Provides the toolbox engine with information about the device (or devices) available through your adaptor
<code>getDeviceAttributes()</code>	Specifies the video source, device-specific properties, and hardware trigger information, if supported. See "Defining Device-Specific Properties" on page 6-2.
<code>createInstance()</code>	Instantiates an object of a C++ class that represents the communication between the toolbox and the device.  <b>Note:</b> Because you cannot create a stub of this function until you define an adaptor class, this function is described in "Defining Your Adaptor Class" on page 4-2.
<code>uninitializeAdaptor()</code>	Performs any cleanup required by your adaptor and unloads the adaptor DLL. See "Unloading Your Adaptor DLL" on page 3-19.

The following figure shows the flow of control between the MATLAB command line, the toolbox engine, and the exported adaptor functions. Note that the figure does not show how the adaptor communicates with the device's SDK to get information. This varies with each device's SDK.



**Flow of Control Among MATLAB®, Toolbox Engine, and Adaptor**

## Creating a Stub Adaptor

The easiest way to start building an adaptor is to create a stub implementation, compile and link it, and then test your work. This method can be effective because it provides immediate results and lets you verify that your build environment is setup properly.

This section shows a stub implementations of an adaptor that you can copy and paste into a file in your adaptor Microsoft Visual C++ project. After compiling and linking this code, you can see your adaptor included in the list of available adaptors returned by the `imaqhwinfo` function.

---

**Note** You will not be able to instantiate an object of your adaptor class, however. That is described in “Defining Your Adaptor Class” on page 4-2.

---

To create a stub adaptor, follow this procedure:

- 1 Add a C++ source file to the adaptor C++ project. See “Setting up a Build Environment on Windows Systems” on page 2-2 for information about creating an adaptor C++ project. This source file will hold your implementations of your adaptor’s exported C++ functions. You can give this file any name. This example uses the name of the adaptor for this file, with the text string “\_exported\_fcns” appended to it, `mydevice_exported_fcns.cpp`
- 2 Copy the following lines of C++ code into this new file. This code provides stub implementations of the required adaptor exported functions. Note that you must include the adaptor kit header file `mwadaptorimaq.h`. This header file includes all other required adaptor kit header files. The `getDeviceAttributes()` stub defines a video source—see “Identifying Video Sources” on page 4-11 for more information.

```
#include "mwadaptorimaq.h"

void initializeAdaptor(){

}

void getAvailHW(imaqkit::IHardwareInfo* hardwareInfo){
```



```

}

void getDeviceAttributes(const imaqkit::IDeviceInfo* deviceInfo,
                        const char* formatName,
                        imaqkit::IPropFactory* devicePropFact,
                        imaqkit::IVideoSourceInfo* sourceContainer,
                        imaqkit::ITriggerInfo* hwTriggerInfo){

    // Create a video source
    sourceContainer->addAdaptorSource("MyDeviceSource", 1);

}

imaqkit::IAdaptor* createInstance(imaqkit::IEngine* engine, const
                                imaqkit::IDeviceInfo* deviceInfo, const
                                char* formatName){

    imaqkit::IAdaptor* adaptor = NULL;
    return adaptor;
}

void uninitializedAdaptor(){

}

```

- 3** Build the adaptor DLL. Select the **Build Solution** option on the **Build** menu.
- 4** Start the MATLAB software.
- 5** Tell the toolbox where to find this new adaptor using the `imaqregister` function. See “Registering an Adaptor with the Toolbox” on page 1-11 for more information. You only need to perform this step once.
- 6** Call the `imaqhwinfo` function. Note that the stub adaptor, named `mydeviceimaq`, is included in the list of available adaptors returned.

```
imaqhwinfo
```

```
ans =
```

```
InstalledAdaptors: {'demo' 'mydeviceimaq' 'winvideo'}  
  MATLABVersion: '7.12 (R2011a)'  
  ToolboxName: 'Image Acquisition Toolbox'  
  ToolboxVersion: '4.1 (R2011a)'
```

To get more information about the stub adaptor, call `imaqhwinfo` again, this time specifying the name of the adaptor.

---

**Note** At this point in your adaptor development, the `DeviceIDs` field and the `DeviceInfo` fields are empty.

---

```
imaqhwinfo('mydeviceimaq')
```

```
ans =
```

```
  AdaptorDllName: 'C:\My_Adaptor\mydeviceimaq.dll'  
  AdaptorDllVersion: '4.1 (R2011a)'  
  AdaptorName: 'mydeviceimaq'  
  DeviceIDs: {1x0 cell}  
  DeviceInfo: [1x0 struct]
```

## Performing Adaptor and Device SDK Initialization

Every adaptor must include an `initializeAdaptor()` function. In this function, you should perform any initialization required by your adaptor or your device's SDK. Check the documentation that came with your device to find out what, if any, initialization the SDK requires.

For example, some device SDKs provide a function that loads required DLLs into memory. Not every device's SDK requires initialization; however, every adaptor must include the `initializeAdaptor()` function, even if it is an empty implementation.

---

**Note** You do not perform device initialization in this function. For information about performing device initialization, see “Opening and Closing Connection with a Device” on page 5-11.

---

### Example

As defined by the adaptor kit, the `initializeAdaptor()` function accepts no arguments and does not return a value. The following example implements an empty `initializeAdaptor()` function.

```
void initializeAdaptor()
{
    // Perform initialization required by adaptor or device SDK.
}
```

## Specifying Device and Format Information

Every adaptor must include a `getAvailHW()` function. In this function, you provide the toolbox with information about the device (or devices) that are currently connected to the user's system. An adaptor can represent one particular device, multiple devices supported by a particular vendor, or a class of devices. For example, the toolbox includes an adaptor for Matrox devices that supports many different framegrabbers provided by that vendor.

When a user calls the `imaqhwinfo` function to find out which devices are available on their system, the toolbox engine calls your adaptor's `getAvailHW()` function to get this information. When you implement this function, you determine the names, device IDs, and format names that the toolbox displays to users.

This section includes the following topics

- “Using Objects to Store Device and Format Information” on page 3-8
- “Suggested Algorithm” on page 3-10
- “Storing Device Information” on page 3-11
- “Storing Format Information” on page 3-12
- “Storing Adaptor Data” on page 3-17

## Using Objects to Store Device and Format Information

The adaptor kit provides three classes to store device and format information:

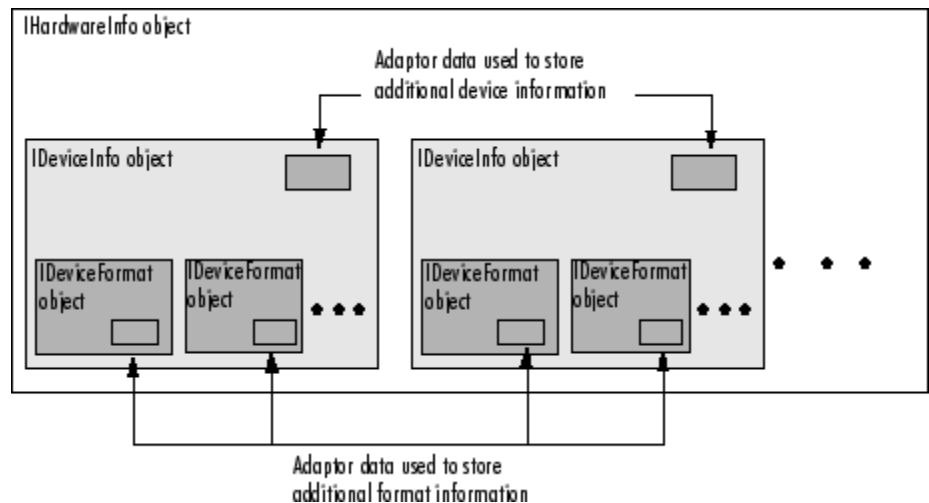
<b>Adaptor Kit Object</b>	<b>Purpose</b>
<code>IHardwareInfo</code>	Overall container class for hardware information
<code>IDeviceInfo</code>	Container for information about a particular device
<code>IDeviceFormat</code>	Container for information about the formats supported by a particular device

When the toolbox engine calls your adaptor's `getAvailHW()` function, it passes your adaptor a handle to an `IHardwareInfo` object.

For each device you want to make available through your adaptor, you must create an `IDeviceInfo` object and then store the object in the `IHardwareInfo` object. For each format supported by a device, you must create an `IDeviceFormat` object and then store the object in the `IDeviceInfo` object.

The following figure shows the relationship of these adaptor kit objects. The figure shows the `IHardwareInfo` object containing two `IDeviceInfo` objects, but it can contain more. Similarly, each `IDeviceInfo` object is shown containing two `IDeviceFormat` objects, but it can also contain more.

Note in the figure that both the `IDeviceInfo` and `IDeviceFormat` objects contain adaptor data. Adaptor data is an optional way to store additional information about a device or format in an `IDeviceInfo` or `IDeviceFormat` object. See “Defining Classes to Hold Device-Specific Information” on page 3-17 for more information.



**Adaptor Kit Objects Used to Store Device and Format Information**

## Suggested Algorithm

The `getAvailHW()` function accepts one argument: the handle to an `IHardwareInfo` object. The toolbox engine creates this `IHardwareInfo` object and passes the handle to your adaptor when it calls your adaptor's `getAvailHW()` function. The `getAvailHW()` function does not return a value.

```
void getAvailHW(imaqkit::IHardwareInfo* hardwareInfo)
```

Your adaptor's `getAvailHW()` function must provide the engine with the following information for each device:

- Device ID
- Device name
- Formats supported by the device, including the default format
- Whether or not the device supports device configuration files (also known as camera files)

---

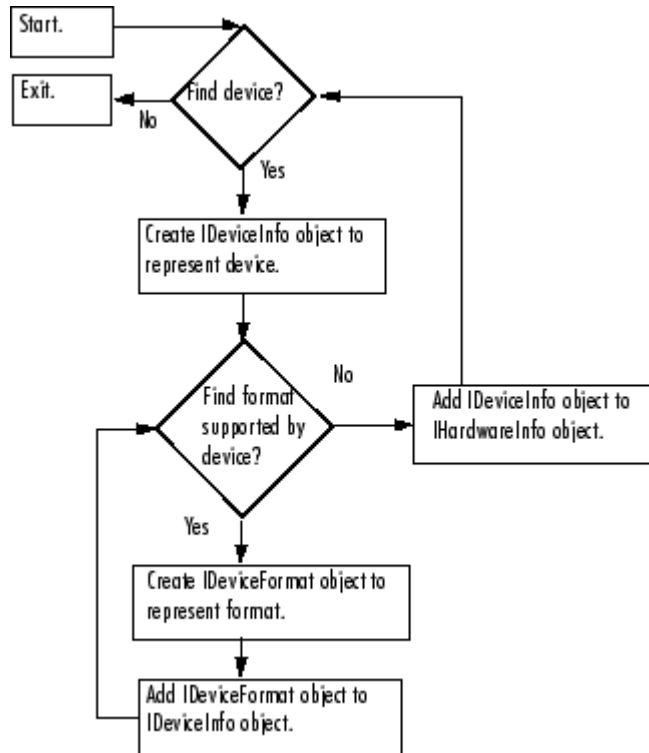
**Note** You can optionally store additional device-specific information in the adaptor data of an `IDeviceInfo` object or an `IDeviceFormat` object. See “Defining Classes to Hold Device-Specific Information” on page 3-17 for more information.

---

The following outlines the steps typically performed by a `getAvailHW()` function. The figure that follows presents this algorithm in flowchart form.

- 1** Determine which devices are available through the adaptor. Adaptors typically make calls to the device's SDK to get this information.
- 2** For each device found, create an `IDeviceInfo` object — see “Storing Device Information” on page 3-11.
  - a** For each format supported by the device, create an `IDeviceFormat` object — see “Storing Format Information” on page 3-12.
  - b** Add each device format object that you create to the `IDeviceInfo` object.
- 3** Add the `IDeviceInfo` object to the `IHardwareInfo` object passed to your `getAvailHW()` function by the toolbox engine.

- 4 Repeat this procedure for each device available on the user's system.



### Suggested Algorithm for getAvailHW() Function

## Storing Device Information

You store device information in an `IDeviceInfo` object. To create this object, use the `createDeviceInfo()` member function of the `IHardwareInfo` object, as in the following example:

```

imaqkit::IDeviceInfo* deviceInfo =
    hardwareInfo->createDeviceInfo(1, "MyDevice");
  
```

As arguments to `createDeviceInfo()`, you specify:

- Name you want to assign to the device

- ID you want to assign to the device

You can specify any values for these arguments, but note that they are visible to toolbox users in the structure returned by `imaqhwinfo`.

For device name, specify a text string that easily identifies the device. For example, you might use the manufacturer's model number.

The ID you specify for the device must be unique because it identifies the device for the adaptor. Because MATLAB indexing starts at 1, start the numbering of device IDs at 1, not zero. The device with ID 1 is the default device for your adaptor.

The `IDeviceInfo` object you create supports member functions to perform many tasks, such as creating, adding, and retrieving the `IDeviceFormat` objects associated with the device, and indicating whether the device supports device configuration files (also known as camera files). For more information about this class, see the Image Acquisition Toolbox Adaptor Kit API Reference documentation.

### **Adding the IDeviceInfo Object to the IHardwareInfo Object**

After you create the `IDeviceInfo` object, you must add it to the `IHardwareInfo` object that the engine passed to your `getAvailHW()` function. Use the `addDevice()` member function of the `IHardwareInfo` object, as in the following example:

```
hardwareInfo->addDevice(deviceInfo);
```

### **Storing Format Information**

You store format information in an `IDeviceFormat` object. To create this object, use the `createDeviceFormat()` member function of an `IDeviceInfo` object, as in the following example:

```
imaqkit::IDeviceFormat* deviceFormat =  
    deviceInfo->createDeviceFormat(1, "RS170");
```

As arguments to `createDeviceFormat()`, you specify

- Name you want to assign to the format



- ID you want to assign to the format

For the format name, specify a text string that describes the format. Note that the format name is visible to toolbox users. Use names that might be familiar to users of the device, such as a name similar to the format names used by the device manufacturer.

Because the ID is not exposed to users, you can specify any convenient value. For example, if the device's SDK uses numerical identifiers to indicate a format, use these values for your format IDs.

You can use `IDeviceFormat` member functions to perform many tasks, such as, retrieving the format name and format ID, and determining whether the format is the default format. For more information about this class, see the Image Acquisition Toolbox Adaptor Kit API Reference documentation.

### **Adding an `IDeviceFormat` Object to an `IDeviceInfo` Object**

After you create the `IDeviceFormat` object, add it to the `IDeviceInfo` object that represents the device. Use the `addDeviceFormat()` member function of the `IDeviceInfo` object, as in the following example:

```
deviceInfo->addDeviceFormat(deviceFormat,true);
```

### **Specifying the Default Format**

When you add a format to an `IDeviceInfo` object, you use the second argument to the `addDeviceFormat()` function to specify whether the format should be used as the default format for the device. The `imaqhwinfo` function returns the name of the default format in the `DefaultFormat` field. To make a format the default, set this argument to `true`.

### **Configuring Device Configuration File (Camera File) Support**

Some devices use device configuration files (also known as camera files) to configure formats and other properties. If a device supports device configuration files, you do not need to create `IDeviceFormat` objects. Instead, use the `setDeviceFileSupport()` member function of the `IDeviceInfo` object to indicate that the device supports device configuration files, as in the following example:

```
deviceInfo->setDeviceFileSupport(true);
```

For these devices, users pass the full path of the device configuration file as the third argument to the `videoinput` function, instead of specifying a device format string. Adaptor writers do not need to perform any processing of the device configuration file; you just pass the file name to the device.

### **Example: Providing Device and Format Information**

The following example presents a simple implementation of a `getAvailHW()` function that specifies information for one device with two formats. The intent of this example is to show how you create the objects necessary to store device and format information. If you add this code to the `mydeviceimaq` adaptor, you can run `imaqhwinfo('mydeviceimaq')` to view the device information.

- 1 Replace the stub implementation of the `getAvailHW()` function, created in “Creating a Stub Adaptor” on page 3-4, with this code:

```
void getAvailHW(imaqkit::IHardwareInfo* hardwareInfo)
{
    // Create a Device Info object.
    imaqkit::IDeviceInfo* deviceInfo =
        hardwareInfo->createDeviceInfo(1,"MyDevice");

    // Create a Device Format object.
    imaqkit::IDeviceFormat* deviceFormat =
        deviceInfo->createDeviceFormat(1,"RS170");

    // Add the format object to the Device object.
    // Specifying 'true' makes this format the default format.
    deviceInfo->addDeviceFormat(deviceFormat, true);

    // Create a second Device Format object.
    imaqkit::IDeviceFormat* deviceFormat2 =
        deviceInfo->createDeviceFormat(2,"PAL");

    // Add the second format object to the Device object.
    deviceInfo->addDeviceFormat(deviceFormat2, false);

    // Add the device object to the hardware info object.
```

```

hardwareInfo->addDevice(deviceInfo);

}

```

- 2** Rebuild the `mydeviceimaq` project to create a new DLL.
- 3** Start the MATLAB software and run the `imaqhwinfo` function, specifying the adaptor name `mydeviceimaq` as an argument. Note how the `DeviceIDs` field and the `DeviceInfo` field of the structure returned by `imaqhwinfo` now contain data.

```

dev = imaqhwinfo('mydeviceimaq')

dev =

    AdaptorDllName: 'C:\My_Adaptor\mydeviceimaq.dll'
    AdaptorDllVersion: '4.1 (R2011a)'
    AdaptorName: 'mydeviceimaq'
    DeviceIDs: {[1]}
    DeviceInfo: [1x1 struct]

```

To view detailed information about the device, view the structure in the `DeviceInfo` field. The `DeviceInfo` field is an array of structures, where each structure provides detailed information about a particular device.

```

dev_info = dev.DeviceInfo

dev_info =

    DefaultFormat: 'RS170'
    DeviceFileSupported: 0
    DeviceName: 'MyDevice'
    DeviceID: 1
    ObjectConstructor: 'videoinput('mydeviceimaq', 1)'
    SupportedFormats: {'PAL' 'RS170'}

```

The following table describes the information in each field, with references to other sections that provide more information.

<b>Field</b>	<b>Description</b>
DefaultFormat	Text string that specifies the default format used by the device. You define the default format when you add the IDeviceFormat object to the IDeviceInfo object; see “Specifying the Default Format” on page 3-13.
DeviceFileSupported	Boolean value that tells whether the device supports device configuration files (also known as camera files). You use the setDeviceFileSupport() member function of the IDeviceInfo object to set this value; see “Configuring Device Configuration File (Camera File) Support” on page 3-13.
DeviceName	Text string that identifies a particular device. You define this value when you create the IDeviceInfo object; see “Storing Device Information” on page 3-11.
DeviceID	Numeric value that uniquely identifies a particular device. You define this value when you create the IDeviceInfo object; see “Storing Device Information” on page 3-11.
ObjectConstructor	Text string that contains the videoinput function syntax required to create an object instance for this device. The toolbox engine creates this string.
SupportedFormats	Cell array of strings that identifies the formats this device supports. You define this value when you create the IDeviceFormat objects associated with a particular device; see “Storing Format Information” on page 3-12.

## Defining Classes to Hold Device-Specific Information

You might want to store more information about a device or format than the `IDeviceInfo` and `IDeviceFormat` objects allow. One way to do this is to define a new class that contains this additional information. Then, in your adaptor, instantiate an object of this class and store it in the adaptor data of the `IDeviceInfo` or `IDeviceFormat` objects. Using adaptor data is a good way to pass important information around inside your adaptor because the `IDeviceInfo` and `IDeviceFormat` objects are passed to other adaptor functions.

Using adaptor data is a three-step process:

- 1** Define a class to hold the device or format information. See “Defining a Device or Format Information Class” on page 3-17 for more information.
- 2** Instantiate an object of this class in your adaptor. Use the constructor you define for your class.
- 3** Store the object in the adaptor data of the `IDeviceInfo` or `IDeviceFormat` object. See “Storing Adaptor Data” on page 3-17 for more information.

### Defining a Device or Format Information Class

The class that you define to store additional device or format information must be derived from the `IMAQinterface` class. Subclassing the `IMAQInterface` class ensures that all memory deallocations for these classes are routed through the toolbox engine.

For an example of such a class, see the `DemoDeviceFormat` class in the demo adaptor, defined in the file `DemoDeviceFormat.h`.

### Storing Adaptor Data

To store your device or format class in the adaptor data of an `IDeviceInfo` or `IDeviceFormat` object, use the `setAdaptorData()` member function of the object.

---

**Note** The objects you store in adaptor data are automatically destroyed when the `IDeviceInfo` and `IDeviceFormat` objects are destroyed. Once you store an object in adaptor data, do not try to destroy the objects yourself.

---

The demo adaptor provides an example, defining a class to hold additional format information. This class, named `DemoDeviceFormat`, stores format information such as width, height, and color space. The following example, taken from the demo adaptor, shows how to instantiate an object of this derived class, assign values to the data members of the class, and then store the object in the adaptor data of the `IDeviceFormat` object.

```
DemoDeviceFormat* rgbFormatInfo = new DemoDeviceFormat();

rgbFormatInfo->setFormatWidth(demo::RGB_FORMAT_WIDTH);
rgbFormatInfo->setFormatHeight(demo::RGB_FORMAT_HEIGHT);
rgbFormatInfo->setFormatNumBands(demo::RGB_FORMAT_BANDS);
rgbFormatInfo->setFormatColorSpace(imaqkit::colorspaces::RGB);

deviceFormat->setAdaptorData(rgbFormatInfo);
```

### Accessing Adaptor Data

To access the adaptor data stored in an `IDeviceInfo` or `IDeviceFormat` object, use the `getAdaptorData()` member function of the object.

The following example, taken from the demo adaptor, shows how to retrieve the adaptor data from the `IDeviceFormat` object. In the example, `selectedFormat` is a `DemoDeviceFormat` object. Note that because the `getAdaptorData()` member function returns a handle to the `IMAQInterface` class, you must cast the returned object to your defined class.

```
dynamic_cast<DemoDeviceFormat*>(selectedFormat->getAdaptorData());
```

## Unloading Your Adaptor DLL

Every adaptor must include an `uninitializeAdaptor()` function. The engine calls this function when a user resets the toolbox, by calling the `imaqreset` function, or exits the MATLAB software.

Your adaptor's implementation of this function depends upon the requirements of your hardware. Every adaptor must include the `uninitializeAdaptor()` function, even if it is an empty implementation.

### Example

As defined by the adaptor kit, the `uninitializeAdaptor()` function accepts no arguments and does not return a value. The following example implements an empty `initializeAdaptor()` function.

```
void uninitializeAdaptor()
{
    // Perform any cleanup your hardware requires.
}
```

## Returning Warnings and Errors to the MATLAB Command Line

To return error or warning messages from your adaptor to the MATLAB command line, use the `adaptorError()` and `adaptorWarning()` functions. These functions implement an interface similar to the MATLAB error and warning functions. Using these functions, you can display a text message at the MATLAB command line.

You must also include a message ID in your message using the format

```
<component>[:<component>]:<mnemonic>
```

where `<component>` and `<mnemonic>` are alphanumeric strings (for example, `'MATLAB:divideByZero'`). The identifier can be used to enable or disable display of the identified warning. For more information, type `help warning` or `help error` at the MATLAB command line.

The following example outputs a warning message to the MATLAB command line.

```
imaqkit::adaptorWarn("MyDeviceAdaptor:constructor", "In  
constructor");
```



# Defining Your Adaptor Class

---

This chapter describes how to define your adaptor class and instantiate an object of this class. Every adaptor must define a class that is a subclass of the adaptor kit `IAdaptor` abstract class. This abstract class defines several virtual functions that your adaptor class must implement. This chapter gets you started with an adaptor class implementation by creating a stub implementation. This stub implementation will enable you to create a video input object with your adaptor using the `videoinput` function. In subsequent chapters, you complete adaptor development by fleshing out the implementations of these virtual functions.

- “Defining Your Adaptor Class” on page 4-2
- “Using IAdaptor Abstract Class Virtual Functions” on page 4-4
- “Creating Stub Implementation of Your Adaptor Class” on page 4-6
- “Identifying Video Sources” on page 4-11
- “Instantiating an Adaptor Object” on page 4-13

# Defining Your Adaptor Class

The next four topics describe how to define your adaptor class and instantiate an object of this class. Every adaptor must define a class that is a subclass of the adaptor kit `IAdaptor` abstract class. This abstract class defines several virtual functions that your adaptor class must implement. The next four topics get you started with an adaptor class implementation by creating a stub implementation. This stub implementation will enable you to create a video input object with your adaptor using the `videoinput` function. In subsequent topics, you complete adaptor development by fleshing out the implementations of these virtual functions.

When a user calls the `videoinput` function to create a video input object, the toolbox engine calls two of the exported functions in your adaptor:

- `getDeviceAttributes()`
- `createInstance()`

(To see a flow-of-control diagram that shows how these functions fit with the other required exported functions, see “Using Adaptor Exported Functions” on page 3-2.)

The `getDeviceAttributes()` function defines which properties of the device that you want to expose to users. This function is described only briefly in this chapter (see “Identifying Video Sources” on page 4-11). For complete information about implementing this exported function, see “Defining Device-Specific Properties” on page 6-2.

The toolbox engine calls your adaptor’s `createInstance()` function to instantiate an object of the adaptor class. Every adaptor must define a class that is a subclass of the `IAdaptor` abstract class, providing implementations of the pure virtual functions defined in this abstract class.

This chapter describes how to create a stub implementation of your adaptor class (see “Creating Stub Implementation of Your Adaptor Class” on page 4-6) and create the constructor and destructor for this class, see “Instantiating an Adaptor Object” on page 4-13. In “Acquiring Image Data” on page 5-2 you flesh out the implementation of these functions.

---

**Note** Because each instance of your adaptor class is associated with a specific format selected by the user, most of the information returned by these functions is static.

---

## Using IAdaptor Abstract Class Virtual Functions

The following table lists the pure virtual functions defined by the IAdaptor abstract class, in alphabetical order. The Demo adaptor included with the Image Acquisition Toolbox software contains sample implementations of these functions in the file DemoAdaptor.cpp.

Pure Virtual Function	Description with Declaration
closeDevice()	Terminates the connection to a device — see “Suggested Algorithm for closeDevice()” on page 5-14.  virtual bool closeDevice();
getDriverDescription()	Returns a character string identifying the device driver used by the device — see “Specifying Device Driver Identification Information” on page 5-37.  virtual const char* getDriverDescription() const;
getDriverVersion()	Returns a character string identifying the version number of the device driver used by the device — see “Specifying Device Driver Identification Information” on page 5-37.  virtual const char* getDriverVersion() const;
getFrameType()	Returns the toolbox-defined frame type used to store the images provided by the device — see “Specifying Frame Type” on page 5-8.  imaqkit::frametypes::FRAMETYPE getFrameType() const;
getMaxHeight()	Returns an integer specifying the maximum vertical resolution (the number of lines) of the image data — see “Specifying Image Dimensions” on page 5-6.  virtual int getMaxHeight() const;
getMaxWidth()	Returns an integer specifying the maximum horizontal resolution (in pixels) of the image data — see “Specifying Image Dimensions” on page 5-6.  virtual int getMaxWidth() const;

<b>Pure Virtual Function</b>	<b>Description with Declaration</b>
<code>getNumberOfBands()</code>	Returns the number of bands used in the returned image data — see “Specifying Image Dimensions” on page 5-6.  <code>virtual int getNumberOfBands() const;</code>
<code>openDevice()</code>	Opens a connection with the device, preparing it for use — see “Opening and Closing Connection with a Device” on page 5-11.  <code>virtual bool openDevice();</code>
<code>startCapture()</code>	Starts retrieving frames from the device — see “Starting and Stopping Image Acquisition” on page 5-16.  <code>virtual bool startCapture();</code>
<code>stopCapture()</code>	Stops retrieving frames from the device — see “Suggested Algorithm for stopCapture()” on page 5-18.  <code>virtual bool stopCapture();</code>

## Creating Stub Implementation of Your Adaptor Class

To create a stub implementation of your adaptor class, follow this procedure:

- 1 Add a C++ header file to the adaptor C++ project. This header file will hold the definition of your adaptor class. You can give your class any name. This example uses the following naming convention:

*vendor\_name* + adaptor

For this example, the header file that contains the adaptor class definition is named `MyDeviceAdaptor.h`.

- 2 Copy the following class definition into the header file. This adaptor class contains all the virtual functions defined by the `IAdaptor` abstract class.

```
#include "mwadaptorimaq.h" // required header

class MyDeviceAdaptor : public imaqkit::IAdaptor {

public:

    // Constructor and Destructor
    MyDeviceAdaptor(imaqkit::IEngine* engine, const
                    imaqkit::IDeviceInfo* deviceInfo,
                    const char* formatName);

    virtual ~MyDeviceAdaptor();

    // Adaptor and Image Information Functions
    virtual const char* getDriverDescription() const;
    virtual const char* getDriverVersion() const;
    virtual int getMaxWidth() const;
    virtual int getMaxHeight() const;
    virtual int getNumberOfBands() const;
    virtual imaqkit::frametypes::FRAMETYPE getFrameType() const;

    // Image Acquisition Functions
    virtual bool openDevice();
    virtual bool closeDevice();
```

```

        virtual bool startCapture();
        virtual bool stopCapture();

};

```

- 3** Add a C++ source file to the adaptor project. You can give the source file any name. This example names the file `mydeviceadaptor.cpp`.
- 4** Copy the following stub implementations of all the adaptor virtual functions into the C++ source file.

```

#include "MyDeviceAdaptor.h"
#include "mwadaptorimaq.h"

// Class constructor
MyDeviceAdaptor::MyDeviceAdaptor(imaqkit::IEngine* engine,
                                   imaqkit::IDeviceInfo* deviceInfo,
                                   const char* formatName):imaqkit::IAdaptor(engine){
}

// Class destructor
MyDeviceAdaptor::~MyDeviceAdaptor(){
}

// Device driver information functions
const char* MyDeviceAdaptor::getDriverDescription() const{
    return "MyDevice_Driver";
}
const char* MyDeviceAdaptor::getDriverVersion() const {
    return "1.0.0";
}

// Image data information functions
int MyDeviceAdaptor::getMaxWidth() const { return 640;}
int MyDeviceAdaptor::getMaxHeight() const { return 480;}
int MyDeviceAdaptor::getNumberOfBands() const { return 1;}

imaqkit::frametypes::FRAMETYPE MyDeviceAdaptor::getFrameType()
    const {
    return imaqkit::frametypes::MONO8;
}

```

```
}

// Image acquisition functions
bool MyDeviceAdaptor::openDevice() {return true;}
bool MyDeviceAdaptor::closeDevice(){return true;}
bool MyDeviceAdaptor::startCapture(){return true;}
bool MyDeviceAdaptor::stopCapture(){return true;}
```

- 5** Add a reference to your adaptor class header file to the file containing the exported functions, `mydevice_exported_fcns.cpp`, that you created in “Using Adaptor Exported Functions” on page 3-2. This is needed because the `createInstance()` exported function instantiates an object of this class.

```
#include "MyDeviceAdaptor.h"
```

- 6** Edit the stub implementations of the `createInstance()` function, also in the exported functions source file, `mydevice_exported_fcns.cpp`. Make the function instantiate an object of your adaptor class, highlighted in italics below. (In the stub, it returns `NULL`.)

```
void getDeviceAttributes(const imaqkit::IDeviceInfo* deviceInfo,
                        const char* formatName,
                        imaqkit::IPropFactory* devicePropFact,
                        imaqkit::IVideoSourceInfo* sourceContainer,
                        imaqkit::ITriggerInfo* hwTriggerInfo){

    // Create a video source
    sourceContainer->addAdaptorSource("MyDeviceSource", 1);
}

imaqkit::IAdaptor* createInstance(imaqkit::IEngine* engine,
                                 imaqkit::IDeviceInfo* deviceInfo,
                                 char* formatName){

    imaqkit::IAdaptor* adaptor = new
                               MyDeviceAdaptor(engine, deviceInfo, formatName);

    return adaptor;
}
```



- 7** Build the adaptor DLL. Select the **Build Solution** option on the **Build** menu.
- 8** Start the MATLAB software.
- 9** Call the `imaqhwinfo` function. Note how the adaptor, named `mydeviceimaq`, is included in the list of available adaptors returned by `imaqhwinfo`. If you have not previously registered your adaptor DLL, register your adaptor with the toolbox — see “Registering an Adaptor with the Toolbox” on page 1-11. To view more detailed information about your adaptor, call `imaqhwinfo` again with this syntax:  

```
dev_info = imaqhwinfo('mydeviceimaq');
```
- 10** Create a video input object for the `mydeviceimaq` adaptor, using the `videoinput` function.

---

**Note** While you can create a video input object with your adaptor, you cannot use it to acquire video from a device. You must implement the adaptor class acquisition functions to do that. See “Acquiring Image Data” on page 5-2 for more information.

---

```
vid = videoinput('mydeviceimaq',1)
```

Summary of Video Input Object Using 'MyDevice'.

Acquisition Source(s): MyDeviceSource is available.

Acquisition Parameters: 'MyDeviceSource' is the current selected source.  
10 frames per trigger using the selected source.  
'640x480' video data to be logged upon START.  
Grabbing first of every 1 frame(s).  
Log data to 'memory' on trigger.

Trigger Parameters: 1 'immediate' trigger(s) on START.

Status: Waiting for START.  
0 frames acquired since starting.  
0 frames available for GETDATA.

## Identifying Video Sources

The toolbox defines a video source as one or more hardware inputs that are treated as a single entity. For example, an image acquisition device might support an RGB source that is made up of three physical connections. The toolbox would treat the three connections as a single video source. Read the documentation that came with your device to determine the video sources it supports.

When a user creates a video input object, the toolbox engine automatically creates a video source object for each source supported by an adaptor. The `Source` property of the video input object lists the available video sources. The video source object that is used to acquire data is called the currently selected video source. By default, the toolbox engine uses the first video source you define as the selected source, but users can switch the selected source by setting the value of the video input object's `SelectedSourceName` property.

### Suggested Algorithm

Your adaptor's `getDeviceAttributes()` function must define all the properties and sources of video data you want to make available to users. This section only covers defining video sources, which means determining the text labels used to identify the available video sources. For information about making device properties available to users, see “Defining Device-Specific Properties” on page 6-2.

---

**Note** Every adaptor must specify at least one video source; otherwise, you cannot create a video input object if a video source has not been specified.

---

You use the `addAdaptorSource()` member function of the `IVideoSourceInfo` object that the toolbox engine passes to your adaptor's `getDeviceAttributes()` function to define a video source. You specify the following two arguments:

- Name you want to assign to the source
- ID you want to assign to the source

The name is visible to users. Choose a name that clearly identifies the source. If the device vendor assigns names to the sources, you can use the same names. For example, Matrox some devices identify video sources by the labels `ch0`, `ch1`, etc.

Because the ID is not exposed to users, you can specify any convenient value. For example, if the device's SDK uses numerical identifiers to indicate a video source, use these values for your source IDs.

For example, this code specifies a video source.

```
sourceContainer->addAdaptorSource("MyDeviceSource",1)
```

You can use `IVideoSourceInfo` member functions to perform many tasks, such as determining the currently selected source. For more information about this class, see the Image Acquisition Toolbox Adaptor Kit API Reference documentation.

## Instantiating an Adaptor Object

Every adaptor must include a `createInstance()` function. The engine calls this function to instantiate an object of your adaptor's class. This section includes the following topics:

- “Suggested Algorithm” on page 4-13
- “Implementing Your Adaptor Class Constructor” on page 4-14
- “Implementing Your Adaptor Class Destructor” on page 4-15

### Suggested Algorithm

The algorithm for the `createInstance()` function is simple: call the adaptor class constructor to instantiate an object of an adaptor class and return a handle to the object. The engine passes these arguments to your adaptor's `createInstance()` function. The `createInstance()` function accepts three arguments:

```
imaqkit::IAdaptor* createInstance(imaqkit::IEngine* engine,
                                imaqkit::DeviceInfo* deviceInfo,
                                const char* FormatName)
```

The following table describes these arguments. Your adaptor's `createInstance()` function must return a handle to an `IAdaptor` object.

Argument	Purpose
<code>engine</code>	Handle to an <code>IEngine</code> object that enables your adaptor to communicate with the engine.
<code>deviceInfo</code>	Handle to an <code>IDeviceInfo</code> object that represents the characteristics of a particular device. This object will be one of the <code>IDeviceInfo</code> objects you created in your <code>getAvailHW()</code> function.
<code>formatName</code>	A text string that specifies the name of a video format supported by the device or the full path of a device configuration file. If this specifies a format, it must be one of the formats represented by the <code>IDeviceFormat</code> objects you created in your <code>getAvailHW()</code> function.

### Implementing Your Adaptor Class Constructor

Because you write the code that calls your adaptor class constructor, you can define the arguments accepted by your adaptor class constructor. At a minimum, adaptor constructors must accept a handle to an `IEngine` object that represents the connection between the engine and your adaptor. This is defined by the `IAdaptor` superclass. Your adaptor uses this handle to access engine functions for packaging image frames and returning them to the engine.

In addition to this required argument, many adaptors also accept two other arguments

- Handle to an `IDeviceInfo` object that specifies the device to which you want to connect
- Text string specifying the desired acquisition source format or the full path to a device configuration file (also known as a camera file)

These are the same arguments passed to your adaptor's `createInstance()` function.

### Suggested Algorithm

The requirements of your image acquisition device will determine what your class constructor must do. Class constructors typically perform tasks that only need to be performed once by the class, such as

- Setting up listeners for all device-specific properties. Listeners notify the class when a user changes the value of a device-specific property. See “Implementing Get and Set Support for Device-Specific Properties” on page 6-11.
- Creating a critical section object. Your adaptor will use the critical section to protect data members that might be accessed from multiple threads. See “Using Critical Sections” on page 5-33.

---

**Note** Your class constructor should not perform any device initialization, because a user might want to create multiple video input objects. Device initialization occurs when a user has requested frames — see “Opening and Closing Connection with a Device” on page 5-11.

---

### Example

The following example shows a `createInstance()` function that instantiates an object of class `MyDeviceAdaptor`.

```
imaqkit::IAdaptor* createInstance(imaqkit::IEngine* engine,
                                imaqkit::IDeviceInfo* deviceInfo,
                                char* formatName) {

    // Instantiate an object of your IAdaptor-derived class

    imaqkit::IAdaptor* adaptor = new
        MyDeviceAdaptor(engine,deviceInfo,formatName);

    return adaptor;
}
```

### Implementing Your Adaptor Class Destructor

This destructor is invoked whenever the associated video input object in the MATLAB software is deleted.

```
delete(vid);
```

A destructor for a class cannot take parameters or return a value. An adaptor class, as a derived class, must contain a destructor and the destructor must be declared as `virtual`.

```
virtual ~MyAdaptor();
```

### Suggested Algorithm

The design of your adaptor class and the requirements of your image acquisition device will determine what tasks your class destructor must

perform. Your class must contain a destructor even if it is an empty implementation. Some examples of tasks a destructor might perform include:

- Stopping the device, if it is currently acquiring frames — see “Suggested Algorithm for stopCapture()” on page 5-18.
- Closing the connection with the device — see “Suggested Algorithm for closeDevice()” on page 5-14.
- Deleting the critical section object — see “Using Critical Sections” on page 5-33.

### **Example**

This example shows a skeletal implementation of a destructor. For a more complete example, see the demo adaptor class.

```
MyAdaptor::~MyAdaptor(){  
  
}
```



# Acquiring Image Data

---

This chapter describes how to implement the adaptor member functions to perform image acquisition. After completing the tasks outlined in this chapter, you will be able to create a video input object, start it, and trigger an acquisition.

- “Acquiring Image Data” on page 5-2
- “Specifying the Format of the Image Data” on page 5-6
- “Opening and Closing Connection with a Device” on page 5-11
- “Starting and Stopping Image Acquisition” on page 5-16
- “Implementing the Acquisition Thread Function” on page 5-20
- “Supporting ROIs” on page 5-27
- “Supporting Hardware Triggers” on page 5-30
- “Using Critical Sections” on page 5-33
- “Specifying Device Driver Identification Information” on page 5-37

# Acquiring Image Data

After completing chapters 3 and 4, you can see your adaptor included in the list of adaptors returned by `imaqhwinfo` and you can create a video input object using the `videoinput` function. Now it's time to acquire data from your device. In this chapter, you flesh out the stub implementations of the adaptor class virtual functions that work together to acquire data.

## User Scenario

The following example shows how a toolbox user initiates the acquisition of image frames. The example calls the `videoinput` function to create a video input object and then calls the `start` function to start the object. Note in the summary that ten image frames are acquired.

```
vid = videoinput('winvideo');
```

```
start(vid);
```

```
vid
```

Summary of Video Input Object Using 'IBM PC Camera'.

Acquisition Source(s): input1 is available.

Acquisition Parameters: 'input1' is the current selected source.  
10 frames per trigger using the selected source.  
'RGB555\_128x96' video data to be logged upon START.  
Grabbing first of every 1 frame(s).  
Log data to 'memory' on trigger.

Trigger Parameters: 1 'immediate' trigger(s) on START.

Status: Waiting for START.  
10 frames acquired since starting.  
10 frames available for GETDATA.

## Triggering

In the previous example, the `start` function opens the connection with the device but does not actually cause the acquisition of image data. The toolbox

uses triggers to control image acquisition. By default, video input objects are configured with an immediate trigger so, in the example, when you start the object, an immediate trigger fires.

The toolbox also supports two other types of triggers: manual and hardware. With a manual trigger, after starting a video input object, you must call the `trigger` function to acquire data. With hardware triggers, you start the object and it waits until it receives a signal from an external device to start acquiring data.

The toolbox handles immediate and manual triggering automatically; you do not have to include any special processing in your adaptor. Supporting hardware triggers, requires some adaptor development work. For more information, see “Supporting Hardware Triggers” on page 5-30.

## Overview of Virtual Functions Used to Acquire Data

The pure virtual functions in your adaptor class that you must implement work together to acquire data. However, the main steps are:

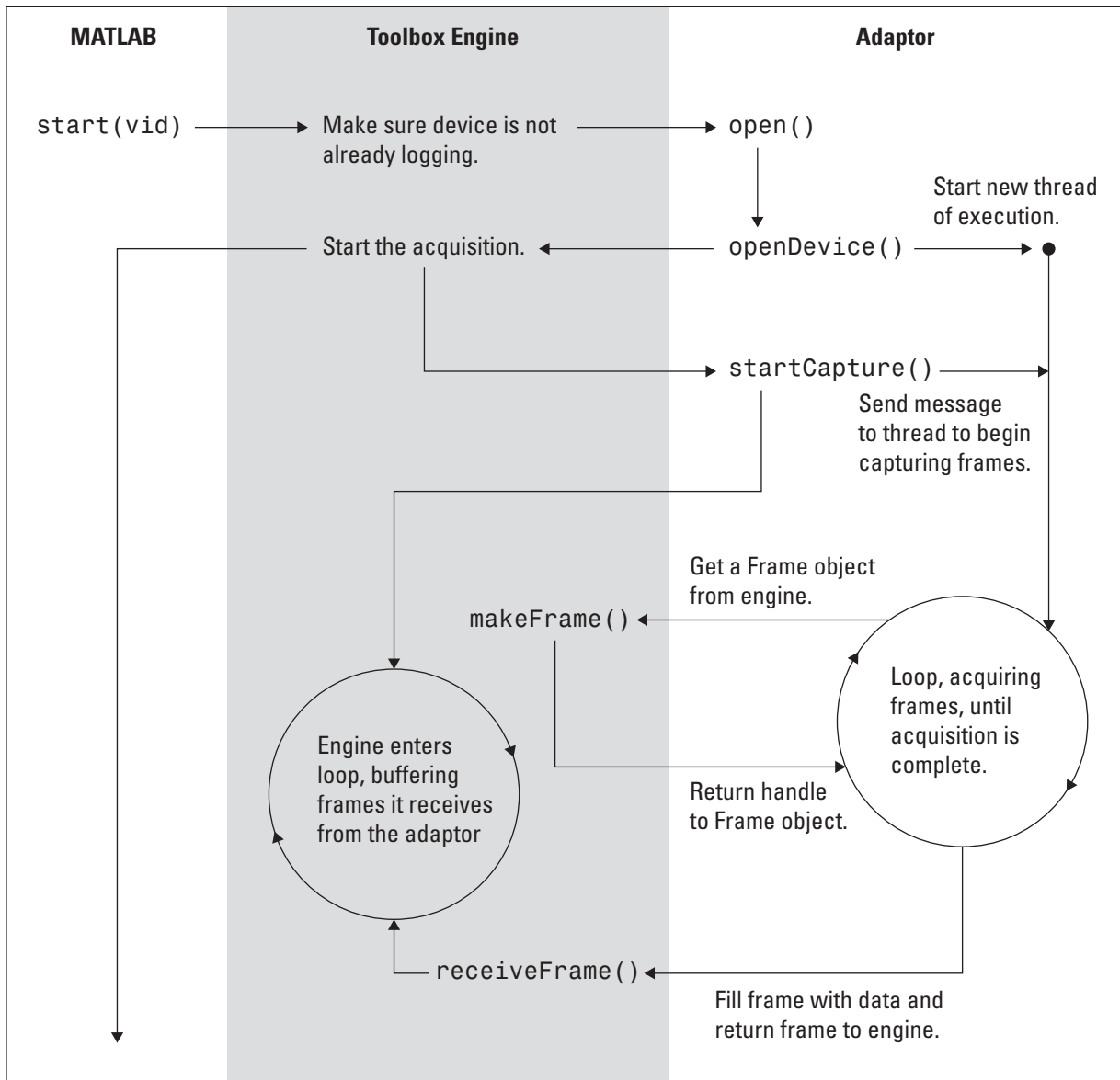
- 1** Specify the format of the video data in the `getMaxHeight()`, `getMaxWidth()`, `getNumberOfBands()`, and `getFrameType()` functions — see “Specifying the Format of the Image Data” on page 5-6.
- 2** Open a connection with your device in the `openDevice()` function — see “Opening and Closing Connection with a Device” on page 5-11.
- 3** Start acquiring data in the `startCapture()` function — see “Starting and Stopping Image Acquisition” on page 5-16.
- 4** Stop acquiring data in the `stopCapture()` function — see “Starting and Stopping Image Acquisition” on page 5-16.
- 5** Close the connection with the device in the `closeDevice()` function — see “Opening and Closing Connection with a Device” on page 5-11.

The following diagram shows this flow of control in graphical form. This diagram picks up where the diagram in Chapter 3 ends, after the object has been created — see “Acquiring Image Data” on page 5-2.

---

**Note** The diagrams do not show the calls your adaptor makes to the image acquisition device's SDK because these calls vary with each device's SDK.

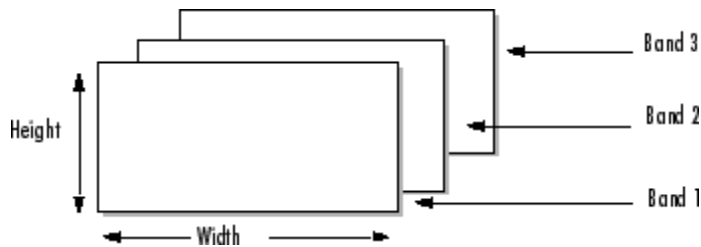
---



**Flow of Control among the Adaptor Acquisition Functions**

## Specifying the Format of the Image Data

Before you can acquire data from your device, you must tell the engine the format of the data it can expect to receive from your device. Without this information, the engine does not know how to interpret the data. For example, the engine needs to know the size of the bytes used to store image data, the length of each line and the total number of lines in each image frame, and the number of planes, or bands, in each image frame. (e.g. RGB data has three bands). The following figure illustrates this information.



In some cases, this format information is determined by external standards, such as the RS-170/NTSC standard. In other cases, device vendors define many different formats, described in the documentation that comes with the device. Adaptor writers decide which of these supported formats they want to make available to users of their adaptor in their `getAvailHW()` function, described in “Storing Format Information” on page 3-12.

This section describes how you specify format information in your adaptor after using the adaptor class virtual functions.

- “Specifying Image Dimensions” on page 5-6
- “Specifying Frame Type” on page 5-8

### Specifying Image Dimensions

You specify the dimensions of the image data a device outputs using the following virtual functions.

- `getMaxHeight()` — Returns an integer that specifies the maximum height of the image data.

- `getMaxWidth()` — Returns an integer that specifies the maximum width of the image data.
- `getNumberOfBands()` — Returns an integer that specifies the number of dimensions in the data. For example, RGB formats use three bands.

The engine calls these functions in your adaptor to get the resolution information that it displays in the `VideoResolution` property of the video input object.

```
vid = videoinput('mydeviceimaq');

get(vid, 'VideoResolution')

ans =
```

```
    640    480
```

Your adaptor also call these functions when it creates the `IAdaptorFrame` object to receive image data. See “Implementing the Acquisition Thread Function” on page 5-20 for more information.

### Suggested Algorithm

The `getMaxHeight()`, `getMaxWidth()`, and `getNumberOfBands()` functions in an adaptor typically perform the following processing:

- 1 Determine the format specified by the user when they created the video input object. The engine passes this information as an argument to your adaptor’s `createInstance()` function.
- 2 Based on the format chosen, return the appropriate values of the height, width, or number of bands. Your adaptor can accomplish this in many ways. One way, illustrated by the demo adaptor, is to determine these values in your `getAvailHW()` function and store the information in application data in the `IDeviceFormat` object — see “Defining Classes to Hold Device-Specific Information” on page 3-17. Then, the `getMaxHeight()`, `getMaxWidth()`, and `getNumberOfBands()` functions can retrieve this application data and read these values.

### Example

The following implementations of the `getMaxHeight()` and `getMaxWidth()` functions determine the value based on the format specified by the user. The number of bands depends on whether the format is color or monochrome. For color formats, such as RGB and YUV, the number of bands is always 3. For monochrome (black and white) formats, the number of bands is always 1. The Image Acquisition Toolbox software only supports image data with 1 or 3 bands.

Replace the stub implementations in the example adaptor with the following code C++ file, `mydevice.cpp`, created in Chapter 3. The values are appropriate for the format names specified in the example in “Specifying Device and Format Information” on page 3-8.

```
int MyDeviceAdaptor::getMaxHeight() const{
    if(strcmp(_formatName, "RS170"){
        return 480;
    } else {
        return 576;
    }
}

int MyDeviceAdaptor::getMaxWidth() const {
    if(strcmp(_formatName, "RS170"){
        return 640;
    } else {
        return 768;
    }
}

int MyDeviceAdaptor::getNumberOfBands() const {

    return 1;
}
```

### Specifying Frame Type

In addition to the image frame dimensions, you must provide the engine with information about the byte layout of the image data. Byte layout includes the number of bits used to represent pixel values, whether the data is signed or unsigned, the endianness of the data, and whether the device sends the bottom row first.



To specify this information, you must select one of the `FRAMETYPE` enumerations defined by the adaptor kit. The adaptor kit defines enumerations for many different frame types to represent the wide variety of formats supported by devices. For example, if your device is a monochrome (black and white) device that returns 8-bit data, you might choose the `MON08` frame type. If your device is a color device that returns 24-bit data, you might choose the `RGB24` frame type. The following table summarizes the frame types that are available. To choose a specific format, view the list in the Image Acquisition Toolbox Adaptor Kit API Reference documentation or open the `AdaptorFrameTypes.h` file.

<b>Format</b>	<b>Frame Types</b>
Monochrome	<p>8-, 10-, 12-, and 16-bit formats; both little-endian and big-endian; in regular and flip formats. (In flip formats, the device delivers the bottom line first.)</p> <p>Signed 16- and 32-bit formats; both little-endian and big-endian; in regular and flip formats.</p> <p>Floating-point and double formats; both little-endian and big-endian formats; in regular and flip formats.</p>
Color	<p>8-, 24-, 32-, and 48-bit RGB formats; both little-endian and big-endian; regular and flip; packed and planar (see “Understanding Packed and Planar Formats” on page 5-10).</p> <p>Frame types that specify the order of the bytes of color data (RGB or GBR) and specify where the blank byte is located (XRGB or XGBR).</p> <p>Formats that represent colors in 4-bits (4444), 5-bits (555), 5- or 6-bits (565), or 10-bits (101010).</p> <p>Formats that use the YUV color space.</p>

### **Suggested Algorithm**

Your adaptor’s `getFrameType()` function must return the appropriate frame type that describes the data returned by your device for the specified format.

If your device supports multiple color formats, you do not need to expose all the formats to toolbox users. You can simply provide one color format and handle the low-level details in your adaptor with `FRAMETYPE`.

### Example

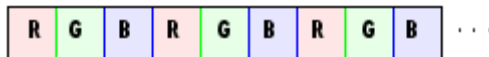
The following example shows a skeletal implementation of the `getFrameType()` function. An actual implementation might select the frame type based on the format the user selected.

```
virtual imaqkit::frametypes::FRAMETYPE getFrameType() const {  
    return imaqkit::frametypes::FRAMETYPE:MONO8;  
}
```

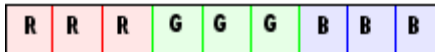
### Understanding Packed and Planar Formats

The adaptor kit `IAdaptorFrame` class defines many `FRAMETYPE` enumerations that cover the many possible types of image data devices can return. For example, some devices can return color images in packed or nonpacked (planar) formats. These formats describe how the bytes of red, green, and blue data are arranged in memory. In packed formats, the red, green, and blue triplets are grouped together. In nonpacked formats, all the red data is stored together, followed by all the green data, followed by all the blue data. The following figure illustrates this distinction.

Packed Format



Nonpacked (Planar) Format



### Packed and Planar Formats

To get more information about video formats, go to the [fourcc.org](http://fourcc.org) Web site.

## Opening and Closing Connection with a Device

Adaptors typically open a connection with the device in their `openDevice()` function and close the connection in their `closeDevice()` function. For most devices, opening a connection to the device reserves it for exclusive use. Closing the device releases the device.

---

**Note** The toolbox engine actually calls the `IAdaptor` class `open()` member function to open a connection with a device and the `close()` function to close a connection with a device. These function then call your adaptor's `openDevice()` and `closeDevice()` functions. If your adaptor needs to open or close a device, use the `open()` and `close()` functions, rather than calling `openDevice()` or `closeDevice()` directly.

---

### Suggested Algorithm for `openDevice()`

The `openDevice()` function typically performs the following tasks.

- 1 Test whether the device is already open by calling the `IAdaptor` class `isOpen()` function. If the device is already open, your `openDevice()` function should return `true`. If the device is not already open, your `openDevice()` function should establish a connection to the device using device SDK calls.
- 2 Start the acquisition thread. See “Starting an Acquisition Thread” on page 5-12 for more information.

---

**Note** Starting a separate thread is only required if your adaptor uses a thread-based design. Adaptors can also use asynchronous interrupts (callbacks) to acquire frames, if the device supports this. In this scenario, adaptors receive notification asynchronously when data is available. For information about using this method, refer to the documentation for your device's SDK.

---

## Starting an Acquisition Thread

To start an acquisition thread, use the Windows `CreateThread()` function. The `CreateThread()` function creates a thread that executes within the virtual address space of the calling process.

The `CreateThread()` function accepts these parameters.

```
HANDLE CreateThread(  
    LPSECURITY_ATTRIBUTES lpThreadAttributes,  
    SIZE_T dwStackSize,  
    LPTHREAD_START_ROUTINE lpStartAddress,  
    LPVOID lpParameter,  
    DWORD dwCreationFlags,  
    LPDWORD lpThreadId  
);
```

For an adaptor, the following table lists the parameters you must set. For complete information about creating a thread, see the documentation at the Microsoft Developer Network Web site ([msdn.microsoft.com](http://msdn.microsoft.com)).

Parameter	Description
<code>lpStartAddress</code>	Address of the acquisition thread procedure. Specify the name of the thread procedure declared in your adaptor class header file. See “Implementing the Acquisition Thread Function” on page 5-20.
<code>lpParameter</code>	Pointer to the object itself, i.e., the <code>this</code> pointer.
<code>lpThreadId</code>	Address of a variable in which the <code>CreateThread()</code> function returns the ID assigned to the newly created thread

After you call the `CreateThread()` function, applications typically call the `PostThreadMessage()` function to send a message to the new thread. This causes the system to create a message queue for the thread. Enter a loop to wait until the thread acknowledges the message was received to ensure that the thread queue has been created. Your adaptor terminates the thread in your adaptor’s `closeDevice()` function — see “Suggested Algorithm for `closeDevice()`” on page 5-14.

## Example: Opening a Connection

This example shows a skeletal implementation of an `openDevice()` function.

- 1 Replace the stub implementation of the `openDevice()` function in the `MyDevice` adaptor with this code.

```
bool MyDeviceAdaptor::openDevice()
{
    // If device is already open, return true.
    if (isOpen())
        return true;

    // Create the image acquisition thread.
    _acquireThread = CreateThread(NULL,
                                  0,
                                  acquireThread,
                                  this,
                                  0,
                                  &_acquireThreadID);
    if (_acquireThread == NULL) {
        closeDevice();
        return false;
    }

    // Wait for thread to create message queue.
    while(PostThreadMessage(_acquireThreadID,WM_USER+1,0,0) == 0)
        Sleep(1);

    return true;
}
```

- 2 To be able to compile and link your adaptor, you must create a stub implementation of your `acquireThread()` function and add it to your adaptor. You can fill in the complete implementation later — see “Implementing the Acquisition Thread Function” on page 5-20.

```
DWORD WINAPI MyDeviceAdaptor::acquireThread(void* param) {
    MSG msg;
    while (GetMessage(&msg,NULL,0,0) > 0) {
```

```
        switch (msg.message) {
            case WM_USER:

                // The frame acquisition loop code goes here.
                imaqkit::adaptorWarn('in acquire thread function \n');

            } // end switch
        } // end while

        return 0;
    } // end acquireThread
```

- 3** Add declarations of the `acquireThread()` function, the `acquireThread` variable, and the `acquireThreadID` variable as private data members of your adaptor class header file. In this example, `MyDeviceAdaptor.h`.

```
private:
    // Declaration of acquisition thread function
    static DWORD WINAPI acquireThread(void* param);

    // Thread variable
    HANDLE _acquireThread;

    // Thread ID returned by Windows.
    DWORD _acquireThreadID;
```

- 4** Compile and link your adaptor. You should be able to create a video input object. When you call the `start` function, verify that your adaptor successfully created the acquisition thread.

### **Suggested Algorithm for `closeDevice()`**

The `closeDevice()` function typically performs the following tasks.

- 1** Test whether the device is already closed. If it is, exit.
- 2** Post a message to the acquisition thread to quit and wait until it returns before exiting, for adaptors with thread-based designs. For more information about posting a message to the thread, see “Sending a Message to the Acquisition Thread” on page 5-17.

- 3 Close the handle associated with the acquisition thread and reset the thread handle variable to NULL.

### **Example: Closing the Connection with a Device**

The example shows a skeletal implementation of the `closeDevice()` function.

```
bool MyDeviceAdaptor::closeDevice(){  
  
    // If the device is not open, return.  
    if (!isOpen())  
        return true;  
  
    // Terminate and close the acquisition thread.  
    if (_acquireThread) {  
        // Send WM_QUIT message to thread.  
        PostThreadMessage(_acquireThreadID, WM_QUIT, 0, 0);  
  
        // Give the thread a chance to finish.  
        WaitForSingleObject(_acquireThread, 10000);  
  
        // Close thread handle.  
        CloseHandle(_acquireThread);  
        _acquireThread = NULL;  
    }  
    return true;  
}
```

## Starting and Stopping Image Acquisition

Once `openDevice()` returns successfully, the engine calls your adaptor's `startCapture()` function to start acquiring data.

The engine calls your adaptor's `stopCapture()` function when a user calls the `stop` or `closepreview` function on a video input object, or when the specified number of frames has been acquired and the acquisition is complete. For example,

```
vid = videoinput('winvideo',1);  
set(vid,'FramesPerTrigger',1000); //  
start(vid);  
stop(vid);
```

### Suggested Algorithm for `startCapture()`

The `startCapture()` function typically performs the following tasks.

- 1 Check whether an acquisition is already occurring, using the `IAdaptor` member function `isAcquiring()`. If it is, exit.
- 2 Send a message to the acquisition thread, using the Windows `PostThreadMessage()` function, telling it to begin acquiring image frames from the device. See “Sending a Message to the Acquisition Thread” on page 5-17 for more information.

---

**Note** Sending a start message to the acquisition thread is only required if your adaptor uses a thread-based design. Adaptors can also use asynchronous interrupts (callbacks) to acquire frames, if the device supports this. Refer to the documentation that came with your device's SDK for more information.

---

The `startCapture()` function also typically makes sure that the latest image acquisition object properties are used (see “Implementing Get and Set Support for Device-Specific Properties” on page 6-11), and configures hardware triggers, if supported and set (see “Supporting Hardware Triggers” on page 5-30).



## Sending a Message to the Acquisition Thread

To send a message to a thread, use the Windows `PostThreadMessage()` function. The adaptor's acquisition thread function uses the Windows `GetMessage()` function to receive these messages — see “Example: Opening a Connection” on page 5-13.

The `PostThreadMessage()` function accepts these parameters:

```
BOOL PostThreadMessage( DWORD idThread,
                       UINT Msg,
                       WPARAM wParam,
                       LPARAM lParam
                     );
```

The following table describes how to set these parameters for an adaptor. For more information about sending thread messages, see the documentation at the Microsoft Developer Network Web site ([msdn.microsoft.com](http://msdn.microsoft.com)).

Parameter	Description
<code>idThread</code>	Identifier of the thread to which the message is to be posted, returned by <code>CreateThread()</code> .
<code>Msg</code>	Message to be posted. Microsoft defines a range of values for user messages, beginning with the value <code>WM_USER</code> .
<code>wParam</code>	Additional message-specific information
<code>lParam</code>	Additional message-specific information

### Example: Initiating Acquisition

This example illustrates a simple `startCapture()` function. This function takes no arguments and returns a Boolean value indicating whether the video input object is in start state.

- 1 Replace the stub implementation in the `MyDeviceAdaptor.cpp` file with this code and then rebuild your adaptor.

```
bool MyDeviceAdaptor::startCapture(){
    // Check if device is already acquiring frames.
```

```
    if (isAcquiring())
        return false;

    // Send start message to acquisition thread
    PostThreadMessage(_acquireThreadID, WM_USER, 0, 0);

    return true;
}
```

- 2 Start the MATLAB software and run your adaptor to verify that your acquisition thread gets the start message from `startCapture()`.

### Suggested Algorithm for `stopCapture()`

The `stopcapture()` function typically performs these tasks.

- 1 Checks whether the adaptor is already stopped by calling the `isAcquiring()` function. If the device is not currently acquiring data, return `true`.
- 2 Stops the frame acquisition loop and stops the device, if necessary

---

**Note** It is important not to exit the `stopCapture()` function while the acquisition thread function is still acquiring frames. One way to do this is to try to acquire a critical section. When you are able to acquire the critical section, you can be sure that the frame acquisition loop has ended, giving up its critical section.

---

### Example

The following example illustrates a simple `stopCapture()` function. This function takes no arguments and returns a Boolean value indicating whether the video input object is in stopped state. Replace the stub implementation in the `MyDeviceAdaptor.cpp` file with this code and then rebuild your adaptor.

```
bool MyDeviceAdaptor::stopCapture(){

// If the device is not acquiring data, return.
    if (!isOpen())
```

```
        return true;

//*****
// Insert calls to your device's SDK to stop the device, if
// necessary.
//*****

    return true;
}
```

The `stopCapture()` function in the demo adaptor provides another example of how to stop the frame acquisition loop. The adaptor defines a flag variable that it checks each time it enters the frame acquisition loop. To break out of the frame acquisition loop, the demo adaptor sets this flag variable to false. See the demo adaptor source code for more details.

## Implementing the Acquisition Thread Function

This section describes how to implement your adaptor's acquisition thread function. In a threaded adaptor design, the acquisition thread function performs the actual acquisition of frames from the device. When you create the thread ("Opening and Closing Connection with a Device" on page 5-11), you specify the name of this acquisition thread function as the starting address for the new thread.

### User Scenario

The toolbox engine invokes the acquisition thread function indirectly when a user calls the `start`, `getsnapshot`, or `preview` function. Once called, the acquisition thread function acquires frames until the specified number of frames has been acquired or the user calls the `stop` function.

### Suggested Algorithm

---

**Note** The design of the acquisition thread function can vary significantly between various adaptors, depending on the requirements of the device's SDK. This section does not describe device-dependent implementation details but rather highlights required tasks that are common to all implementations.

---

At its highest level, in a threaded design, an acquisition thread function typically contains two loops:

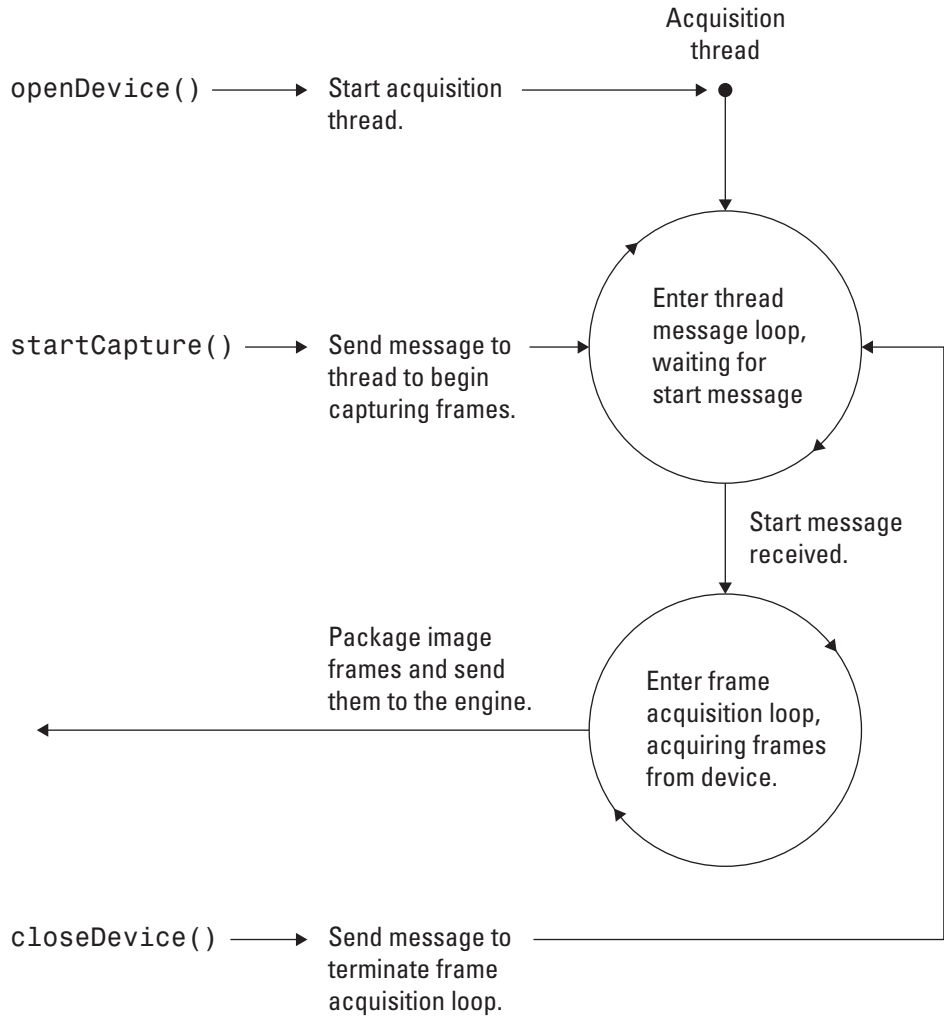
- "Thread Message Loop" on page 5-20
- "Frame Acquisition Loop" on page 5-22

### Thread Message Loop

The thread message loop is the main processing loop in the acquisition thread function. You create the thread in the `openDevice()` function. The acquisition thread function enters the thread message loop, waiting for the message to start acquiring frames. Your adaptor's `startCapture()` function sends the message to the acquisition thread, telling it to start acquiring frames. This

example uses the `WM_USER` message to indicate this state. See “Sending a Message to the Acquisition Thread” on page 5-17 for more information.

When it receives the appropriate message, the acquisition thread function enters the frame acquisition loop. The following figure illustrates this interaction between your adaptor functions and the acquisition thread. For information about the frame acquisition loop, see “Frame Acquisition Loop” on page 5-22.



**Interaction of Adaptor Functions and Acquisition Thread**

**Frame Acquisition Loop**

The frame acquisition loop is where your adaptor acquires frames from the device and sends them to the engine. This process involves the following steps:

- 1** Check whether the specified number of frames has been acquired. The frame acquisition loop acquires frames from the device until the specified number of frames has been acquired. Use the `IAdaptor` member function `isAcquisitionNotComplete()` to determine if more frames are needed.
- 2** If your adaptor supports hardware triggers, you would check whether a hardware trigger is configured here — “Supporting Hardware Triggers” on page 5-30.
- 3** Grab a frame from the device. This code is completely dependent on your device SDK’s API. With many device SDKs, you allocate a buffer and the device fills it with image data. See your device’s API documentation to learn how to get frames from your device.
- 4** Check whether you need to send the acquired frame to the engine, using the `IAdaptor` member function `isSendFrame()`. This is how the toolbox implements the `FrameGrabInterval` property, where users can specify that they only want to acquire every other frame, for example.

If you need to send a frame to the engine, package the frame in an `IAdaptorFrame` object; otherwise, skip to step 5.

- a** Create a frame object, using the `IEngine` object `makeFrame()` member function. You must specify the image frame dimensions and frame type when you create the frame object.
- b** Put the acquired image data into the frame object, using the `IAdaptorFrame` object `setImage()` member function. You specify a pointer to the buffer that contains the image data, the frame width and height and any offsets from the upper left corner of the image.

---

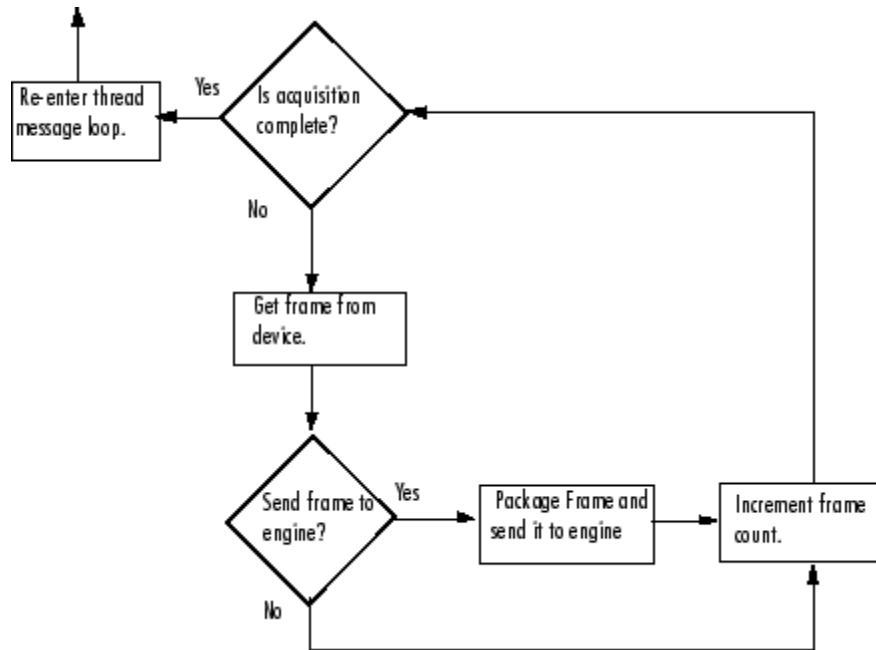
**Note** For information about specifying frame width, height, and offset with ROIs, see “Supporting ROIs” on page 5-27.

---

- c** Log the time of the acquisition in the frame object, using the `IAdaptorFrame` member function `setTime()`. Device SDKs sometimes provide access to time stamp information, but you can also use the adaptor kit `getCurrentTime()` function.

- d Send the packaged frame to the engine, using the IEngine member function `receiveFrame()`.
- 5 Increment the frame count using the IAdapter member function `incrementFrameCount()`. Whether you need to send a frame or not, you must always increment the frame count whenever you acquire a frame.
- 6 Return to the top of the frame acquisition loop.

The following figure illustrates the frame acquisition loop.



### A Possible Algorithm for the Frame Acquisition Loop

### Example

The following is a declaration of an acquisition thread function. You can give your acquisition thread procedure any name, such as `acquireThread()`.

```
DWORD WINAPI acquireThread(void* ThreadParam);
```



Your thread function must accept a single parameter, which is defined as a pointer to the object itself, i.e., the `this` pointer. The thread function returns a value that indicates success or failure. For more information, see the documentation at the Microsoft Developer Network Web site ([msdn.microsoft.com](http://msdn.microsoft.com)).

The following is an acquisition thread function that you can use with the example `MyDeviceAdaptor`. Replace the skeletal implementation you used in “Starting an Acquisition Thread” on page 5-12 with this code.

```
DWORD WINAPI MyDeviceAdaptor::acquireThread(void* param) {

MyDeviceAdaptor* adaptor = reinterpret_cast<MyDeviceAdaptor*>(param);

MSG msg;
while (GetMessage(&msg,NULL,0,0) > 0) {
    switch (msg.message) {
        case WM_USER:
            // Check if a frame needs to be acquired.
            while(adaptor->isAcquisitionNotComplete()) {

                // Insert Device-specific code here to acquire frames
                // into a buffer.

                if (adaptor->isSendFrame()) {

                    // Get frame type & dimensions.
                    imaqkit::frametypes::FRAMETYPE frameType =
                        adaptor->getFrameType();
                    int imWidth = adaptor->getMaxWidth();
                    int imHeight = adaptor->getMaxHeight();

                    // Create a frame object.
                    imaqkit::IAdaptorFrame* frame =
                        adaptor->getEngine()->makeFrame(frameType,
                                                            imWidth,
                                                            imHeight);

                    // Copy data from buffer into frame object.
                    frame->setImage(imBuffer,
```

```
        imWidth,
        imHeight,
        0, // X Offset from origin
        0); // Y Offset from origin

    // Set image's timestamp.
    frame->setTime(imaqkit::getCurrentTime());

    // Send frame object to engine.
    adaptor->getEngine()->receiveFrame(frame);
} // if isSendFrame()

// Increment the frame count.
adaptor->incrementFrameCount();

} // while(isAcquisitionNotComplete())

    break;
} //switch-case WM_USER
} //while message is not WM_QUIT

return 0;
}
```

## Supporting ROIs

The toolbox supports the specification of regions of interest (ROIs) in both software and hardware. The following sections provide more information.

In this section...
“Implementing Software ROI” on page 5-27
“Implementing Hardware ROI” on page 5-29

### Implementing Software ROI

When using a software ROI, a toolbox user sets the dimensions of the ROI in the `ROIPosition` property. The device returns the entire image frame. Your adaptor specifies the ROI dimensions when it creates the `Frame` object to package up the image data.

#### User Scenario

Users set the value of the `ROIPosition` property to specify an ROI. Users specify the value as a four-element vector in the form:

```
[Xoffset Yoffset Width Height]
```

The  $x$ - and  $y$ -offsets define the position of the ROI in relation to the upper left corner of the image frame. For more information about this property, see the `Image Acquisition Toolbox` documentation.

#### Suggested Algorithm

To support software ROI, your adaptor must check the value of the `ROIposition` property before creating the frame object because you need to specify the ROI dimensions when you create the frame. This is typically done in the `openDevice()` or `startCapture()` functions.

In your frame acquisition loop, insert the following call to the `IAdaptor` function `getROI()`. Then, use the ROI width and height values when you create the `IAdaptorFrame` object, rather than the full image height and width returned by the device.

---

**Note** You use the ROI width and height when you create the frame but you use the full image width and height when you copy the image data from the buffer into the frame object.

---

### Example

The following is a version of the `isSendFrame()` loop in the acquisition thread function that checks the ROI. Note that you call the `getROI()` function to get the ROI values, and then use the width and height values in the call to `makeFrame()` and the offsets from the origin in the call to `setImage()`.

```
if (adaptor->isSendFrame()) {

    // Get ROI information.
    int roiOriginX, roiOriginY, roiWidth, roiHeight;
    adaptor->getROI(roiOriginX,
                  roiOriginY,
                  roiWidth,
                  roiHeight);

    // Get frame type & dimensions
    imaqkit::frametypes::FRAMETYPE frameType =
        adaptor->getFrameType();
    int imWidth = adaptor->getMaxWidth();
    int imHeight = adaptor->getMaxHeight();

    // Create a frame object
    imaqkit::IAdaptorFrame* frame =
    adaptor->getEngine()->makeFrame(frameType,
                                   roiWidth,    // ROI width
                                   roiHeight); // ROI height

    // Copy data from buffer into frame object
    frame->setImage(imBuffer,
                  imWidth, // Full image width
                  imHeight, // Full image height
                  roiOriginX, // ROI origin
                  roiOriginY); // ROI origin
```

```
// Set image's timestamp
frame->setTime(imaqkit::getCurrentTime());
// Send frame object to engine.
adaptor->getEngine()->receiveFrame(frame);

} // if isSendFrame()
```

## Implementing Hardware ROI

For hardware ROI, the user defines the ROI on the device. The device returns only the data in the specified ROI.

To implement hardware ROI, you must overload both the `IAdaptor`'s `getROI()` and `setROI()` member functions in your implementation of your adaptor class. By default, if the `IAdaptor` object's `getROI()` member function is not overloaded, ROI configurations will be handled in software by `imaqkit::IEngine`.

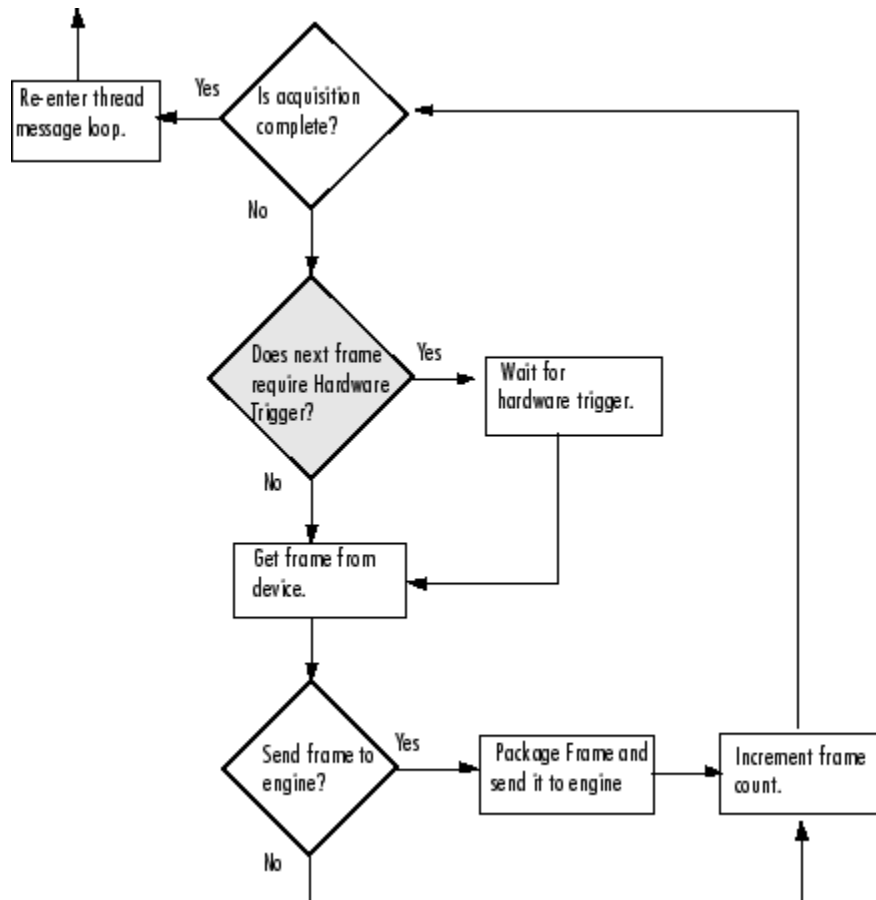
### Supporting Hardware Triggers

The toolbox supports three types of triggers:

- Immediate — Trigger fires when video input object is started.
- Manual — Trigger fires when user calls `trigger` function.
- Hardware — Trigger fires when externally defined conditions are met

The engine provides automatic support for immediate and manual triggers. If you want your adaptor to support hardware triggers you must check to see if users have specified a hardware trigger in your acquisition thread function. Before you start acquiring frames from your device, insert a call to the `IAdaptor` member function `useHardwareTrigger()` to determine if the frame acquisition loop should wait for a hardware trigger to fire. If a hardware trigger is configured, insert device SDK calls required to wait for trigger.

The following figure illustrates the frame acquisition loop with the test for hardware trigger.



**Main Acquisition Loop with Test for Hardware Trigger**

## Example

The following is an acquisition thread function that includes a call to check for hardware trigger.

```

while(adaptor->isAcquisitionNotComplete()) {

    // Check for hardware trigger
    if (adaptor->useHardwareTrigger()) {

```

```
        // Add code here to configure the image
        // acquisition device for hardware
        // triggering.
    }

    if (adaptor->isSendFrame()) {

        // see acquisition thread

    } // if isSendFrame()

    // Increment the frame count.
    adaptor->incrementFrameCount();

    } // while(isAcquisitionNotComplete())

        break;
    } //switch-case WM_USER
} //while message is not WM_QUIT

return 0;
}
```



## Using Critical Sections

This section describes how to use critical sections to protect portions of your adaptor code. The section describes the adaptor kit's main critical section class, `ICriticalSection`, and the ancillary class, `IAutoCriticalSection`, that you use to manage critical sections. Topics covered include

- “Understanding Critical Sections” on page 5-33
- “Example: Using a Critical Section” on page 5-34

### Understanding Critical Sections

To prevent sections of code or resources from being accessed simultaneously by multiple threads, use critical section (`ICriticalSection`) objects. The basic process for using a critical section has three-steps:

- 1** Create a critical section object, using the adaptor kit `createCriticalSection()` function.
- 2** At the point in your code that you want to protect, enter the critical section by calling the `ICriticalSection::enter()` member function.
- 3** At the end of the code that you want to protect, leave the critical section by calling the `ICriticalSection::leave()` member function.

While this process might appear simple, using a `ICriticalSection` object directly in this way can expose your adaptor to problems. For example, if an error occurs in the protected code, the call to the `leave()` function might never be executed. Entering a critical section and then never leaving it can cause unexpected results.

To make working with critical sections easier, the adaptor kit provides a second class, called `IAutoCriticalSection`, that can help you manage the critical sections you define.

You first create an `ICriticalSection` object and then pass this object to the `createAutoCriticalSection()` function when you create the `IAutoCriticalSection` object. When you create the object, you automatically enter the critical section without having to call the `enter()` function. When the protected code goes out of scope, the auto critical section automatically

leaves the critical section without your code having to call the `leave()` function.

The auto critical section object ensures that you always exit a critical section. However, you must also ensure that the auto critical section itself gets deleted. To do this, the adaptor kit recommends managing the handle to the `IAutoCriticalSection` object, returned by `createAutoCriticalSection()`, as an `auto_ptr` using the `std::auto_ptr<>` template class from the Standard Template Library. The `auto_ptr` helps ensure that the `IAutoCriticalSection` handle is deleted.

## Example: Using a Critical Section

To define a section of code as a critical section, follow this procedure.

- 1 Create an `ICriticalSection` object, using the `createCriticalSection()` function. Adaptors typically create an `ICriticalSection` object in their constructors — see “Implementing Your Adaptor Class Constructor” on page 4-14.

```
_mySection = imaqkit::createCriticalSection();
```

The function returns a handle to an `ICriticalSection` object. `_mySection`, which is declared as a member variable in the adaptor class header file, as follows.

```
imaqkit::ICriticalSection* _mySection;
```

- 2 At the point in your code that you want to protect, create an `IAutoCriticalSection` object. The `IAutoCriticalSection` class guarantees that the critical section objects are released when the protected code goes out of scope, or if an exception occurs. In an adaptor, you typically want to protect the frame acquisition loop in a critical section. Insert this code in the acquisition thread function, just before the frame acquisition loop — see “Implementing the Acquisition Thread Function” on page 5-20.

```
std::auto_ptr<imaqkit::IAutoCriticalSection>  
myAutoSection(imaqkit::createAutoCriticalSection(adaptor->_mySection,  
true));
```

In this code, the variable `myAutoSection` is a handle to an `IAutoCriticalSection` object, that is managed as a Standard Template Library `auto_ptr`. The code passes a handle to an `ICriticalSection` object, `_mySection`, as an argument to the `createAutoCriticalSection()` function. The second argument to `createAutoCriticalSection()` specifies that the adaptor should enter the critical section automatically upon creation of the `IAutoCriticalSection`.

- 3** At the end of the code that you want to protect, leave the critical section. In an adaptor, you want to leave the critical section after the frame acquisition loop is done. Insert this code just before the acquisition thread function breaks out of the frame acquisition loop — see “Implementing the Acquisition Thread Function” on page 5-20.

You can use the `IAutoCriticalSection::leave()` function but this is not necessary. The `IAutoCriticalSection` leaves the critical section automatically when the code section goes out of scope. You might want to include explicit calls to the `leave()` function in your code to help document the extent of your critical section.

```
bool MyDeviceAdaptor::stopCapture(){

// If the device is not acquiring data, return.
    if (!isAcquiring())
        return true;

// Get the critical section and enter it.

    std::auto_ptr<imaqkit::IAutoCriticalSection>
    GrabSection(imaqkit::createAutoCriticalSection(_grabSection,
                                                    true));

//*****
// Insert calls to your device's SDK to stop the device, if
// necessary.
//*****

// Leave the critical section.

    GrabSection->leave();
```

```
        return true;  
    }
```

## Specifying Device Driver Identification Information

Two of the virtual functions you must implement return identification information about the device driver used to communicate with your device. This information can be useful for debugging purposes.

- `getDriverDescription()` — Returns a text string that identifies the device.
- `getDriverVersion()` — Returns a text string that specifies the version of the device driver.

Adaptors typically use an SDK function to query the device to get this information, if the SDK supports it, or obtain the information from the device documentation.

### User Scenario

The identification text strings returned by `getDriverDescription()` and `getDriverVersion()` are visible to users if they call `imaqhwinfo`, specifying a video input object as an argument, as follows.

```
vid = videoinput('mydeviceimaq');

imaqhwinfo(vid)
ans =

        AdaptorName: 'mydeviceimaq'
        DeviceName: 'MyDevice'
        MaxHeight: 280
        MaxWidth: 120
        TotalSources: 1
        VendorDriverDescription: 'MyDevice_Driver'
        VendorDriverVersion: '1.0.0'
```

### Example

The following example contains skeletal implementations of the `getDriverDescription()` and `getDriverVersion()` functions.

```
const char* MyDeviceAdaptor::getDriverDescription() const{
```

```
        return "MyDevice_Driver";
    }

    const char* MyDeviceAdaptor::getDriverVersion() const {
        return "1.0.0";
    }
```

# Defining Device-Specific Properties

---

This chapter describes how to define the properties that toolbox users can use to configure various attributes of a device. These properties can control aspects of the image acquired, such as brightness, behavior of the device, such as shutter speed, and other device-specific characteristics.

- “Defining Device-Specific Properties” on page 6-2
- “Creating Device Properties” on page 6-6
- “Defining Hardware Trigger Configurations” on page 6-10
- “Implementing Get and Set Support for Device-Specific Properties” on page 6-11

## Defining Device-Specific Properties

You define which properties of your image acquisition device you want to expose to toolbox users. You make this determination by reading the device SDK documentation, determining its capabilities, and deciding which capabilities toolbox users will expect to configure. Once you decide to expose a property, define the following characteristics of the property:

- Name
- Data type
- Range of valid values (optional)

Adaptor writers typically wait to define properties until after they are able to acquire data from the device. To see the effect of some properties, you need to be able to acquire data.

### User Scenario

The properties that you define for your device appear to users as properties of the video source object associated with the video input object. The toolbox defines the properties of the video input object, which represent general properties that are common to all image acquisition devices.

To view the device-specific properties you define, get a handle to the video source object and use the `get` function. To set the value of device-specific properties you define, get a handle to the video source object and use the `set` function. For example, this code creates a video input object and uses the `getselectedsource` function to get a handle to the currently selected video source object. With this handle, you can then use the `get` command to view the properties of the video source object.

```
vid = videoinput('winvideo',1)
src = getselectedsource(vid);
get(src)
General Settings:
    Parent = [1x1 videoinput]
    Selected = on
    SourceName = input1
    Tag =
```



```
Type = videosource
```

```
Device Specific Properties:
```

```
Brightness = -10
Contrast = 266
Exposure = 1024
ExposureMode = auto
Hue = 0
Saturation = 340
Sharpness = 40
```

## Suggested Algorithm

When a user calls the `videoinput` function, the engine calls the `getDeviceAttributes()` function to set up any device-specific properties you have defined for the device. The engine passes several arguments to your adaptor's `getDeviceAttributes()` function:

```
void getDeviceAttributes(const imaqkit::IDeviceInfo* deviceInfo,
                        const char* acqFormat,
                        imaqkit::IPropFactory* devicePropFact,
                        imaqkit::IVideoSourceInfo* sourceContainer,
                        imaqkit::ITriggerInfo* hwTriggerInfo)
```

Argument	Data Type	Description
<code>deviceInfo</code>	Handle to a <code>IDeviceInfo</code> object	Specifies the image acquisition device
<code>acqformat</code>	Text string	Specifies the video format or the path to a device configuration file
<code>devicePropFact</code>	Handle to a <code>IPropFactory</code> object	Provides member functions used to create properties

Argument	Data Type	Description
sourceContainer	Handle to a <code>IVideoSourceInfo</code> object	Defines the video sources available with this device, described in “Identifying Video Sources” on page 4-11
hwTriggerInfo	Handle to a <code>ITriggerInfo</code> object	Specifies hardware triggers. The toolbox handles the other two trigger types (immediate and manual) automatically.

The algorithm for `getDeviceAttributes()` typically includes these steps:

- 1** Determine the device the user wants to establish a connection with, specified by device ID.
- 2** Determine the format the user wants to use with the device, specified by format name (or the path of a camera file). To get format information, retrieve the `IDeviceFormat` object associated with the format from the `IDeviceInfo` object.
- 3** Create any device-specific properties. You create a property object appropriate to the data type of the property and store the property object in the device-specific property container — see “Creating Device Properties” on page 6-6.
- 4** Find all trigger configurations supported by the device and store the information in the `ITriggerInfo` object — see “Supporting Hardware Triggers” on page 5-30.

There are several ways your adaptor can determine this property, source, and trigger information:

- By querying the device SDK at run-time
- By reading information from an imaging device file (IMDF). If you know the device information in advance, you can store it in an IMDF file using an XML-based markup language. This section describes how to read

information from an IMDF file. To learn how to create an IMDF file, see “Using the IMDF Markup Language” on page 7-2.

- A mixture of both methods.

## Creating Device Properties

To define properties for a device, follow this procedure:

- 1** Create the property using the appropriate `IPropFactory` member function for the data type. The engine passes in a handle to a `IPropFactory` object to the `getDeviceAttributes()` function.

For example, to create a property of type `double`, use the `createDoubleProperty()` method of the `IPropFactory` object, specifying the property name and default value as arguments.

```
hprop = devicePropFact->createDoubleProperty("Brightness",100)
```

The `IPropFactory` class supports functions to create properties of various data types — see “Selecting the Property Creation Function” on page 6-6.

- 2** Specify if a user can modify the property, using the `setPropReadOnly()` method of the `IPropFactory` object. Use one of the following constants (defined in `IEngine.h`): `READONLY_ALWAYS`, `READONLY_NEVER`, and `READONLY_WHILE_RUNNING`. For example,

```
devicePropFact->setPropReadOnly(hProp,  
                               imaqkit::propreadonly::READONLY_WHILE_RUNNING);
```

- 3** Add the property to the device-specific property container, using the `addProperty()` method of the `IPropFactory` object. For example,

```
devicePropFact->addProperty(hProp);
```

where `hProp` is a handle to the property you created in step 1.

### Selecting the Property Creation Function

The `IPropFactory()` object supports functions that you can use to create properties of various data types, including:

- `int`
- `double`
- `string`

- Enumerated types

For example, use the `createDoubleProperty()` function to create a property whose value is of type `double`.

```
hprop = devicePropFact->createDoubleProperty("MyDoubleProp", 2.5)
```

For the `int` and `double` types, you can also specify properties that have pairs of values or values within a defined range. For example, this code creates an integer property with upper and lower bounds.

```
hprop = devicePropFact->createIntProperty("MyBoundedIntProp",  
                                          0, 100, 50)
```

To create a property with enumerated values, use `createEnumProperty()`, specifying the property name, and one enumeration, for example,

```
hprop = devicePropFact->createEnumProperty("MyEnum",  
                                           "green", 1)
```

You then add additional properties using `addEnumValue()`.

For more information about the `IPropFactory` class, see the Image Acquisition Toolbox Adaptor Kit API Reference documentation.

## Creating Property Help

You can use IMDF files to define help text for the device-specific properties you create. For more information, see “Specifying Help in an IMDF File” on page 7-6.

## Example `getDeviceAttributes()` Function

The following example presents a skeletal implementation of a `getDeviceAttributes()` function. The intent of this example is to show how to use adaptor kit objects to specify video sources and properties of various types.

This code does not read source, property, or trigger information from an IMDF file. For information about this topic, see “Using the IMDF Markup Language” on page 7-2.

- 1 Add the following code to the `getDeviceAttributes()` function in the adaptor. You created a skeletal version of this function in “Identifying Video Sources” on page 4-11. This code creates several properties of various types.

```
void* hProp; // Declare a handle to a property object.

// Create a property of type double with a default value
hProp = devicePropFact->createDoubleProperty("MyDoubleProp",2.5);

// Specify when the property value can be modified.
devicePropFact->setPropReadOnly(hProp,
                                imaqkit::imaqengine::READONLY_ALWAYS);

// Add the property to the device-specific property container.
devicePropFact->addProperty(hProp);

// Create a bounded int property with maximum and minimum values
hProp = devicePropFact->createIntProperty("MyBoundedIntProp",
                                          0, 100, 50);

// Specify when the property value can be modified.
devicePropFact->setPropReadOnly(hProp,
                                imaqkit::imaqengine::READONLY_NEVER);

// Add the property to the device-specific property container.
devicePropFact->addProperty(hProp);

// Create an enumerated property
hProp = devicePropFact->createEnumProperty("MyEnumeratedProp",
                                          "green", 1);

// Add additional enumerations
devicePropFact->addEnumValue(hProp, "blue", 2);
devicePropFact->addEnumValue(hProp, "red", 3);
```

```
// Specify when the property value can be modified.
devicePropFact->setPropReadOnly(hProp,
                               imaqkit::imaqengine::READONLY_WHILE_RUNNING);

// Add the property to the device-specific property container.
devicePropFact->addProperty(hProp);
```

**2** Compile and link your adaptor to create the DLL.

**3** Start the MATLAB software.

**4** Create a video input object for your adaptor.

```
vid = videoinput('mydevice',1)
```

**5** Use the `getselectedsource` function to get a handle to the video source object and view the device-specific properties you created.

```
src = getselectedsource(vid);
get(vid)
General Settings:
    Parent = [1x1 videoinput]
    Selected = on
    SourceName = input1
    Tag =
    Type = videosource

Device Specific Properties:
    MyDoubleProp = 2.5
MyBoundedIntProp = 100
MyEnumeratedProp = green
```

# Defining Hardware Trigger Configurations

To define hardware trigger configurations, use the `addConfiguration()` function of the `ITriggerInfo` object. The engine passes a handle to an `ITriggerInfo` object to your adaptor's `getDeviceAttributes()` function.

When you create a hardware trigger configuration, you specify:

- Name of the source of the trigger
- ID of the trigger source
- Name of the condition that triggers an acquisition
- ID of the trigger condition

For example,

```
hwTriggerInfo->addConfiguration("MyTriggerSource", 1,  
                                "MyTriggerCondition",2)
```



## Implementing Get and Set Support for Device-Specific Properties

After connecting to a device through your adaptor, users might want to view or modify values of the properties of the device. For example, a user might adjust the value of the `Brightness` property or retrieve the current value of the `Temperature` property. (For information about how to define the properties you want to expose to users, see “Creating Device Properties” on page 6-6.)

To receive notification from the engine when a user wants to view or modify a property, associate a *listener* object with the property. The toolbox defines two types of listener classes: *get* listeners that respond to get commands and *set* listeners that respond to set commands.

To provide support for getting and setting property values, follow this procedure:

- 1 Define a listener class of the appropriate type. The toolbox defines two abstract classes, one for get listeners and one for set listeners, from which you derive your class.
- 2 Implement the virtual function required by the class.
- 3 Associate an instance of your listener class with the property.

The following sections describe how to set up get listeners and set listeners and in your adaptor.

### Setting Up Get Listeners in Your Adaptor

To receive notification from the engine when a user requests the current value of a property using the get command:

- 1 Define a get listener class, deriving it from the `IPropCustomGetFcn` abstract class—see “Defining a Get Listener Class” on page 6-12.
- 2 Implement the `getValue()` virtual function in your listener class—see “Creating the `getValue()` Function for Your Class” on page 6-13.

- 3 Associate an instance of your listener class with a property—see “Associating Get Listeners with Properties” on page 6-14.

### Defining a Get Listener Class

Create a get listener class, deriving it from the abstract class `IPropCustomGetFcn`, as shown in the following example.

In this example, the constructor accepts a handle to an `IAdaptor` object. Because the toolbox establishes listeners on a per-instance basis, passing this handle can be helpful, but it is not a requirement.

The `IPropCustomGetFcn` class defines one virtual function: the `getValue()` member function. In this function, you define how your adaptor responds when a user requests the current value of a property. For more information about the `getValue()` function, see “Creating the `getValue()` Function for Your Class” on page 6-13.

```
#include "mwadaptorimaq.h"
#include "MyDeviceImaq.h" // For this example

class MyDevicePropGetListener : public IPropCustomGetFcn
{
public:

    // Constructor/Destructor
    MyDevicePropGetListener(MyDeviceAdaptor* parent):
        _parent(parent) {}

    virtual ~MyDevicePropGetListener() {};

    virtual void getValue(imaqkit::IPropInfo* propertyInfo,
        void* value);

private:

    // Declare handle to parent as member data.
    MyDeviceAdaptor* _parent;

};
```

## Creating the `getValue()` Function for Your Class

When a user requests the current value of a property, the engine calls the `getValue()` function of the get listener class associated with the property.

Your `getValue()` function must accept two parameters:

```
void getValue(IPropInfo* propertyInfo, void* value)
```

- `propertyInfo` is a handle to an `IPropInfo` object.—The `IPropInfo` class is the interface that lets you get information about the property. For example, using `IPropInfo` functions you can retrieve the property name, its storage type and its default value. This information is useful if you have a generic listener class that handles multiple properties.
- `value` is a pointer to the location in memory where your adaptor stores the requested property value.—The engine passes this value as a `void*`. Your `getValue()` function must cast the value to the appropriate C++ data type. The following table tells which C++ data type to cast to for all property types supported by the adaptor kit.

<b>imaqkit::PropertyTypes</b>	<b>C++ Data Type</b>
STRING	char**
DOUBLE	double*
INT	int*
DOUBLE_ARRAY	imaqkit::PropertyTypes::NDoubles*
INT_ARRAY	imaqkit::PropertyTypes::NInts*

For nonscalar data types, strings, double arrays, and integer arrays, your listener class must allocate sufficient memory for the current property value using the `new[]` operator. The engine deletes this memory, calling `delete[]`. An example using a string property is:

```
char** returnStr = reinterpret_cast<char**>(value);
*returnStr = imaqkit::imaqmalloc(sizeof(char) * (stringLength));
strcpy(*returnStr, currentPropertyValueString);
```

**Suggested Algorithm for a `getValue()` Function.** The design of the `getValue()` function varies with the needs of your device and the facilities offered by its SDK. For example, you could create one get listener class that handles value queries for all properties in a particular property container (general or device-specific). In this case, the `getValue()` function includes a switch statement with cases that handle each individual property.

Alternatively, define a separate get listener class for each property or each property storage type. Then, the engine calls the specific listener for the property specified.

You also can define get listener classes that fit the way the device SDK organizes property configuration. For example, if an SDK provides one function to configure all device properties, you can define a get listener class for these properties.

**Example.** This example shows an implementation of a `getValue()` function for integer types:

```
void MyDevicePropGetListener::getValue(IPropInfo* propertyInfo,
                                       void* value)
{
    // Get property name from the IPropInfo object.
    const char* propName = propertyInfo->getPropertyName();

    // Get the value using whatever facility your device's SDK provides.
    *reinterpret_cast<const int*>(value) = sdk_function_get();

    // For debug purposes only.
    imaqkit::adaptorWarn("In listener. Property name is %s\n",propName);
}
```

### Associating Get Listeners with Properties

To set up a listener for a property, you associate the listener object with the property in the property container. The following example shows how to add get listeners for all device-specific properties in the adaptor property container. Adaptor writers typically set up property listeners in their adaptor

class constructor—see “Implementing Your Adaptor Class Constructor” on page 4-14.

**1** Get a handle to the appropriate property container object.

The IEngine object has two member functions that return handles to property containers (IPropContainer objects). The example calls the IEngine class getAdaptorPropContainer() member function to get the device-specific property container:

```
imaqkit::IPropContainer* adaptorPropContainer =
    getEngine()->getAdaptorPropContainer();
```

**2** Add a get listener to a property in the container, using the IPropContainer object setCustomGetFcn() function. As arguments, specify the property name and a handle to the listener object.

---

**Note** Because the toolbox deletes each instance of a listener object when a user deletes the video input object, associate a new instance of a listener object with each property.

---

The following example iterates through all properties in the adaptor property container, associating a get listener object with each one.

```
void MyDeviceAdaptor::MyDeviceAdaptor()
{
    // get a handle to the property container
    IPropContainer* propContainer =
        getEngine()->getAdaptorPropContainer();

    // Determine the number of properties in the container.
    int numDeviceProps = propContainer->getNumberProps();

    // Retrieve the names of all the properties in the container
    const char **devicePropNames = new const
        char*[numDeviceProps];
    propContainer->getPropNames(devicePropNames);
```

```
// Create a variable to point to a property get listener object.
MyDevicePropGetListener* getListener;

// For each property in the container...
for (int i = 0; i < numDeviceProps; i++){

    // Create a get listener object...
    getListener = new MyDevicePropGetListener(this);

    // and associate it with a specific property.
    propContainer->setCustomGetFcn(devicePropNames[i], getListener);
}

// clean up the array of property names.

delete [] devicePropNames;

}
```

### Setting Up Set Listeners in Your Adaptor

To receive notification from the engine when a user changes the value of a property using the set command:

- 1 Define a set listener class, deriving it from the `IPropPostSetListener` abstract class—see “Defining a Set Listener Class” on page 6-16.
- 2 Implement the `notify()` virtual function in your set listener class—see “Creating the `notify()` Function for Your Class” on page 6-18.
- 3 Associate an instance of your set listener class with the property—see “Associating Set Listeners with Properties” on page 6-20.

### Defining a Set Listener Class

Create a set listener class, deriving it from the abstract class `IPropPostSetListener`, as shown in the following example. (The name of the class includes the word `Post` because the toolbox notifies listeners after it updates the property value stored in the container.)

In this example, the constructor accepts a handle to an `IAdaptor` object. Because the toolbox establishes listeners on a per-instance basis, passing this handle can be helpful, but it is not a requirement.

The `IPropPostSetListener` class defines one virtual function: the `notify()` member function. In this function, you define how your adaptor responds when a user changes the value of a property. For more information, see “Creating the `notify()` Function for Your Class” on page 6-18.

```
#include "mwadaptorimaq.h"
#include "MyDeviceImaq.h" // For this example

class MyDevicePropSetListener : public IPropPostSetListener
{
public:

    // Constructor/Destructor
    MyDevicePropSetListener(MyDeviceAdaptor* parent):
        _parent(parent) {}

    virtual ~MyDevicePropSetListener() {};

    virtual void notify(imaqkit::IEnginePropInfo* propertyInfo,
        void* newValue);

private:

    // Declare handle to parent as member data
    MyDeviceAdaptor* _parent;

    // Property Information object.
    imaqkit::IPropInfo* _propInfo;

    // The new value for integer properties.
    int _lastIntValue;

    // The new value for double properties.
    double _lastDoubleValue;

    // The new value for string properties.
```

```
char* _lastStrValue;  
  
};
```

### Creating the notify() Function for Your Class

When a user calls the set command to change the value of a property, the engine calls the notify() function of the set listener class associated with the property.

A set listener class notify() function must accept two parameters:

```
void notify(IPropInfo* propertyInfo, void* newValue)
```

- `propertyInfo` is a handle to an `IPropInfo` object—The `IPropInfo` class is the interface that lets you get information about the property. For example, using `IPropInfo` functions you can get the property name, its storage type, and its default value.
- `newValue` is a pointer to the new property value—This engine passes this value as a `void*`. Your `notify()` function must cast the value to the appropriate C++ data type. The following table tells which C++ data type to cast to for all property types supported by the adaptor kit.

<b>imaqkit::PropertyTypes</b>	<b>C++ Data Type</b>
STRING	char*
DOUBLE	double*
INT	int*
DOUBLE_ARRAY	imaqkit::PropertyTypes::NDoubles*
INT_ARRAY	imaqkit::PropertyTypes::NInts*



**Suggested Algorithm for notify() Function.** The design of the notify() function varies with the needs of your device and the facilities offered by its SDK. For example, you can create one set listener class that handles all value changes for all properties in a particular property container (general or device-specific). In this case, the notify() function includes a switch statement with cases that handle each individual property.

Alternatively, you could define a separate set listener class for each property or each property storage type. Then, the engine calls the specific listener for the property specified.

You also can define set listener classes that fit the way the SDK organizes property configuration. For example, if an SDK provides one function to configure all device properties, you can define a set listener class for these properties.

**Example.** This example shows an implementation of a notify() function for integer types:

```
void MyDevicePropSetListener::notify(IPropInfo* propertyInfo,
                                     void* newValue)
{
    // Get property name from the IPropInfo object.
    const char* propName = propertyInfo->getPropertyName();

    // Cast newValue to the proper type
    newVal = *reinterpret_cast<const int*>(newValue);

    // *****
    // Insert calls to device SDK to apply value to hardware.
    // *****

    // For debug purposes only.
    imaqkit::adaptorWarn("In listener. Property name is %s\n",propName);
}
```

### Associating Set Listeners with Properties

To set up a listener for a property, you associate the listener object with the property in the property container. The following example shows how to add set listeners for all the device-specific properties in the adaptor property container. Adaptor writers typically set up property listeners in their adaptor class constructor—see “Implementing Your Adaptor Class Constructor” on page 4-14.

- 1 Get a handle to the appropriate property container object.

The `IEngine` object has two member functions that return handles to property containers (`IPropContainer` objects). The example calls the `IEngine` class `getAdaptorPropContainer()` member function to get the device-specific property container:

```
imaqkit::IPropContainer* adaptorPropContainer =  
    getEngine()->getAdaptorPropContainer();
```

- 2 Add a set listener to a property in the container, using the `IPropContainer` object's `addListener()` function. As arguments, specify the property name and a handle to the listener object.

---

**Note** Because the toolbox deletes each instance of a listener object when a user deletes the video input object, associate a new instance of a listener object with each property.

---

The following example iterates through all properties in the adaptor property container, associating a set listener object with each property:

```
void MyDeviceAdaptor::MyDeviceAdaptor()  
{  
    // get a handle to the property container  
    IPropContainer* propContainer =  
        getEngine()->getAdaptorPropContainer();  
  
    // Determine the number of properties in the container.  
    int numDeviceProps = propContainer->getNumberProps();
```

```
// Retrieve the names of all the properties in the container
const char **devicePropNames = new const
    char*[numDeviceProps];
propContainer->getPropNames(devicePropNames);

// Create a variable to point to a property listener object.
MyDevicePropSetListener* setListener;

// For each property in the container...
for (int i = 0; i < numDeviceProps; i++){

    // Create a set listener object...
    setListener = new MyDevicePropSetListener(this);

    // and associate it with a specific property.
    propContainer->addListener(devicePropNames[i], setListener);
}

// clean up the array of property names.

delete [] devicePropNames;

}
```



# Storing Adaptor Information in an IMDF File

---

This chapter describes how to store information about adaptor properties in an Image Device File (IMDF) in an XML based format.

- “Using the IMDF Markup Language” on page 7-2
- “Creating an IMDF File: Toplevel Elements” on page 7-4
- “Specifying Help in an IMDF File” on page 7-6
- “Specifying Device Information” on page 7-12
- “Specifying Property Information” on page 7-15
- “Specifying Format Information” on page 7-19
- “Specifying Hardware Trigger Information” on page 7-21
- “Specifying Video Sources” on page 7-24
- “Defining and Including Sections” on page 7-25

# Using the IMDF Markup Language

This chapter describes how to use an XML-based markup language to specify source, property, and hardware trigger information in an Imaging Device File (IMDF).

---

**Note** Creating an IMDF is required. Using an IMDF file can simplify the coding of your adaptor's `getDeviceAttributes()` function. In addition, it is the only convenient way to make help text available for the device-specific properties your adaptor creates.

---

## User Scenario

When a user calls the `imaqhwinfo` function, the toolbox searches for adaptor DLLs. When it finds a DLL, it also looks for a matching IMDF file in the same directories. If found, the engine stores path information to the IMDF file. An IMDF file must reside in the same directory as your DLL and the `.imdf` file extension, such as `demoimaq.imdf`.

When a user calls the `videoinput` function to create a video input object, the engine reads and processes the IMDF file. When it reads the file, it processes the property, trigger, and source information specified at the top-level of the file. (To understand the hierarchical arrangement of an IMDF file, see “Elements of the IMDF Markup Language” on page 7-2.)

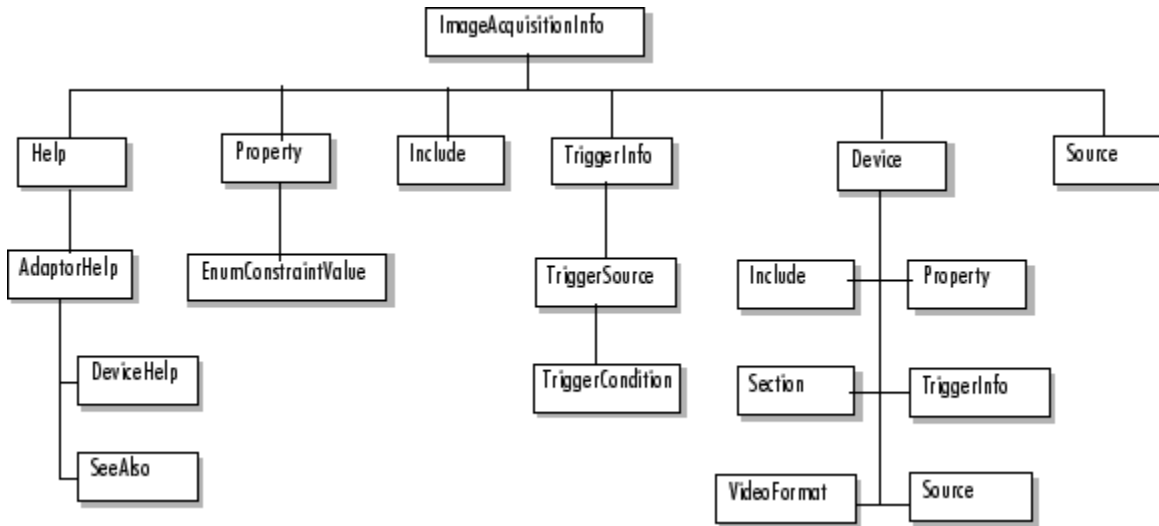
After reading all the top-level elements, the engine looks for a device element that matches the device the user specified in the `videoinput` function. If found, the engine then looks for video format element in the device element.

The engine then calls your adaptor's `getDeviceAttributes()` function, as described in “Implementing Get and Set Support for Device-Specific Properties” on page 6-11, to set up device properties.

## Elements of the IMDF Markup Language

The following figure shows the hierarchical relationship of the elements of the XML-based markup language for IMDF files. The figure shows which elements can be children of other elements. Elements at the top-level of an

IMDF file (elements that are children of the `ImageAcquisitionInfo` element apply to an entire adaptor. Elements that are children of a `Device` element apply only to that device. To simplify the diagram, all possible subordinate elements are not always shown for elements below the top-level. When used in an IMDF file, elements are called *nodes*.



**Hierarchy of IMDF Elements**

## Creating an IMDF File: Toplevel Elements

The `ImageAcquisitionInfo` element must be the root node of all IMDF files. Your IMDF file must begin with the `ImageAcquisitionInfo` node and end with the corresponding `ImageAcquisitionInfo` terminator, as in this example.

```
<ImageAcquisitionInfo>
.
.
.
</ImageAcquisitionInfo>
```

The following table lists the toplevel IMDF elements that you can specify as children of the `ImageAcquisitionInfo` element. The table lists the elements in the order they must appear in an IMDF file. Note that element tag names are case-sensitive.

Element	Description
<code>&lt;Help&gt;</code>	Defines the section of an IMDF file in which you specify help text for device-specific properties — see “Specifying Help in an IMDF File” on page 7-6. This is an optional element. If specified, an IMDF file can contain only one <code>Help</code> element.
<code>&lt;Property&gt;</code>	Defines properties of a device — see “Specifying Property Information” on page 7-15. This is an optional element. An IMDF file can contain multiple <code>Property</code> elements.
<code>&lt;Include&gt;</code>	Convenient way to specify another element or group of elements as children of another element — see “Defining and Including Sections” on page 7-25. This is an optional element. An IMDF file can contain multiple <code>Include</code> elements.
<code>&lt;Source&gt;</code>	Defines the source of video data — see “Specifying Video Sources” on page 7-24. This is an optional element. An IMDF file can contain multiple <code>Source</code> elements.



Element	Description
<TriggerInfo>	Defines hardware trigger information — see “Specifying Hardware Trigger Information” on page 7-21. This is an optional element. An IMDF file can contain only one TriggerInfo element.
<Device>	Specifies information about a device — see “Specifying Device Information” on page 7-12. This is an optional element. An IMDF file can contain multiple Device elements.

## Specifying Help in an IMDF File

To define help text for adaptor properties in an IMDF file, use the `Help` element. You can include only one `Help` node in an IMDF file and it must be a child of the root node.

As children of the `Help` node, you create `AdaptorHelp` nodes that contain the help text for a particular property. You use the `name` attribute of the `AdaptorHelp` element to specify which property the help is associated with.

You can optionally include device-specific content in the help text. This text appears only when a particular device is selected. Use one or more `DeviceHelp` nodes to add device-specific help to an `AdaptorHelp` node. You use the `device` attribute of the `DeviceHelp` element to specify when the text should appear. You can also create see also references for your property help using `SeeAlso` nodes.

The following example outlines how to use these elements to create property help. The words in italics represent text that you must define.

```
<ImageAcquisitionInfo>
  <Help>
    <AdaptorHelp property=propertyname>
      Help text
      <DeviceHelp device=devicename>
        Device-specific help text
      </DeviceHelp>
      <SeeAlso>
        References to other properties
      </SeeAlso>
    </AdaptorHelp>
  .
  .
  .
</Help>
</ImageAcquisitionInfo>
```

The following table summarizes the tags you can use to define help. For more information, see these topics.

- “User Scenario: Viewing Property Help” on page 7-7
- “Creating AdaptorHelp Nodes” on page 7-9

Element	Description	Attributes
<Help>	Defines the help section in an IMDF file. Must be child of the ImageAcquisitionInfo node.	None
<AdaptorHelp>	Defines the online help for a property. The Help node can contain one or more AdaptorHelp nodes.	property= <i>name</i> , where <i>name</i> is a text string specifying the property name
<DeviceHelp>	Specifies device-specific text in property help. This element is optional. An AdaptorHelp node can contain multiple DeviceHelp nodes.	device= <i>name</i> , where <i>name</i> is a text string that identifies a particular device
<SeeAlso>	Defines the see also line in property help. This element is optional. An AdaptorHelp node can contain multiple SeeAlso nodes.	None

## User Scenario: Viewing Property Help

The purpose of using a Help element in an IMDF file is to create help text for device-specific properties. A user of your adaptor can display the help text at the command line using the `imaqhelp` command.

The following example shows how a user displays the help text for a device-specific property using the `imaqhelp` command. To see how to create this help in an IMDF file, see “Creating AdaptorHelp Nodes” on page 7-9.

```
vid = videoinput('winvideo',1);
① src = getselectedsource(vid);
   get(src)
②   General Settings:
       Parent = [1x1 videoinput]
       Selected = on
       SourceName = input1
       Tag =
       Type = videosource

       Device Specific Properties:
       Brightness = -10
       Contrast = 266
       Exposure = 1024
       ExposureMode = auto
       Hue = 0
       Saturation = 340
       Sharpness = 40

③   imaqhelp(src,'brightness')
④   BRIGHTNESS [-128 128] (Read-only: whileRunning)

⑤   Specify the brightness, also called the black level.

       Brightness describes the difference in intensity of light reflected from or
       transmitted through an image independent of its hue and saturation.

       For some devices, the value is expressed in IRE units * 100. For other
       devices, the units are arbitrary. Refer to the device's documentation for
       information.

       Depending on the acquisition device, this property may have an associated
       mode property allowing this value to be controlled automatically by the device,
       or for it to be manually configured.

⑥   See also BrightnessMode.
```

The items in this list correspond to the numbered elements above.

- 1** Device-specific properties are properties of the video source object. The example creates the video input object and then uses the `getselectedsource` function to get a handle to the video source object.
- 2** The example uses the `get` function to display a list of device-specific properties.
- 3** Use the `imaqhelp` function to display help for one of the properties of the video source object.
- 4** The first line of the help lists the name of the property with its constraints, such as range and permission.
- 5** The text of the help appears exactly as you enter it in the IMDF file. You include the text after the `AdaptorHelp` tag.
- 6** The **See Also** line is created by the `SeeAlso` node.

## Creating AdaptorHelp Nodes

This section describes how to create help text for a property using the set of help tags defined by the IMDF DTD. The following example shows the IMDF entry for the `Brightness` property, displayed in “User Scenario: Viewing Property Help” on page 7-7. The example sets the property attribute of the `AdaptorHelp` tag to the name of a property.

---

**Note** Help text must start with a one-line summary. Make sure that each line of text is no longer than 80 characters.

---

```
<AdaptorHelp property="Brightness">  
Specify the brightness, also called the black level.
```

```
Brightness describes the difference in intensity of light reflected from  
or transmitted through an image independent of its hue and saturation.  
For some devices, the value is expressed in IRE units * 100. For other  
devices, the units are arbitrary. Refer to the device's documentation for  
information.
```

```
Depending on the acquisition device, this property may have an associated
```

mode property allowing this value to be controlled automatically by the device, or for it to be manually configured.

```
<SeeAlso>BrightnessMode.</SeeAlso>
```

```
</AdaptorHelp>
```

### Including Device-Specific Help Text

To include help text that only appears for specific devices, use `DeviceHelp` elements.

In this example, the help text contains three device-specific sections. Note how the example sets the `device` attribute of the `DeviceHelp` property to the name of a device.

```
<AdaptorHelp property="StrobeEnable">
Enables the strobe output and its timer.
```

Upon enabling the strobe output, it will start detection of triggers and generate output as appropriate. Consult your hardware manual for a detailed description of the strobe output.

```
<DeviceHelp device="PC2Vision">See also StrobeMode,
StrobeDuration, StrobeDelay, StrobePolarity,
StrobeAlignOnHs.
</DeviceHelp>
```

```
<DeviceHelp device="PCVisionPlus">See also StrobeMode,
StrobeDelay, StrobePolarity.
</DeviceHelp>
```

```
<DeviceHelp device="PCRGB">For the PC-RGB, StrobeEnable only
enables the timing circuitry. The strobe output must still be
enabled with the StrobeOutputEnable property.
```

```
See also StrobeMode, StrobePolarity, StrobeDelay,
StrobeOutputEnable.
</DeviceHelp>
```

`</AdaptorHelp>`

## Specifying Device Information

To specify information about a particular device in an IMDF file, use the `Device` element. You can include as many `Device` nodes in an IMDF file as you want but they must all be children of the root node.

In a `Device` node, you specify the name of the device as an attribute. The name is typically a text string defined by the device's SDK. Using other IMDF elements as children of the `Device` node, you can specify information about device-specific properties, video formats, and trigger information.

The following example outlines how to use these elements to create `Device` nodes. The words in italics represent text you define.

```
<ImageAcquisitionInfo>
  <Device device=devicename>
    <VideoFormat name=formatname>
      </VideoFormat>

    <Property constraint=constraint_value
      deviceSpecific=true_or_false
      name=property_name
      readOnly=always_never_or_whileRunning
      type=cell_double_int_or_string
      min=minimum_value
      max=maximum_value
      optional=on_or_off
      default=default_value>
      </Property>

    <TriggerInfo>
      <TriggerSource id=ID name=string>
        <TriggerCondition id=ID name=string/>
      </TriggerSource>
    </TriggerInfo>
  </Device>
  .
  .
  .
</ImageAcquisitionInfo>
```



The following table summarizes the elements that can be children of a Device node, in the order they must be specified. For an example, see “Example: Device Node” on page 7-13.

Element	Description	Attributes
<VideoFormat>	Specifies information about a video format. This is an optional element. A Device node can contain multiple VideoFormat nodes.	<i>name=formatname</i> , where <i>formatname</i> is a text string that identifies a particular device
<Include>	Include a Section node in another node. This is an optional element. A Device node can contain multiple Include nodes.	<i>tag=sectionname</i> , where <i>sectionname</i> is a text string that identifies a particular Section node
<Section>	Groups a set of nodes into a Section node. This is an optional element. A Device node can contain multiple Section nodes.	<i>name=sectionname</i> , where <i>sectionname</i> is the name you want to assign to the group of nodes
<Property>	Describes the properties of a device. This is an optional element. A Device node can contain multiple Property nodes.	See “Specifying Property Information” on page 7-15.
<Source>	Defines the source of video data. This is an optional element.	See “Specifying Video Sources” on page 7-24
<TriggerInfo>	Provides information about hardware triggers, such as source and condition. This is an optional element.  Note: A Device node can contain only one TriggerInfo node.	See “Specifying Hardware Trigger Information” on page 7-21.

## Example: Device Node

The following example creates a Device node containing property and trigger information. For more information about the Property element, see

“Specifying Property Information” on page 7-15. For more information about the `TriggerInfo` element, see “Specifying Hardware Trigger Information” on page 7-21.

```
<Device name="PCVision">
  <Property optional="on"
    constraint="enum"
    deviceSpecific="true"
    name="SyncSource"
    readOnly="whileRunning"
    type="string">
    <EnumConstraintValue id="1" name="strippedSync" />
    <EnumConstraintValue id="2" name="separateSync" />
    <EnumConstraintValue id="3" name="compositeSync" />
    <EnumConstraintValue id="4" name="variableScan" />
  </Property>

  <Property optional="on"
    constraint="enum"
    deviceSpecific="true"
    name="FieldStart"
    readOnly="whileRunning"
    type="string">
    <EnumConstraintValue id="0" name="evenField" />
    <EnumConstraintValue id="1" name="oddField" />
  </Property>

  <TriggerInfo>
    <TriggerSource id="1" name="extTrig">
      <TriggerCondition id="0" name="risingEdge"/>
      <TriggerCondition id="1" name="fallingEdge"/>
    </TriggerSource>
  </TriggerInfo>
</Device>
```

## Specifying Property Information

To specify property information in an IMDF file, use the `Property` element. You can include as many `Property` nodes in an IMDF file as you want. `Property` nodes can be children of the root node, a `Device` node, or a `VideoFormat` node. `Property` nodes can also be children of `Section` nodes.

---

**Note** `Property` nodes that are children of the root node affect all devices accessed through the adaptor. `Property` nodes that are children of a `Device` or `VideoFormat` node affect only that device or video format.

---

You use attributes of the `Property` element to specify characteristics of the property, such as its name, type, and constraints. For more information about `Property` attributes, see “Specifying Property Element Attributes” on page 7-16.

The following example outlines how to use these elements to specify property information. The example shows the `Property` node as a child of the root node but you use it the same way as a child of a `Device` or `VideoFormat` node. The words in italics represent text you define.

```
<ImageAcquisitionInfo>
  <Property constraint=constraint_value
    deviceSpecific=true_or_false
    name=property_name
    readOnly=always_never_or_whileRunning
    type=cell_double_int_or_string
    min=minimum_value
    max=maximum_value
    optional=on_or_off
    default=default_value>
  </Property>
  .
  .
  .
</ImageAcquisitionInfo>
```

## Specifying Property Element Attributes

The following table lists the attributes of a Property node in alphabetical order. The table gives a brief description of the property and lists which properties are required and which are optional.

Attribute	Description	Required
constraint	Specifies the constraints on the property — see “Specifying Values for the Constraint Attribute” on page 7-16.	Required
default	Default value for the property.	Optional
deviceSpecific	Boolean value. True if property is vendor-specific; otherwise false.	Required
min	Minimum allowable value	Optional
max	Maximum allowable value	Optional
name	Name of property	Required
optional	If set to off, the property is created automatically and added to the object when the IMDF file is processed. If on, the adaptor must explicitly create the property. The default is off.	Optional
readOnly	Read-only status of property: always, never, or whileRunning.	Required
type	Data type of the property: cell, double, int or string.	Required

## Specifying Values for the Constraint Attribute

Constraints specify information about what are valid values for a property. For example, to specify that a property only accepts positive values, use the positive constraint value, as follows:

```
constraint=positive
```

The following table lists all the possible values for the `constraint` attribute in alphabetical order.

<b>Constraint Value</b>	<b>Description</b>
<code>bounded</code>	Property has both a minimum and maximum value. If you set the <code>constraint</code> attribute to <code>bounded</code> , you must assign values to the <code>min</code> and <code>max</code> attributes.
<code>enum</code>	Property is an enumerated value. If set, the <code>Property</code> node must contain one or more <code>EnumConstraintValue</code> nodes. See “Specifying Enumerated Values” on page 7-17.
<code>inforpositive</code>	Value must be positive or infinite
<code>none</code>	No constraints
<code>positive</code>	Value must be positive
<code>zeroinforpositive</code>	Value must be greater than zero or infinite
<code>zeroorpositive</code>	Value must be greater than zero

## Specifying Enumerated Values

If your property uses enumerated values, you must set the value of the `constraint` attribute to `enum`, the `type` attribute to `string`, and create `EnumConstraintValue` elements for each enumeration. The `EnumConstraintValue` nodes are children of the `Property` node.

When you create the `EnumConstraintValue` nodes, you specify two attributes:

- Value ID
- Value name

This example defines the property `StrobeEnable`. The `constraint` attribute is set to `enum`. The `name` attribute of the `EnumConstraintValue` nodes defines the possible values of this enumeration: `on` and `off`.

```
<Property optional="on"
           constraint="enum"
```

```
        deviceSpecific="true"  
        name="StrobeEnable"  
        readOnly="whileRunning"  
        type="string">  
    <EnumConstraintValue id="0" name="off" />  
    <EnumConstraintValue id="1" name="on" />  
</Property>
```

## Specifying Format Information

To specify the video formats supported by a particular device in an IMDF file, use the `VideoFormat` element. `VideoFormat` nodes must be children of `Device` nodes. In the `VideoFormat` node, you specify the name of the format as the value of an attribute of the element.

You can also specify format-specific property and trigger information, if necessary. A `VideoFormat` node can have `Property` and `TriggerInfo` nodes as children. (`VideoFormat` nodes can also have a `Section` node as a child — see “Defining and Including Sections” on page 7-25.)

The following example outlines how to use the `VideoFormat` node. The words in italics represent text that you define.

```
<ImageAcquisitionInfo>
  <Device device=devicename>
    <VideoFormat name=formatname>
      <Property constraint=constraint_value
        deviceSpecific=true_or_false
        name=property_name
        readOnly=always_never_or_whileRunning
        type=cell_double_int_or_string
        min=minimum_value
        max=maximum_value
        optional=on_or_off
        default=default_value>
      </Property>

      <TriggerInfo>
      </TriggerInfo>
    </VideoFormat>
  </Device>
  .
  .
  .
</ImageAcquisitionInfo>
```

The following table lists the tags used to specify video format information.

<b>Element</b>	<b>Description</b>	<b>Attributes</b>
<Include>	Include one or more nodes grouped into a Section node. This is an optional element. A VideoFormat node can contain multiple Include nodes.	<i>tag=sectionname</i> , where <i>sectionname</i> is a text string that identifies a particular Section node
<Section>	Groups one or more nodes into a Section node. This is an optional element. A VideoFormat node can contain multiple Section nodes.	<i>name=sectionname</i> , where <i>sectionname</i> is the name you want to assign to a particular Section node
<Property>	Describes the properties of a video format. This is an optional element. A VideoFormat node can contain multiple Property nodes.	See “Specifying Property Information” on page 7-15.
<Source>	Defines the source of video data. This is an optional element.	See “Specifying Video Sources” on page 7-24
<TriggerInfo>	Trigger information specific to a particular video format. This is an optional element. A VideoFormat node can only contain one TriggerInfo node.	See “Specifying Hardware Trigger Information” on page 7-21.



## Specifying Hardware Trigger Information

To specify hardware trigger information in an IMDF file, use the `TriggerInfo` node. A `TriggerInfo` node can be the child of the `ImageAcquisitionInfo`, `Device`, `VideoFormat`, and `Section` nodes.

You specify the source of the hardware trigger in a `TriggerSource` node that is the child of the `TriggerInfo` node. You specify the conditions under which trigger fires in one or more `TriggerCondition` nodes, which are children of the `TriggerSource` node.

The following example outlines how to use these elements to specify trigger information. The words in *italics* represent text you define.

```
<ImageAcquisitionInfo>
  <Device device=devicename>

    <TriggerInfo>
      <TriggerSource id=ID name=triggername>
        <TriggerCondition id=ID name=conditionname>
      </TriggerInfo>

    </Device>
  .
  .
  .
</ImageAcquisitionInfo>
```

The following table lists the elements used to specify hardware trigger information.

<b>Element</b>	<b>Description</b>	<b>Attributes</b>
<TriggerInfo>	Defines information about a hardware trigger.	None
<TriggerSource>	Defines the source of the hardware trigger. A TriggerInfo node must contain or more TriggerSource nodes.	See “Specifying Trigger Sources” on page 7-22.
<TriggerCondition>	Defines a condition that must be met before a hardware trigger fires. A TriggerSource node can contain zero or more TriggerCondition nodes.	See “Specifying Trigger Conditions” on page 7-22.

## Specifying Trigger Sources

When you define a hardware trigger, you must define the source (or sources) of the hardware trigger in one or more `TriggerSource` nodes. In a `TriggerSource` node, you specify values for two attributes: `name` and `id`. The value of the `name` attribute is visible to users of the toolbox in the display returned by the toolbox `triggerinfo` function. It is typically set to some value that is recognized by the device’s SDK.

```
<TriggerSource id="1" name="extTrig">  
</TriggerSource>
```

## Specifying Trigger Conditions

When you define a hardware trigger, you must define the conditions that must be met before the trigger fires. The parent `TriggerSource` node specifies the trigger. In a `TriggerCondition` node, you specify values for two attributes: `name` and `id`. The value of the `name` attribute is visible to users of the toolbox in the display returned by the toolbox `triggerinfo` function. It is typically set to some value that is recognized by the device’s SDK.

```
<TriggerCondition id="1" name="risingEdge">  
</TriggerCondition>
```

### Specifying Video Sources

To specify the video source in an IMDF file, use the `Source` element. A `Source` node can only be the child of the IMDF root element and it cannot have any child nodes of its own.

When you create a `Source` node, you must specify values for two attributes: `name` and `id`. In the `name` attribute, you specify the name of the source as it appears in the video source object's `Name` property. The `id` is typically set to some value that is recognized by the vendor's SDK. The `id` is only used by the adaptor and needs only to be unique between sources.

The following example outlines how to create a `Source` node. The words in italics represent text you define.

```
<ImageAcquisitionInfo>
  <Source id=ID name=sourcename>
  </Source>
  .
  .
  .
</ImageAcquisitionInfo>
```

## Defining and Including Sections

You can gather one or more `Property` or `TriggerInfo` nodes into a group by using the `Section` element. A `Section` node can contain one or more `Property` nodes or a single `TriggerInfo` node or another `Section` node. A `Section` node can be the child of a `Device`, or `VideoFormat` node. Using the `Include` element, a `Section` node can be indirectly be a child of the root node, `Device`, `VideoFormat`, `Section`, or `TriggerInfo` nodes.

`Section` nodes can simplify an XML file. You can reuse node definitions without repeating the XML statements. For example, you can define common elements, such as video formats, that can be shared by several `Device` nodes in the XML file.

The following example outlines how to create a `Section` node and use it in an IMDF file. The words in italics represent text you define.

```
<ImageAcquisitionInfo>
  <Device device=devicename1>
    <Section name=sectionname>
      <Property>
      </Property>

      <TriggerInfo>
      </TriggerInfo>
    </Section>
    <Property>
    </Property>
  </Device>
  <Device device=devicename2>
    <Include tag=sectionname/>
  </Device>
  .
  .
  .
</ImageAcquisitionInfo>
```



# Test Suite for Adaptor Writers

---

- “Testing Adaptors or Hardware” on page 8-2
- “Creating a Stub Adaptor Test Procedure” on page 8-3
- “Specifying Format of Image Data Test Procedure” on page 8-7
- “Implementing the Acquisition Thread Function Test Procedure” on page 8-8
- “Supporting ROIs Test Procedure” on page 8-9
- “Specifying Device Driver Identification Information Test Procedure” on page 8-10
- “Using the Test Suite Functions and Properties” on page 8-13

## Testing Adaptors or Hardware

As part of the Image Acquisition Toolbox Adaptor Kit, we now offer a test procedure and automated tests for third-party adaptor developers and camera vendors to test adaptors and hardware against the toolbox.

- Third-party adaptor writers can use this test suite to verify their adaptors.
- Camera vendors can use the automated tests to test their cameras against the Image Acquisition Toolbox.

This documentation provides test procedure examples to use to test adaptors and cameras. It also provides documentation of all the functions and properties included in this test class.

- “Creating a Stub Adaptor Test Procedure” on page 8-3
- “Specifying Format of Image Data Test Procedure” on page 8-7
- “Implementing the Acquisition Thread Function Test Procedure” on page 8-8
- “Supporting ROIs Test Procedure” on page 8-9
- “Specifying Device Driver Identification Information Test Procedure” on page 8-10
- “Using the Test Suite Functions and Properties” on page 8-13



## Creating a Stub Adaptor Test Procedure

As part of the Image Acquisition Toolbox Adaptor Kit, we now offer a test procedure and automated tests for third-party adaptor developers and camera vendors to test adaptors and hardware against the toolbox. This test procedure is part of that suite. For more information, see “Testing Adaptors or Hardware” on page 8-2.

After creating a stub adaptor per instructions in “Creating a Stub Adaptor” in this Adaptor Kit documentation, follow these steps to verify that the stub adaptor shows up in MATLAB.

Test Procedures	Expected Results
<p>In MATLAB, register the adaptor using the following command:</p> <pre>imaqregister('AdaptorDllName')</pre> <p>where 'AdaptorDllName' is the adaptor dll file name with the full path to the file.</p>	<p>The registration of the adaptor should work without any errors or warnings.</p> <p>Once verified, run the following command:</p> <pre>imaqreset</pre>
<p>Run the following command:</p> <pre>imaqhwinfo</pre>	<p>imaqhwinfo will output a list of available adaptors. The adaptor being built should be listed in InstalledAdaptors.</p>
<p>Run the following command:</p> <pre>imaqhwinfo('AdaptorName')</pre>	<p>The details of the adaptor library are shown. AdaptorDllName should be the full path to the adaptor library. At this point DeviceIDs and DeviceInfo should empty (1x0).</p>

Once the device enumeration code has been added, follow these steps to verify the device information.

Test Procedures	Expected Results
<p>Run the following command:</p> <pre>devInfo = imaqhwinfo ('AdaptorName')</pre>	<p>The DeviceIDs and DeviceInfo fields should now be populated. DeviceIDs should be from 1 to N based on the number of devices added. DeviceInfo is a MATLAB structure (or array of structures if there are multiple devices).</p>
<p>Run the following command:</p> <pre>devInfo(:).DeviceInfo</pre>	<p>DeviceInfo should show the information as follows for each device:</p> <pre>DefaultFormat: '640x480' DeviceFileSupported: 0 DeviceName: 'MyDevice' DeviceID: 1 ObjectConstructor: 'videoinput ('mydeviceimaq', 1)' SupportedFormats: {'640x480' '320x240'}</pre> <p>where,</p> <p>DefaultFormat is the format for which the second argument to addDeviceFormat is set to true.</p> <p>DeviceFileSupported is true (1) if the device supports device files.</p> <p>DeviceName is the name of the device as defined in createDeviceInfo.</p> <p>DeviceID is the ID associated with the device as defined in createDeviceInfo. This is usually 1.</p> <p>ObjectConstructor is how a videoinput object for that device is created in MATLAB.</p> <p>SupportedFormats is a cell array of all supported formats as defined</p>

Test Procedures	Expected Results
	using addDeviceFormat. It is empty if DeviceFileSupported is true and no formats were added by DeviceFormat.

After the adaptor class has been written, follow these steps to test the videoinput object creation and destruction.

Test Procedures	Expected Results
<p>Run the following command:</p> <pre>vidObj = videoinput ('AdaptorName')</pre>	<p>The videoinput object should get created using the first device found and the default format without any error and its details should be displayed at the MATLAB command prompt. This will not work if only device files are supported. The details should be similar to:</p> <pre>Summary of Video Input Object Using 'MyDevice'. Acquisition Source(s): MyDeviceSource is available. Acquisition Parameters: 'MyDeviceSource' is the current selected source. 10 frames per trigger using the selected source. '640x480' video data to be logged upon start. Grabbing first of every 1 frame(s). Log data to 'memory' on trigger. Trigger Parameters: 1 'immediate' trigger(s) on start. Status: Waiting for start. 0 frames acquired since starting. 0 frames available for getData.</pre>

Test Procedures	Expected Results
	<p>where MyDevice is the device connected.</p>
<p>Run the following commands:</p> <pre>delete(vidObj); vidObj</pre>	<p>The following message should get displayed:</p> <p>Invalid Image Acquisition object.</p> <p>This object is not associated with any hardware and should be removed from your workspace using <code>clear</code>.</p>
<p>Run the following commands:</p> <pre>vidObj = videoinput     ('AdaptorName'); imaqreset; vidObj</pre>	<p>The following message should get displayed:</p> <p>Invalid Image Acquisition object.</p> <p>This object is not associated with any hardware and should be removed from your workspace using <code>clear</code>.</p>

## Specifying Format of Image Data Test Procedure

As part of the Image Acquisition Toolbox Adaptor Kit, we now offer a test procedure and automated tests for third-party adaptor developers and camera vendors to test adaptors and hardware against the toolbox. This test procedure is part of that suite. For more information, see “Testing Adaptors or Hardware” on page 8-2.

After specifying the format of the image data per instructions in “Specifying the Format of the Image Data” in this Adaptor Kit documentation, follow these steps to test specifying the format of the image data.

Test Procedures	Expected Results
<p>Run the following commands:</p> <pre> vidObj = videoinput     ('AdaptorName'); vidObj.VideoResolution vidObj.VideoFormat  delete(vidObj); clear vidObj; </pre>	<p>The output should be the width and height (e.g. 640 480) of the frame to be acquired.</p> <p>The output should indicate the Video Format (e.g. MJPG_640x480).</p> <p>To clean up after this step, delete and clear the object:</p> <pre> delete(vidObj); clear vidObj; </pre>

## Implementing the Acquisition Thread Function Test Procedure

As part of the Image Acquisition Toolbox Adaptor Kit, we now offer a test procedure and automated tests for third-party adaptor developers and camera vendors to test adaptors and hardware against the toolbox. This test procedure is part of that suite. For more information, see “Testing Adaptors or Hardware” on page 8-2.

After implementing the acquisition thread function per instructions in “Implementing the Acquisition Thread Function” in this Adaptor Kit documentation, follow these steps to test the acquisition thread function.

Test Procedures	Expected Results
Run the following commands:  <pre>vidObj = videoinput     ('AdaptorName'); preview(vidObj)</pre>	A preview window should open and display the acquired video. Verify that the video is getting acquired as expected based on the <code>VideoFormat</code> and <code>VideoResolution</code> . To close the preview window, press the (x) button or type <code>closepreview</code> at the command prompt.  To clean up after this step, delete and clear the object.
Run the following command:  <pre>vidObj = videoinput     ('AdaptorName'); start(vidObj); wait(vidObj) vidObj.FramesAcquired</pre>	The commands should execute without any error or warning. <code>vidObj.FramesAcquired</code> will display the number of acquired frames, which should be 10 unless the startup or period between frames is lengthy.  To clean up after this step, delete and clear the object.

## Supporting ROIs Test Procedure

As part of the Image Acquisition Toolbox Adaptor Kit, we now offer a test procedure and automated tests for third-party adaptor developers and camera vendors to test adaptors and hardware against the toolbox. This test procedure is part of that suite. For more information, see “Testing Adaptors or Hardware” on page 8-2.

After implementing ROIs per instructions in “Supporting ROIs” in this Adaptor Kit documentation, follow these steps to test region of interest (ROI).

Test Procedures	Expected Results
<p>Run the following commands:</p> <pre>vidObj = videoinput     ('AdaptorName'); vidObj.ROIPosition =     [xoffset yoffset x y]; frame = getsnapshot(vidObj); size(frame); image(frame);</pre> <p>where</p> <p>xoffset: integer value that defines x offset  yoffset: integer value that defines y offset  x: new width  y: new height</p> <p>For example, if the original VideoResolution is [640 480], then define the new ROIPosition as follows:</p> <pre>vidObj.ROIPosition =     [100 100 320 240]</pre>	<p>The output of <code>size(frame)</code> should display the new ROI, for example [320 240]. The displayed image should exhibit part of the full image that is expected for an ROI of [100 100 320 240].</p> <p>To clean up after this step, delete and clear the object.</p>

## Specifying Device Driver Identification Information Test Procedure

As part of the Image Acquisition Toolbox Adaptor Kit, we now offer a test procedure and automated tests for third-party adaptor developers and camera vendors to test adaptors and hardware against the toolbox. This test procedure is part of that suite. For more information, see “Testing Adaptors or Hardware” on page 8-2.

After specifying device driver identification information per instructions in “Specifying Device Driver Identification Information” in this Adaptor Kit documentation, follow these steps to verify the device driver identification information.

Test Procedures	Expected Results
<p>Run the following command:</p> <pre data-bbox="394 826 673 916">vidObj = videoinput     ('AdaptorName'); imaqhwinfo(vid)</pre>	<p>The details of the device and device driver should be displayed. It will be similar to:</p> <pre data-bbox="847 892 1258 1142">AdaptorName: 'AdaptorName' DeviceName: 'MyDevice' MaxHeight: 280 MaxWidth: 120 TotalSources: 1 VendorDriverDescription:     'MyDevice_Driver' VendorDriverVersion: '1.0.0'</pre> <p>where 'MyDevice' is the name of the device and VendorDriverDescription and VendorDriverVersion are as defined in your adaptor class' getDriverDescription and getDriverVersion methods.</p> <p>To clean up after this step, delete and clear the object.</p>
<p>Run the following command:</p>	<p>The device-specific properties like Brightness, Exposure, etc. will be</p>



Test Procedures	Expected Results
<pre>vidObj = videoinput     ('AdaptorName'); src = getselectedsource(vid); get(src)</pre>	<p>displayed along with their values. It will be similar to:</p> <p>General Settings:</p> <p>Parent = [1x1 videoinput]                  Selected = on                  SourceName = input1                  Tag =                  Type = videosource</p> <p>Device-specific Properties:</p> <p>Brightness = -10                  Contrast = 266                  Exposure = 1024                  ExposureMode = auto                  Hue = 0                  Saturation = 340                  Sharpness = 40</p> <p>The actual property names will be based on the information provided by the adaptor.</p> <p>To clean up after this step, delete and clear the object.</p>
<p>Run the following command:</p> <pre>vidObj = videoinput     ('AdaptorName'); preview(vidObj); src = getselectedsource(vidObj) src.PropName = Value;</pre> <p>where PropertyName is the name of a property that has visible</p>	<p>The change in the property value should be observable in the video running in the preview window. Try different property values. For example, if there is a set of properties that have dependencies with each other, change one of them to make sure that it gets reflected in the dependent properties. To close the preview window, press the (x) button</p>

<b>Test Procedures</b>	<b>Expected Results</b>
effect on the acquired video (e.g., Brightness) and <code>newValue</code> is a value different from the existing value (e.g., specific integer values like 10 for Brightness).	or type <code>closepreview</code> at the command prompt.  To clean up after this step, delete and clear the object.

## Using the Test Suite Functions and Properties

### In this section...

“Test Suite Properties” on page 8-13

“Test Suite Functions” on page 8-14

“Test Suite Example” on page 8-19

### Test Suite Properties

The following properties can be used in the `imaqkit.AdaptorTest` functions.

Property	Description
<code>AdaptorName</code>	Name of the Image Acquisition Toolbox adaptor you are creating, as defined by the constructor.
<code>DeviceId</code>	Device ID of the device you are testing with, as defined by the constructor.
<code>Format</code>	Video format used for acquisition or camera file.
<code>DeviceName</code>	Device name of the device you are testing with, as defined by the constructor.
<code>VendorDriverDescription</code>	Device driver name.
<code>VendorDriverVersion</code>	Device driver version.

Property	Description
EstimatedAcquisitionFrameRate	Estimated frame rate.
ConciseLog	<p data-bbox="832 348 1326 439">Verbosity of log, with a default of <code>false</code>. Set to <code>true</code> if you want a concise log output.</p> <p data-bbox="832 461 1297 522">In concise mode, only the following is shown in the log output:</p> <ul data-bbox="832 557 1089 630" style="list-style-type: none"> <li>• current test name</li> <li>• test results</li> </ul> <p data-bbox="832 670 1304 765">With concise mode set to <code>false</code> (the default), the following is shown in the log output:</p> <ul data-bbox="832 800 1326 1046" style="list-style-type: none"> <li>• current test name</li> <li>• current test details/information</li> <li>• any applicable information on how to interpret the results</li> <li>• test condition under test</li> <li>• test results</li> </ul>

## Test Suite Functions

You can use these functions with the `imaqkit.AdaptorTest` class.

The `imaqkit.AdaptorTest` class is used to create an Image Acquisition Toolbox Adaptor Test object and to test Image Acquisition Toolbox connectivity with cameras/framegrabbers. This class is not instantiated directly. Call `imaqkit.AdaptorTest.createTest` to instantiate.

Function	Purpose
createTest	<p>Create <code>imaqkit.AdaptorTest</code> object.</p> <p>For an <code>imaqkit.AdaptorTest</code> object called <code>testObj</code>, use this syntax:</p> <pre>testObj = imaqkit.AdaptorTest.createTest (AdaptorName, DeviceId, Format, EstimatedAcquisitionFrameRate)</pre> <p>returns a test object to test a device with specified adaptor, ID and format. <code>AdaptorName</code> is the name of the adaptor to use to communicate with the device, e.g. <code>winvideo</code>, <code>gige</code>, etc. <code>DeviceId</code> is the numeric ID of the device, and is often 1. <code>Format</code> is the video format to acquire images in. To see more about <code>DeviceId</code> and available formats, use <code>imaqhwinfo</code>.</p> <p>See the example in the next section for an example of using the <code>createTest</code> function.</p>
runAllAutomatedTests	<p>For automated testing, run all automated tests. This runs all test points.</p> <p>For an <code>imaqkit.AdaptorTest</code> object called <code>testObj</code>, use this syntax:</p> <pre>testObj.runAllAutomatedTests</pre>
runAutomatedObjectCreationAndPreviewTest	<p>For automated testing, run automated object creation and preview test. This test creates an object with the specified parameters and then previews it. It also checks that the preview can be stopped and then closed.</p> <p>For an <code>imaqkit.AdaptorTest</code> object called <code>testObj</code>, use this syntax:</p> <pre>testObj.runAutomatedObjectCreationAndPreviewTest</pre>

Function	Purpose
<p>runAutomatedBasicAcquisitionTest</p>	<p>For automated testing, run automated acquisition test. This test acquires and montages 10 frames. It also checks that continuous image acquisition can be stopped.</p> <p>For an <code>imaqkit.AdaptorTest</code> object called <code>testObj</code>, use this syntax:</p> <pre>testObj.runAutomatedBasicAcquisitionTest</pre>
<p>runAutomatedROITest</p>	<p>For automated testing, run automated region of interest test. The test sweeps the ROI during preview. It divides the frame into four sections and previews each section separately. This test checks setting the Region of Interest to a value different from the default value and then acquiring data. It also checks setting ROI values using X and Y offsets.</p> <p>For an <code>imaqkit.AdaptorTest</code> object called <code>testObj</code>, use this syntax:</p> <pre>testObj.runAutomatedROITest</pre>
<p>runAutomatedRepeatedAcquisitionTest</p>	<p>For automated testing, run automated repeated acquisition test. This test does 25 acquisitions from the same device.</p> <p>For an <code>imaqkit.AdaptorTest</code> object called <code>testObj</code>, use this syntax:</p> <pre>testObj.runAutomatedRepeatedAcquisitionTest</pre>

Function	Purpose
<p><code>runAutomatedImmediateTriggerTest</code></p>	<p>For automated testing, run automated trigger test for immediate triggering. This test checks acquiring images in Immediate trigger mode. It checks the number of acquired frames for acquisition with immediate trigger.</p> <p>For an <code>imaqkit.AdaptorTest</code> object called <code>testObj</code>, use this syntax:</p> <pre>testObj.runAutomatedImmediateTriggerTest</pre>
<p><code>runAutomatedManualTriggerTest</code></p>	<p>For automated testing, run automated trigger test for manual triggering. This test checks acquiring images in Manual trigger mode. It checks that frames are not acquired when the <code>imaqkit.AdaptorTest</code> object is waiting for a trigger, as well as number of acquired frames (once triggered).</p> <p>For an <code>imaqkit.AdaptorTest</code> object called <code>testObj</code>, use this syntax:</p> <pre>testObj.runAutomatedManualTriggerTest</pre>
<p><code>runAutomatedHardwareTriggerTest</code></p>	<p>For automated testing, run automated trigger test for hardware triggering. This test checks the <code>imaqkit.AdaptorTest</code> object in hardware trigger mode. It checks that frames are not acquired when the object is waiting for a trigger. To test triggering using hardware trigger, refer to Image Acquisition Toolbox documentation.</p> <p>For an <code>imaqkit.AdaptorTest</code> object called <code>testObj</code>, use this syntax:</p> <pre>testObj.runAutomatedHardwareTriggerTest</pre>

Function	Purpose
<p>runInteractiveDevicePropertiesTest</p>	<p>For interactive testing, run interactive device properties test. This tests device-specific property values in the Property Inspector. This test checks device properties interactively. by opening a preview window and the property inspector. You can modify the properties from the property inspector and observe the changes in the preview window.</p> <p>For an <code>imaqkit.AdaptorTest</code> object called <code>testObj</code>, use this syntax:</p> <pre>testObj.runInteractiveDevicePropertiesTest</pre>
<p>runInteractiveMultipleDeviceAcquisitionTest</p>	<p>For interactive testing, run interactive multiple device acquisition test. This test checks simultaneous acquisition from two devices. Before running this test, at least two devices should be connected and their Device ID and Format information obtained using <code>imaqhwinfo</code>.</p> <p>For an <code>imaqkit.AdaptorTest</code> object called <code>testObj</code>, use this syntax:</p> <pre>testObj.runInteractiveMultipleDeviceAcquisitionTest(testObj, deviceId1, deviceFormat1, deviceId2, deviceFormat2)</pre>
<p>methods</p>	<p>Get the list of tests that can be run.</p> <p>For an <code>imaqkit.AdaptorTest</code> object called <code>testObj</code>, use this syntax:</p> <pre>methods(testObj)</pre>



## Test Suite Example

This example shows the basic workflow of creating and running a test using some of the functions outlined in the previous section.

Get installed hardware information recognizable using the `winvideo` adaptor.

```
info = imaqhwinfo('winvideo');
```

Identify the Device IDs.

```
info.DeviceIDs
```

Get information about available formats for the camera under test identified in the last step. If it is the first camera, use `DeviceId` of 1.

```
info.DeviceInfo(1).SupportedFormats
```

Choose a format, for example `MJPEG_800x600`, and create the test object, with an estimated frame rate of 15.

```
testObj = imaqkit.AdaptorTest.createTest('winvideo', 1, 'MJPEG_800x600', 15);
```

By default, tests create verbose logs. To run tests with concise logs set the `ConciseLog` property to `true` and then run tests.

```
testObj.ConciseLog = true;
```

To run individual tests, call specific test functions, such as:

```
testObj.runObjectCreationAndPreviewTest;  
testObj.runInteractiveDevicePropertiesTest;
```

Run all automated tests.

```
testObj.runAllAutomatedTests;
```



## A

- acquiring frames
  - determining when it is done 5-23
- acquisition thread
  - algorithm 5-20
- adaptor data
  - storing device-specific information 3-17
- adaptor property container 6-11
- adaptor writer test suite
  - creating a stub adaptor test procedure 8-3
  - example 8-19
  - functions 8-14
  - implementing the acquisition thread function
    - test procedure 8-8
  - overview 8-2
  - properties 8-13
  - specifying device driver identification
    - information test procedure 8-10
  - specifying the format of the image data test procedure 8-7
  - supporting ROIs test procedure 8-9
- AdaptorHelp elements
  - creating 7-9
- adaptors
  - defining device and format information 3-8
  - defining device attributes 6-2
  - registering 1-11
  - unloading DLL 3-19

## C

- camera vendor test suite
  - creating a stub adaptor test procedure 8-3
  - example 8-19
  - functions 8-14
  - implementing the acquisition thread function
    - test procedure 8-8
  - overview 8-2
  - properties 8-13

- specifying device driver identification
  - information test procedure 8-10
- specifying the format of the image data test procedure 8-7
- supporting ROIs test procedure 8-9

`closeDevice()` virtual function

- implementing 5-11

closing connection to device 5-11

constraint attribute

- specifying 7-16

## D

- data types
  - frame types 5-8
  - property types mapped to C++ data types 6-13 6-18
- demo adaptor
  - building 1-10
  - running 1-11
  - setting break points in 1-10
  - source files 1-7
  - viewing 1-7
- device drivers
  - specifying name and version 5-37
- Device element
  - example 7-13
  - overview 7-12
- device information
  - classes 3-8
  - specifying 3-11
  - storing in IMDF file 7-12
- devices
  - storing device-specific information 3-17

## E

- engine property container 6-11
- enumerated values
  - specifying in IMDF file 7-17

error messages  
  displaying 3-20

## F

formats  
  specifying video format in IMDF file 7-19  
frame count  
  incrementing in frame acquisition loop 5-24  
frame types  
  packed and planar 5-10

## G

get listeners  
  associating with a property 6-14  
  defining get listener class 6-12  
  setting up 6-11  
getAvailHW() function  
  implementing 3-8  
getDeviceAttributes() function  
  implementing 6-2  
getValue()  
  design considerations 6-14  
  implementing the get listener class  
    function 6-13

## H

hardware triggers  
  determining if configured 5-30  
  specifying in IMDF file 7-21  
header files  
  on Linux and Macintosh systems 2-19  
  on Windows systems 2-2  
Help element  
  overview 7-6  
help text  
  for properties 7-9  
  format guidelines 7-9

## I

IDeviceFormat class  
  creating 3-12  
  storing device format information 3-8  
IDeviceInfo class  
  storing device information 3-8  
IDeviceInfo objects  
  creating 3-11  
IHardwareInfo class  
  storing device and format information 3-8  
image frames  
  determining when to send to engine 5-23  
  frame types 5-8  
  sending to engine 5-24  
image resolution  
  specifying in adaptor class 5-6  
ImageAcquisitionInfo element  
  overview 7-4  
Imaging Device Files. *See* IMDF files  
imaqregister  
  using 1-11  
IMDF files  
  defining sections 7-25  
  including sections 7-25  
  toplevel elements 7-4  
include files  
  on Linux and Macintosh systems 2-19  
  on Windows systems 2-2  
IPropCustomGetFcn class  
  deriving from 6-12  
IPropPostSetListener class  
  deriving from 6-16

## L

libraries  
  on Linux and Macintosh systems 2-19  
listeners  
  *See property listeners* 6-11

**M**

makefile  
on Linux and Macintosh systems 2-20

**N**

notify()  
design considerations 6-19  
implementing the set listener class notify  
function 6-18

**P**

packed frame types 5-10  
planar frame types 5-10  
preferences  
registering an adaptor 1-11  
properties  
specifying attributes in IMDF file 7-16  
specifying constraints in IMDF file 7-16  
storing in IMDF file 7-15  
property containers  
two types 6-11  
property data types  
mapped to C++ data types 6-13 6-18  
Property element  
attributes 7-16  
overview 7-15  
specifying constraints in IMDF file 7-16  
property help text  
creating 7-9  
property listeners  
defining get listener class 6-12  
setting up 4-14  
setting up get listeners 6-11  
setting up listeners 6-11  
setting up set listeners 6-16

**R**

registering adaptors  
using imaqregister 1-11

**S**

set listeners  
associating with a property 6-20  
defining listener class 6-16  
implementing the notify function 6-18  
setting up 6-16  
Source element  
overview 7-24  
startCapture() virtual function  
implementing 5-11 5-16  
starting the acquisition of frames 5-11 5-16  
stopCapture() virtual function  
implementing 5-16  
stopping the acquisition of frames 5-16

**T**

test suite  
creating a stub adaptor test procedure 8-3  
example 8-19  
functions 8-14  
implementing the acquisition thread function  
test procedure 8-8  
overview 8-2  
properties 8-13  
specifying device driver identification  
information test procedure 8-10  
specifying the format of the image data test  
procedure 8-7  
supporting ROIs test procedure 8-9  
thread message loop  
algorithm 5-20  
timestamp  
logging with image data 5-23  
trigger conditions

- specifying in IMDF file 7-22
- trigger sources
  - specifying in IMDF file 7-22
- TriggerInfo element
  - overview 7-21

## **U**

- uninitializeAdaptor() function
  - implementing 3-19

## **V**

- video formats

- specifying in IMDF file 7-19
- video sources
  - specifying in IMDF file 7-24
- VideoFormat element
  - overview 7-19

## **W**

- warning messages
  - displaying 3-20